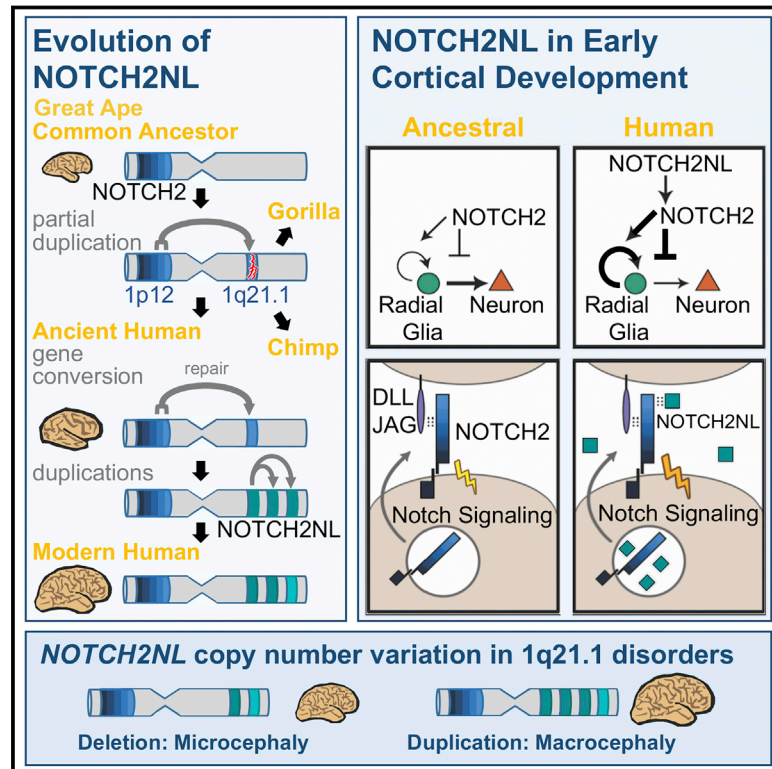


# Human-Specific *NOTCH2NL* Genes Affect Notch Signaling and Cortical Neurogenesis

## Graphical Abstract



## Authors

Ian T. Fiddes, Gerrald A. Lodewijk, Meghan Mooring, ..., Sofie R. Salama, Frank M.J. Jacobs, David Haussler

## Correspondence

F.M.J.Jacobs@uva.nl (F.M.J.J.), haussler@ucsc.edu (D.H.)

## In Brief

Human-specific Notch paralogs are expressed in radial glia, enhance Notch signaling, and impact neuronal differentiation.

## Highlights

- *NOTCH2NLA, B, C* expressed in human fetal brain radial glia stem cells, arose 0.5–4 mya
- These genes encode secreted, Notch-related proteins that enhance Notch signaling
- Overexpression of *NOTCH2NL* delays neuronal differentiation, while deletion accelerates it
- *NOTCH2NLA* and *NOTCH2NLB* serve as breakpoints in 1q21.1 deletion/duplication syndrome



# Human-Specific *NOTCH2NL* Genes Affect Notch Signaling and Cortical Neurogenesis

Ian T. Fiddes,<sup>1,15</sup> Gerrald A. Lodewijk,<sup>2,15</sup> Meghan Mooring,<sup>1</sup> Colleen M. Bosworth,<sup>1</sup> Adam D. Ewing,<sup>1,16</sup> Gary L. Mantalas,<sup>1,3</sup> Adam M. Novak,<sup>1</sup> Anouk van den Bout,<sup>2</sup> Alex Bishara,<sup>4</sup> Jimi L. Rosenkrantz,<sup>1,5</sup> Ryan Lorig-Roach,<sup>1</sup> Andrew R. Field,<sup>1,3</sup> Maximilian Haeussler,<sup>1</sup> Lotte Russo,<sup>2</sup> Aparna Bhaduri,<sup>6</sup> Tomasz J. Nowakowski,<sup>6</sup> Alex A. Pollen,<sup>6</sup> Max L. Dougherty,<sup>7</sup> Xander Nuttle,<sup>8,9,10</sup> Marie-Claude Addor,<sup>11</sup> Simon Zwolinski,<sup>12</sup> Sol Katzman,<sup>1</sup> Arnold Kriegstein,<sup>6</sup> Evan E. Eichler,<sup>7,13</sup> Sofie R. Salama,<sup>1,5,14</sup> Frank M.J. Jacobs,<sup>1,2,14,\*</sup> and David Haussler<sup>1,5,14,17,\*</sup>

<sup>1</sup>UC Santa Cruz Genomics Institute, Santa Cruz, CA, USA

<sup>2</sup>University of Amsterdam, Swammerdam Institute for Life Sciences, Amsterdam, the Netherlands

<sup>3</sup>Molecular, Cell and Developmental Biology Department, UC Santa Cruz, Santa Cruz, CA, USA

<sup>4</sup>Department of Computer Science, Stanford University, Stanford, CA, USA

<sup>5</sup>Howard Hughes Medical Institute, UC Santa Cruz, Santa Cruz, CA, USA

<sup>6</sup>Department of Neurology and the Eli and Edythe Broad Center for Regeneration Medicine and Stem Cell Research at the University of California, San Francisco, San Francisco, CA, USA

<sup>7</sup>Department of Genome Sciences, University of Washington School of Medicine, Seattle, WA, USA

<sup>8</sup>Center for Genomic Medicine, Massachusetts General Hospital, Boston, MA, USA

<sup>9</sup>Department of Neurology, Harvard Medical School, Boston, MA, USA

<sup>10</sup>Program in Medical and Population Genetics and Stanley Center for Psychiatric Research, Broad Institute, Cambridge, MA, USA

<sup>11</sup>Service de génétique médicale, Lausanne, Switzerland

<sup>12</sup>Department of Cytogenetics, Northern Genetics Service, Institute of Genetic Medicine, Newcastle upon Tyne, UK

<sup>13</sup>Howard Hughes Medical Institute, University of Washington, Seattle, WA, USA

<sup>14</sup>Senior authors

<sup>15</sup>These authors contributed equally

<sup>16</sup>Present address: Mater Research Institute, University of Queensland, Brisbane, Australia

<sup>17</sup>Lead Contact

\*Correspondence: [F.M.J.Jacobs@uva.nl](mailto:F.M.J.Jacobs@uva.nl) (F.M.J.J.), [haussler@ucsc.edu](mailto:haussler@ucsc.edu) (D.H.)

<https://doi.org/10.1016/j.cell.2018.03.051>

## SUMMARY

Genetic changes causing brain size expansion in human evolution have remained elusive. Notch signaling is essential for radial glia stem cell proliferation and is a determinant of neuronal number in the mammalian cortex. We find that three paralogs of human-specific *NOTCH2NL* are highly expressed in radial glia. Functional analysis reveals that different alleles of *NOTCH2NL* have varying potencies to enhance Notch signaling by interacting directly with NOTCH receptors. Consistent with a role in Notch signaling, *NOTCH2NL* ectopic expression delays differentiation of neuronal progenitors, while deletion accelerates differentiation into cortical neurons. Furthermore, *NOTCH2NL* genes provide the break-points in 1q21.1 distal deletion/duplication syndrome, where duplications are associated with macrocephaly and autism and deletions with microcephaly and schizophrenia. Thus, the emergence of human-specific *NOTCH2NL* genes may have contributed to the rapid evolution of the larger human neocortex, accompanied by loss of genomic stability at the 1q21.1 locus and resulting recurrent neurodevelopmental disorders.

## INTRODUCTION

Human brains are characterized by a large neocortex that forms the substrate for the development of human-specific cognitive functions (Molnár et al., 2006), but evolutionary changes to our genome underlying this increase in size and complexity are poorly understood (Varki et al., 2008). Structural genomic variants account for 80% of human-specific base pairs (Cheng et al., 2005). Of particular interest are loci where segmental duplications have created entirely new human-specific gene paralogs associated with cortical development, such as *SRGAP2C*, *ARHGAP11B*, and *TBC1D3* (reviewed in Dennis and Eichler [2016]). Human-specific duplicated genes are often located within segmental duplications that mediate recurrent rearrangements associated with human disease (Stankiewicz and Lupski, 2010; Popesco et al., 2006). One such region lies on human chromosome band 1q21, which was subject to a large pericentric inversion involving considerable gene loss and duplication during human evolution (Szamalek et al., 2006). The 1q21 locus contains a disproportionate number of human-specific genes (O'Bleness et al., 2012) and also contains the 1q21.1 distal deletion and duplication syndromes (henceforth referred to as 1q21.1 distal deletion/duplication syndrome) interval (Mefford et al., 2008; Brunetti-Piéri et al., 2008). *De novo* deletion of one copy frequently leads to brain size reduction (microcephaly) and duplication to brain size increase (macrocephaly), among other symptoms.



1q21.1 was incorrectly assembled in the human reference genome until the most recent version, GRCh38, (Steinberg et al., 2014). In the revised assembly, this locus harbors three human-specific NOTCH2-derived genes we call *NOTCH2NLA*, *NOTCH2NLB*, and *NOTCH2NLC*, which are highly expressed in human cortical progenitors but were never considered candidates for the 1q21.1 syndromes. Notch signaling is central to brain development, determining the timing and duration of neuronal progenitor proliferation and neuronal differentiation (Hansen et al., 2010). It is active in outer radial glia (oRG), a cell type hypothesized to generate the majority of primate cortical neurons and to contribute to human-specific cortical expansion (Lui et al., 2011). Through functional, genomic, and evolutionary analysis, we find evidence that with the creation of the modern forms of *NOTCH2NL* genes in the last few million years after divergence from chimpanzees, humans gained new, secreted NOTCH-like proteins that can enhance Notch signaling and may prolong cortical neurogenesis by delaying differentiation of neural progenitors. Our data suggest that the emergence of *NOTCH2NL* genes in humans may have contributed to the increase in size and complexity of the human neocortex at the expense of susceptibility to 1q21.1 distal duplication/deletion syndrome.

## RESULTS

### NOTCH2NL Is a Novel NOTCH-like Gene

NOTCH2NL was originally described in blood cells as a secreted peptide similar to the N-terminal portion of NOTCH2 (Duan et al., 2004). The gene annotated as *NOTCH2NL* on human genome assembly GRCh37 resides on human chromosome 1 in the 1q21.1 locus. Resequencing the pericentric region of chromosome 1 in a haploid human cell line finally resolved previously unmapped regions and led to a revised assembly of 1q21.1, which is incorporated in human genome assembly GRCh38 (Steinberg et al., 2014). This improved assembly reveals the presence of four paralogous *NOTCH2NL*-like genes (Figure 1A): *NOTCH2NLA*, *NOTCH2NLB*, and *NOTCH2NLC* reside in the 1q21.1 locus, and a fourth quite different paralog, *NOTCH2NLR* (NOTCH2NL-related), is located near *NOTCH2* on the p-arm of chromosome 1. The greater than 100 kb genomic regions spanning each *NOTCH2NL* gene show >99.1% sequence identity to *NOTCH2* (Figure S1A), suggesting that *NOTCH2NL* paralogs were created within the last few million years, in the same time frame as *SRGAP2* and *HYDIN2* (Dennis et al., 2012; Dougherty et al., 2017).

*NOTCH2NL* results from a partial duplication of *NOTCH2*. The duplicated segment includes the *NOTCH2* promoter and six N-terminal epidermal growth factor (EGF)-like domains from *NOTCH2* exons 1–4 but excludes the transmembrane and cytoplasmic domains. *NOTCH2NL* genes contain a fifth exon derived from *NOTCH2* intronic sequence that provides NOTCH2NL with 20 unique amino acids (Figures 1B and Figure S3C). In *NOTCH2NLA*, *NOTCH2NLB*, and *NOTCH2NLC*, the 5th exon has a 4 bp deletion compared to the corresponding sequence in *NOTCH2*. Mutational analysis of NOTCH2NL cDNAs shows that this 4 bp deletion is essential for NOTCH2NL protein expression (Figures S1B–S1E). *NOTCH2NLR* lacks the 4 bp deletion

and contains many coding variants relative to *NOTCH2* and the other NOTCH2NL paralogs, including a still-segregating variant (Figure S3C). Analysis of human genome sequence data from the Simons diversity project (n = 266) (Mallick et al., 2016) reveals that 14% of the population lack *NOTCH2NLR* (Figure S1G). Together, these results suggest but do not confirm that *NOTCH2NLR* is a non-functional pseudogene.

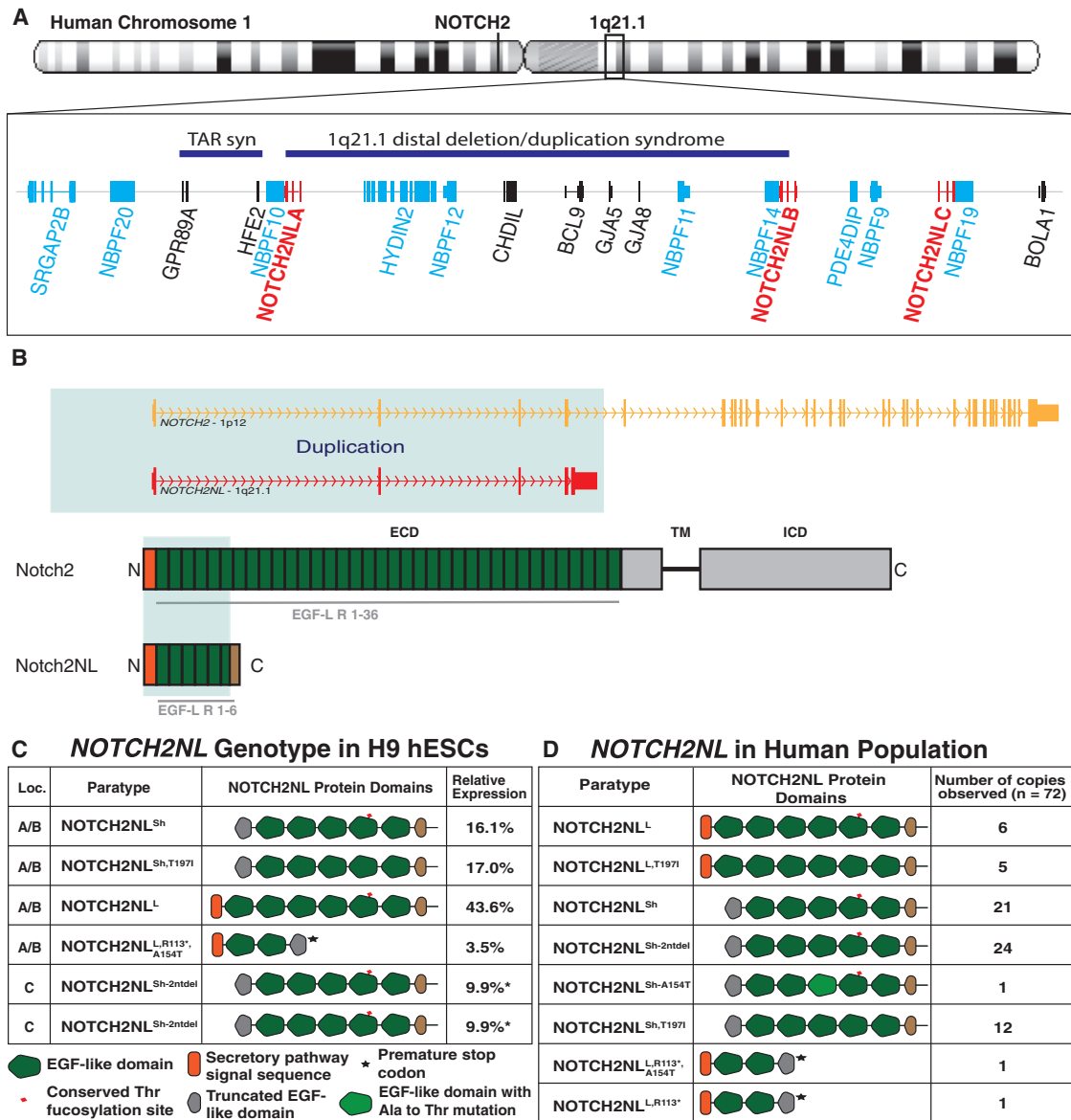
Despite the high sequence homology of the *NOTCH2NL*-gene loci, each *NOTCH2NL* paralog has distinguishing features (Figure 1D). *GRCh38-NOTCH2NLA* has an ATG → ATA mutation in the *NOTCH2* start codon and lacks the N-terminal 39 amino acids encoding the NOTCH2 secretory pathway signal peptide. We term this allele “short NOTCH2NL” (*NOTCH2NL<sup>Sh</sup>*). *GRCh38-NOTCH2NLB* retains the NOTCH2 signal peptide while carrying a Thr → Ile substitution in a conserved fucosylation site. *GRCh38-NOTCH2NLB* is named “long NOTCH2NL with Thr → Ile substitution” (*NOTCH2NL<sup>L,T197I</sup>*). *GRCh38-NOTCH2NLC* contains a 2 bp deletion just downstream of the NOTCH2 start codon (*NOTCH2NL<sup>Sh-2ntdel</sup>*) and, like *NOTCH2NL<sup>Sh</sup>*, lacks the N-terminal signal peptide.

To explore the spectrum of *NOTCH2NL* alleles in the human population, we developed an assembly-by-phasing approach (STAR Methods) and used it with deep sequencing to fully resolve the *NOTCH2NL* haplotypes in eight normal individuals and six patient samples (Figure S3C; Table S1). This analysis revealed recent, likely ongoing, ectopic gene conversion occurring between *NOTCH2NLA* and *NOTCH2NLB* that is so extensive that *NOTCH2NLA* and *NOTCH2NLB* essentially act as a single gene with four alleles (Figure S1F). This makes it nearly impossible to assign individual alleles to a specific locus.

Focusing on assembly of the H9 human embryonic stem cell (hESC) line, we identified three additional *NOTCH2NL* alleles (Figures 1C and S3C): a short version with Thr → Ile (*NOTCH2NL<sup>Sh,T197I</sup>*), a long version without Thr → Ile (*NOTCH2NL<sup>L</sup>*), and an additional long version with a SNP (rs140871032) creating a premature stop codon at position 113 as well as an Ala → Thr SNP (rs76765512) in EGF-like repeat 3 (*NOTCH2NL<sup>L,R113\*,A154T</sup>*). The Ala → Thr SNP was also found in a short allele (*NOTCH2NL<sup>Sh,A154T</sup>*) in NA12878 (Table S1). Conversely, the premature stop codon appears without the Ala → Thr SNP (*NOTCH2NL<sup>L,R113\*</sup>*) in one patient genome.

RNA sequencing (RNA-seq) analysis on H9 hESC-derived cortical organoids confirmed that all the H9 *NOTCH2NL* alleles are expressed (Figure 1C). *NOTCH2NL<sup>L,R113\*,A154T</sup>* represents only about 3.5% of the NOTCH2NL transcripts, possibly due to nonsense-mediated decay of the premature stop-codon-containing transcript. The low level of expression and the truncated protein structure of R113\*-containing variants suggest that they are non-functional.

Altogether, we identified eight *NOTCH2NL* alleles producing distinct protein or protein-abundance variants of the three NOTCH2NL genes in the 1q21 locus in 15 genomes we analyzed (Figures 1D and S3C). From here on, we refer to these *NOTCH2NL* alleles as paratypes since their physical location can vary among paralogous locations and therefore they do not conform to standard haplotypes. A typical *NOTCH2NL* genotype consists of six *NOTCH2NL* paratypes (Figure 1C) rather than two haplotypes as for most genes. We



**Figure 1. NOTCH2NL Is Located in a Neurodevelopmental Disease Locus and Exhibits Variable Gene and Protein Features**

(A) Location of NOTCH2NL genes (red) and additional genes derived from human segmental duplication (light blue). TAR syn, thrombocytopenia absent radius syndrome.

(B) Gene and protein features of NOTCH2 and NOTCH2NL.

(C) *De novo* assembly result of NOTCH2NL loci for H9 human ESCs and relative allele expression from week 5 cortical organoids. \*Not enough nucleotide differences present to distinguish between the two NOTCH2NL<sup>Sh-2ntdel</sup> alleles.

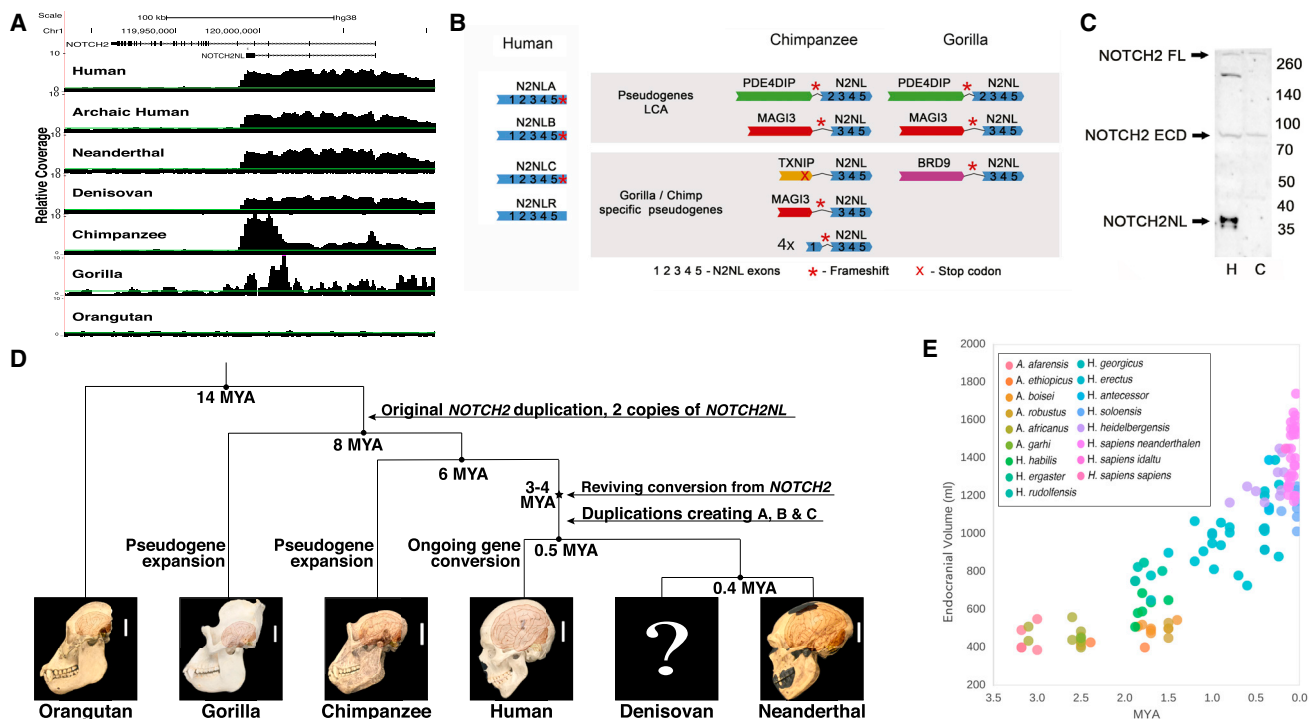
(D) Observed NOTCH2NL paratypes in 15 individuals.

See also Figures S1 and S3 and Tables S1 and S4.

expect more variants will be found when additional genomes are analyzed (Figure 1D; Tables S1 and S4).

Analysis of singly unique nucleotides (SUNs) in 2,531 low-coverage genome-sequencing datasets from the 1000 Genomes Project (Auton et al., 2015) and 266 high-coverage genomes from the Simons Diversity Project (Mallick et al., 2016; Nothaft, 2017) revealed that the combined copy number of NOTCH2NLA- and NOTCH2NLB-like paratypes is remarkably

stable. We found evidence for a combined copy number of 4 in all individuals after accounting for gene conversion. This suggests that total dosage of NOTCH2NLA- and NOTCH2NLB-like paratypes may be important. In contrast, the NOTCH2NLC-like paratype, NOTCH2NL<sup>Sh-2ntdel</sup>, has variable copy number, with the frequency of 0, 1, and 2 copies being 0.4%, 6%, and 92%, respectively, in the Simons Diversity dataset, indicating that it may not be essential.



**Figure 2. Evolutionary Analysis of NOTCH2NL-like Genes Reveals that Only Human NOTCH2NL Genes Encode NOTCH-Related Proteins**

(A) Coverage of genome sequencing reads mapped to the *NOTCH2* locus.

(B) Schematic of NOTCH2NL-containing genes.

(C) NOTCH2/NOTCH2NL immunoblot of human (H) and chimpanzee (C) cortical organoids. ECD, extracellular domain; FL, full length.

(D) Evolutionary history of NOTCH2NL genes in the great ape lineage.

(E) Endocranial volume of archaic human fossils versus time (Holloway et al., 2004).

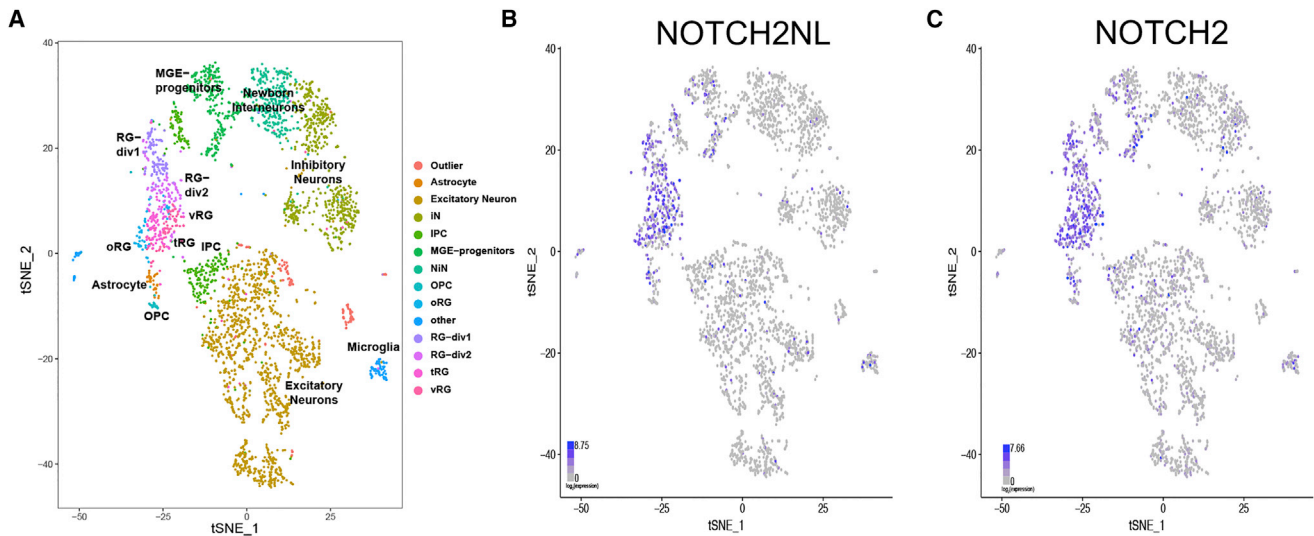
See also Figure S2.

### Multiple Rounds of Gene Duplication and Gene Conversion Led to Functional NOTCH2NL Genes Only in Humans

To explore the evolutionary history of *NOTCH2NL* genes, we assessed the presence and structure of *NOTCH2NL* genes in other primates. Based on alignment of genomic DNA-reads matching the parental *NOTCH2* locus, we established that *NOTCH2NL* emerged by a partial duplication of *NOTCH2* prior to the last common ancestor (LCA) of human, chimpanzee, and gorilla (Figure 2). Unlike human, both chimpanzee and gorilla have variable read depth over the region encompassing their *NOTCH2NL*-like sequences. This pattern suggests the existence of multiple versions of truncated *NOTCH2NL*-like genes in these species (Figure 2A). Consistent with this, we identified several different transcribed *NOTCH2NL*-like genes in chimpanzee. However, sequencing revealed that none of these genes encode NOTCH2-related proteins (Figures 2B and S2). We found four chimpanzee *NOTCH2NL*-like pseudogenes that lack a 52 kb region including exon 2 (*NOTCH2NL*-like  $\Delta$ exon2), encoding a protein of 88 amino acids with no homology to human NOTCH2NL (Figures S2D and S2F). Four additional chimpanzee *NOTCH2NL*-like pseudogenes lack either exon 1 or exons 1–2 and are fused to various 3' truncated genes with the following configurations: *PDE4DIP*<sup>exon1–27</sup>-*NOTCH2NL*<sup>exon2–5</sup>, *TXNIP*<sup>exon1</sup>-*NOTCH2NL*<sup>exon2–5</sup>, *MAGI3*<sup>exon1</sup>-*NOTCH2NL*<sup>exon3–5</sup>,

and *MAGI3*<sup>exon1–14</sup>-*NOTCH2NL*<sup>exon3–5</sup> (Figures 2B and S2A). Sequencing of transcripts derived from these *NOTCH2NL*-fusion pseudogenes established that the *NOTCH2NL* exons in all of them were out of frame with the upstream exons (Figure S2E). Finally, we do not detect NOTCH2NL in protein extracts from chimpanzee stem cell-derived cortical tissues under the same conditions where we detect human NOTCH2NL protein (Figure 2C). Overall, our analysis suggests chimpanzees lack a functional *NOTCH2NL* gene, but instead harbor a total of 8 NOTCH2NL pseudogenes.

In gorilla, three *NOTCH2NL*-fusion pseudogenes were identified (Figure S2B) of which two were similar to *NOTCH2NL*-fusion pseudogenes found in chimpanzee: *PDE4DIP*<sup>exon1–27</sup>-*NOTCH2NL*<sup>exon2–5</sup> and *MAGI3*<sup>exon1–14</sup>-*NOTCH2NL*<sup>exon3–5</sup>. Transcript support was obtained for *BRD9*-*NOTCH2NL* and *PDE4DIP*<sup>exon1–27</sup>-*NOTCH2NL*<sup>exon2–5</sup> using RNA from gorilla induced pluripotent stem cells (iPSCs) (Ramsay et al., 2017) (Figure S2C). The presence of two nearly identical fusion pseudogenes in gorilla and chimpanzee suggests that these were formed in the LCA of human, chimp, and gorilla. However, neither are found in the human genome. Human *NOTCH2NL* genes are all in the vicinity of *PDE4DIP*, but human *NOTCH2NL* genes have a 5' genomic structure highly similar to *NOTCH2*. This suggests a plausible evolutionary history of *NOTCH2NL* genes as follows (Figure 2D): Both the



**Figure 3. Radial-Glia-Specific Expression of NOTCH2NL in Human Fetal Brain Samples**

(A–C) Scatterplot of 3,466 fetal brain cells after single-cell RNA-seq principal components analysis and t-stochastic neighbor embedding (tSNE) as described in Nowakowski et al. (2017). Cells are colored by annotated cell type clusters (A), *NOTCH2NL* expression (B), and *NOTCH2* expression (C).

See also Figure S3.

*PDE4DIP-NOTCH2NL* and *MAGI3-NOTCH2NL* fusion pseudogenes were present in the LCA of human, chimp, and gorilla. Then, only in the human lineage, the ancestral *PDE4DIP-NOTCH2NL* fusion gene was “revived” by *NOTCH2* through ectopic gene conversion. With the acquisition of exon 1 and the upstream promoter, a viable *NOTCH2NL* gene encoding a stable NOTCH2-related protein was created. Because no remnants of a *MAGI3-NOTCH2NL* fusion pseudogene are found in the human genome, it must have been lost, perhaps in the upheaval of the pericentric inversion on chromosome 1 and subsequent large-scale copy-number changes (Szamalek et al., 2006). The revived human *NOTCH2NL* subsequently duplicated twice more to form three nearly identical *NOTCH2NL* genes in the 1q21.1 locus. Chimpanzee and gorilla had additional, species-specific duplications involving *NOTCH2NL*-related sequence, but none produced functional genes.

Based on comparative genome analysis of archaic humans (Lazaridis et al., 2014), Neanderthals (Prüfer et al., 2014, 2017), and Denisovans (Meyer et al., 2012); the number of substitutions between *NOTCH2* and *NOTCH2NL*; and the analysis in Figure 2A, we estimate that the gene conversion event generating a functional *NOTCH2NL* happened between 4 and 3 million years ago (mya). This corresponds to a time just before or during the early stages of the expansion of the human neocortex (Holloway et al., 2004) (Figure 2E). Our proposed scenario of *NOTCH2NL* evolution involves multiple lineage-specific gene duplications, rearrangements, losses, and ectopic gene conversion, consistent with what has been previously reported for this locus (Nuttie et al., 2013; O’Bleness et al., 2012). This propensity for repeated complex genomic alterations is characteristic of what have been called duplication hubs in the ape genomes (Bailey and Eichler, 2006). *NOTCH2NL* appears to be part of such a hub.

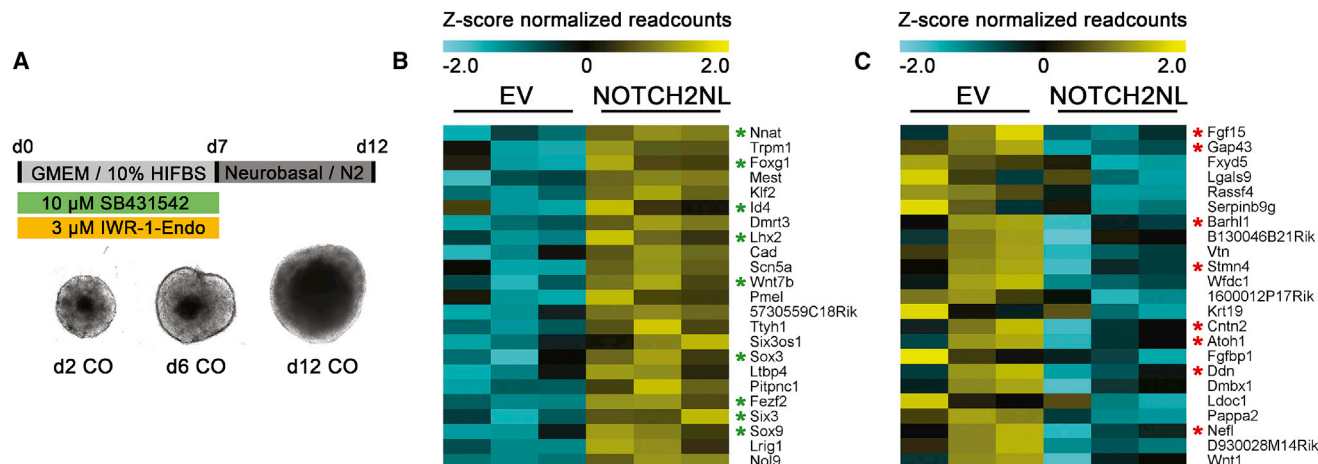
### NOTCH2NL Is Expressed in Radial Glia Neural Stem Cells during Human Cortical Development

We examined *NOTCH2NL* expression in 3,466 single cells derived from human fetal brains ranging in age from 11 to 21.5 gestational weeks that were sampled from multiple regions of the dorsal and ventral telencephalon (Nowakowski et al., 2017) (Figure 3). This dataset contains a broad diversity of cell types including radial glia (RG) neural stem cells, intermediate progenitor cells (IPC), excitatory and inhibitory neurons, oligodendrocyte progenitors (OPC), astrocytes, and microglia. The *NOTCH2NL* expression pattern closely resembles that of *NOTCH2* and is highest in various RG populations, including oRG as well as astrocytes and microglia (Figures 3 and S3A).

We also estimated the relative expression of the H9 hESC paratypes of *NOTCH2NL* in undifferentiated H9 hESCs and week 5 hESC-derived cortical organoids. Illumina short-read RNA-seq data suggest that *NOTCH2NL<sup>L</sup>* has the highest expression and that the other *NOTCH2NL* paratypes are expressed at levels 20%–60% of *NOTCH2NL<sup>L</sup>* (Figure S3B). As a more precise approach, we sequenced a full-length cDNA library enriched for *NOTCH2NL* transcripts by MinION nanopore. The results confirmed that *NOTCH2NL<sup>L</sup>* has the highest expression, accounting for 43.6% of the transcripts, and indicated that the other paratypes have expression levels between ~8% and 40% of *NOTCH2NL<sup>L</sup>* (Figure 1C).

### Ectopic Expression of NOTCH2NL Delays Mouse Cortical Neuron Differentiation

To investigate the role of *NOTCH2NL* in RG and neuronal differentiation, we assessed the effects of ectopic *NOTCH2NL* expression in mouse cortical organoids. We generated a stable mouse ESC line ectopically expressing human *NOTCH2NL<sup>Sh,T197I</sup>* along with an empty vector (EV) control cell line, which were used to generate cortical organoids (Eiraku



**Figure 4. Ectopic Expression of NOTCH2NL Delays Neuronal Differentiation**

(A) Overview of mouse cortical organoid differentiation protocol.

(B and C) Genes upregulated (B) or downregulated (C) in mouse organoids ectopically expressing NOTCH2NL<sup>Sh, T1971</sup> compared to EV. Green asterisk, radial-glia-associated genes; Red asterisk, neuron differentiation genes.

See also Figure S4 and Table S2.

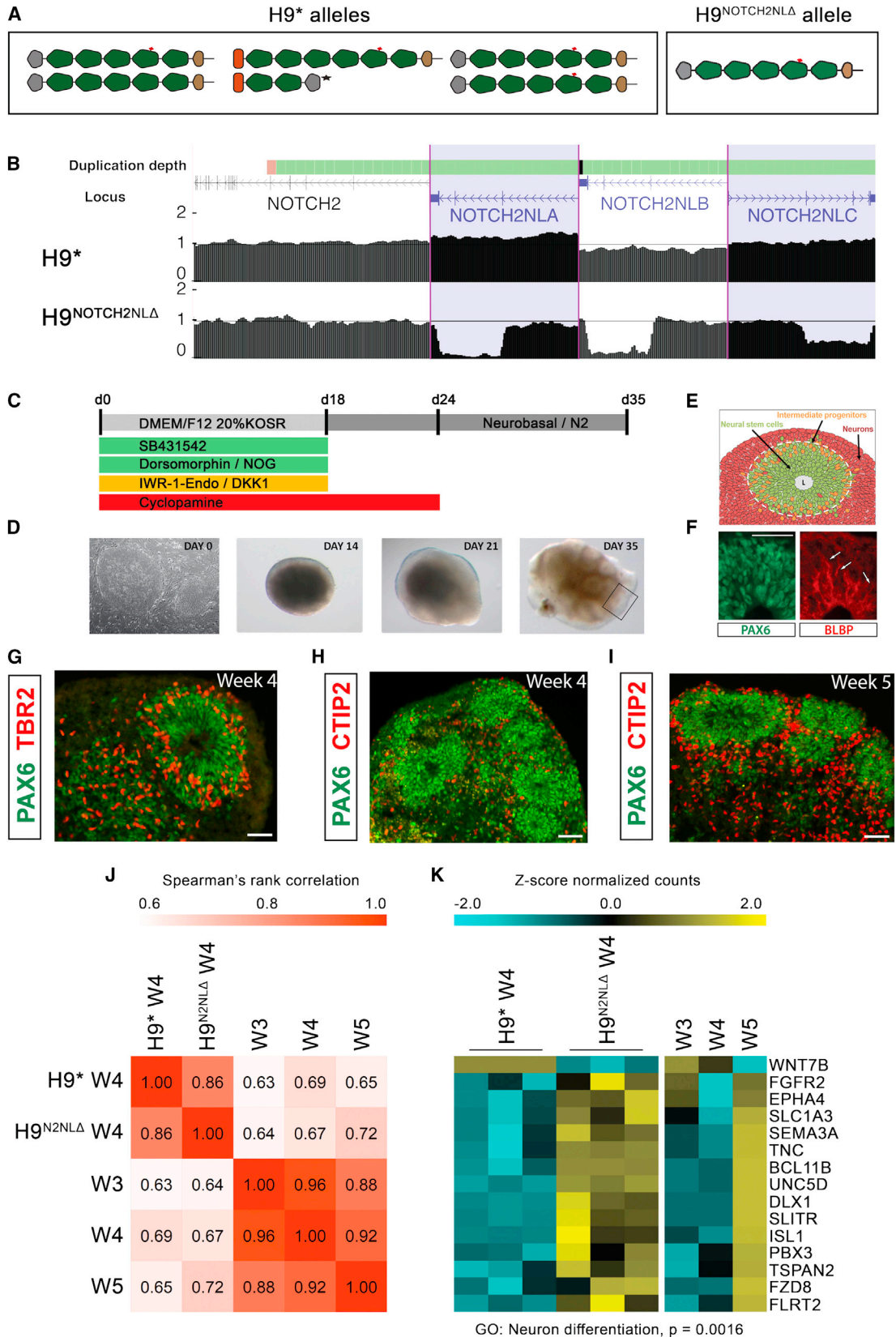
et al., 2008) (Figure 4A). NOTCH2NL-expressing organoids did not show gross differences compared to the EV controls (Figures S4D and S4E). At day 6, a stage where most cells express the radial glial cell markers Pax6 and Sox2, samples were harvested for RNA-seq. 147 differentially expressed (DE) genes were found ( $p\text{-adj} < 0.05$ ; Figures S4A and S4B; Table S2). NOTCH2NL-expressing organoids showed increased expression of genes involved in negative regulation of neuron differentiation, such as *Foxg1*, *Id4*, *Fezf2*, *Sox3*, and *Six3* (Figure 4B). *Id4* is particularly interesting as it is a downstream effector of Notch signaling that mediates the effect of NOTCH activation on neuronal progenitor fate decisions (Boareto et al., 2017). Several genes associated with neuronal differentiation were downregulated, including *Cntn2*, *Nefl*, *Gap43*, and *Sox10* (Figures 4C and S4C). These results suggest that ectopic expression of NOTCH2NL in mouse organoids delays differentiation of neuronal progenitor cells.

### Deletion of NOTCH2NL Affects Human Cortical Organoid Development

To explore the functional role of *NOTCH2NL* in human cortical neurogenesis, we used CRISPR/Cas9 to delete *NOTCH2NL* genes in hESCs, producing a clone with a homozygous deletion of both *NOTCH2NLA* and *NOTCH2NLB* and a heterozygous deletion of *NOTCH2NLC* (Figure S5B). *NOTCH2* and *NOTCH2NLR* were unaffected. This clone is denoted H9<sup>NOTCH2NLΔ</sup> (Figures 5A and 5B). As a control, another clone was selected that went through the same CRISPR/Cas9 transfection and selection process but for which we did not detect deletions in *NOTCH2* or *NOTCH2NL* loci (denoted H9\*).

Cortical tissues were generated from these clones by directed differentiation (Eiraku et al., 2008) (Figures 5C and 5D). hESC-derived cortical organoids resemble early developmental stages of primate cortex development (Figures 5E–5I), displaying neural rosette structures of radially organized RG cells giving rise to

cortical neurons (Figures 5E and 5F). RNA-seq analysis of cortical organoids isolated at weekly time points reveals H9 hESC-derived cortical organoids display efficient and selective induction of dorsal forebrain marker genes, highly resembling the expression pattern during early stages (8–9 post-conception weeks) of human dorsal forebrain development *in vivo* (Figure S5A; Table S2). Throughout the experiment, H9<sup>NOTCH2NLΔ</sup> organoids were smaller in size compared to control (H9\*) organoids (Figures S5C and S5D). To analyze the effect of NOTCH2NL deletion on gene expression, we performed RNA-seq analysis on cortical organoids isolated at week 4 (w4) and discovered DE genes between H9<sup>NOTCH2NLΔ</sup> and H9\*. Gene expression of the top 250 up- and downregulated DE genes was correlated to previously generated RNA-seq profiles of H9 w3, w4, and w5 cortical organoids. This analysis revealed that differentially expressed genes in w4 H9\* correlate best with w4 H9 cortical organoids. Strikingly, w4 H9<sup>NOTCH2NLΔ</sup> showed a better correlation with w5 H9 cortical organoids (Figure 5J). This indicates that w4 H9<sup>NOTCH2NLΔ</sup> organoids prematurely display characteristics of w5 organoids and are advanced in their development compared to H9\* organoids. Gene ontology (GO)-term enrichment analysis for the 212 genes DE genes in H9<sup>NOTCH2NLΔ</sup> that correlate better with w5 than w4 H9 organoids (Figure 5K) showed enrichment for genes involved in neuron differentiation, including key regulators of neuron differentiation such as the cortical layer V marker *BCL11B* (*CTIP2*), *DLX1*, *SEMA3A*, *UNC5D*, and *FGFR2*. Immunofluorescent staining of multiple week 4 organoids supported these findings: w4 H9<sup>NOTCH2NLΔ</sup> organoids display similar capacities to form SOX2-positive neural rosettes as H9\* (Figures S5E–S5G). However, there was an increase in CTIP2 protein levels in w4 H9<sup>NOTCH2NLΔ</sup> organoids compared to w4 H9\* organoids (Figures S5H–S5J), similar to the w4–w5 transition in previously analyzed H9 organoids (Figures 5H and 5I). This further supports that NOTCH2NL has a role in delaying differentiation of neuronal progenitors in human cortical organoids.



(legend on next page)



### NOTCH2NL Interacts with NOTCH Receptors and Enhances Notch Signaling

We next tested whether NOTCH2NL can influence Notch signaling. The six N-terminal EGF-like domains encoded in NOTCH2NL, also present in NOTCH2 receptors, do not have a clearly described function in Notch signaling. Yet they are conserved from *Drosophila* to human, indicating an important functional role. There is evidence that N-terminal EGF-like domains are involved in dimerization of NOTCH receptors and that receptor dimerization modulates NOTCH activity (Duering et al., 2011; Nichols et al., 2007). For example, in a hereditary stroke disorder called CADASIL, mutations in the five N-terminal EGF-like domains of NOTCH3 cause aberrant aggregation and dysfunction of NOTCH3 receptors (Karlström et al., 2002).

Consistent with a role of the N-terminal EGF-like domains in dimerization of NOTCH receptors, we were able to co-immunoprecipitate (coIP) NOTCH2NL with NOTCH2 and vice versa, suggesting that NOTCH2NL and NOTCH2 can physically interact (Figure 6A). Under these coIP conditions, we did not find detectable interactions of NOTCH2NL with EGFR and PDGFRB, other EGF-like domain containing proteins (Figures S6A and S6B).

To assess the influence of NOTCH2NL on NOTCH2 receptor activation, a luciferase reporter assay was used in which the intracellular DNA-binding domain (NOTCH2-ICD) was replaced with a GAL4 domain (NOTCH2-GAL4) and coupled with a pGL3-UAS luciferase reporter. This experimental setup allows for precise measurements of NOTCH2 activation, without secondary effects from other NOTCH receptors or other interacting pathways (Habets et al., 2015; Groot et al., 2014). Co-transfection of *NOTCH2NL<sup>Sh</sup>* or *NOTCH2NL<sup>L,T197I</sup>* with *NOTCH2-GAL4* in U2OS cells increased pGL3-UAS reporter activity by 24% and 63%, respectively (Figure 6B), indicating that both short and long forms of NOTCH2NL can enhance NOTCH2 activation. Next, we co-cultured U2OS cells transfected with *NOTCH2-GAL4* and either EV, *NOTCH2NL<sup>Sh</sup>*, or *NOTCH2NL<sup>L,T197I</sup>* on top of a layer of cells expressing the canonical NOTCH ligand Jagged 2 (JAG2) (U2OS-JAG2) or control (U2OS) cells. Under these ligand-mediated conditions where the baseline NOTCH2 activation was ~10-fold higher, *NOTCH2NL<sup>Sh</sup>* and *NOTCH2NL<sup>L,T197I</sup>* still increased NOTCH2 activation by 23% and 21%, respectively. This demonstrates that even under high-signaling conditions, NOTCH2NL can enhance Notch signaling (Figure 6C).

NOTCH2NL is secreted by cells that express it (Duan et al., 2004) (Figure 6D). Conditioned medium from cells transfected with EV, *NOTCH2NL<sup>Sh</sup>*, or *NOTCH2NL<sup>L,T197I</sup>* was added for 24 hr to cells transfected with only NOTCH2-GAL4 and the luciferase reporter. Both *NOTCH2NL<sup>Sh</sup>*- and *NOTCH2NL<sup>L,T197I</sup>*-

conditioned medium increased reporter activity by 24% and 22%, respectively (Figure 6E). This indicates that secreted *NOTCH2NL<sup>Sh</sup>* and *NOTCH2NL<sup>L,T197I</sup>* can enhance NOTCH2 activation, despite their different N-terminal structures (Figure 1C), and suggests that *NOTCH2NL<sup>Sh</sup>* is secreted by an unconventional pathway (Rabouille, 2017). In the co-transfection experiments, *NOTCH2NL<sup>L,T197I</sup>* was clearly more potent than *NOTCH2NL<sup>L,T197I</sup>*-conditioned medium, whereas *NOTCH2NL<sup>Sh</sup>* had similar potency in both settings (Figure 6B). This suggests that *NOTCH2NL<sup>L,T197I</sup>* can enhance Notch signaling through both intracellular and extracellular mechanisms, whereas *NOTCH2NL<sup>Sh</sup>* acts primarily through extracellular mechanisms in these assays.

We found that the ability of NOTCH2NL to enhance NOTCH activation is not limited to NOTCH2. *NOTCH2NL<sup>Sh</sup>* and *NOTCH2NL<sup>L,T197I</sup>* were able to activate NOTCH1-GAL4 and NOTCH3-GAL4 constructs alone or under ligand-stimulated conditions, at similar levels to NOTCH2-GAL4 (Figures 6F–6G and S6C). We also found that *NOTCH2NL<sup>Sh</sup>* and *NOTCH2NL<sup>L,T197I</sup>* enhance NOTCH2 activity when stimulated by other NOTCH ligands, DLL1 (Figure S6D) and DLL4 (Figure S6E). Thus, the potency of NOTCH2NL to enhance NOTCH receptor activation is not restricted to specific NOTCH paralogs or NOTCH-ligands.

Our paratype analysis revealed that both *NOTCH2NL<sup>Sh</sup>* and *NOTCH2NL<sup>L</sup>* exist as paratypes with and without a T197I substitution (Figure 1C). This substitution disrupts a conserved fucosylation site. Interestingly, the single amino acid changes had subtle but significant influences on NOTCH2 activation. *NOTCH2NL<sup>Sh</sup>* and *NOTCH2NL<sup>Sh,T197I</sup>* performed similar under baseline conditions (29% and 31% increase, respectively; Figure 6H). However, with JAG2 co-culture, *NOTCH2NL<sup>Sh,T197I</sup>* was more potent than *NOTCH2NL<sup>Sh</sup>* (53% and 25% increase, respectively; Figure 6I). Under baseline conditions, *NOTCH2NL<sup>L,T197I</sup>* was a more potent activator than *NOTCH2NL<sup>L</sup>* (63% and 21% increase, respectively; Figure 6J), while under ligand stimulated conditions, *NOTCH2NL<sup>L,T197I</sup>* had less effect than *NOTCH2NL<sup>L</sup>* (17% and 38% increase, respectively; Figure 6K). These data are striking in that they show that single, segregating amino acid changes between NOTCH2NL paratypes have subtle but significant differences in their potency to enhance NOTCH2 activity.

### Deletions and Duplications of NOTCH2NL Genes Are Associated with Neurodevelopmental Phenotypes

The 1q21.1 locus has been associated with a developmental disorder called 1q21.1 distal deletion/duplication syndrome

#### Figure 5. Cortical Organoids from hESCs Lacking NOTCH2NL Show Premature Neuronal Maturation

(A and B) Schematic of *NOTCH2NL* alleles (A) and UCSC genome browser view of NOTCH2 and NOTCH2NL loci showing normalized genome sequencing coverage (B) in control (H9\*) and NOTCH2NL mutant (H9<sup>NOTCH2NLΔ</sup>) cell lines.

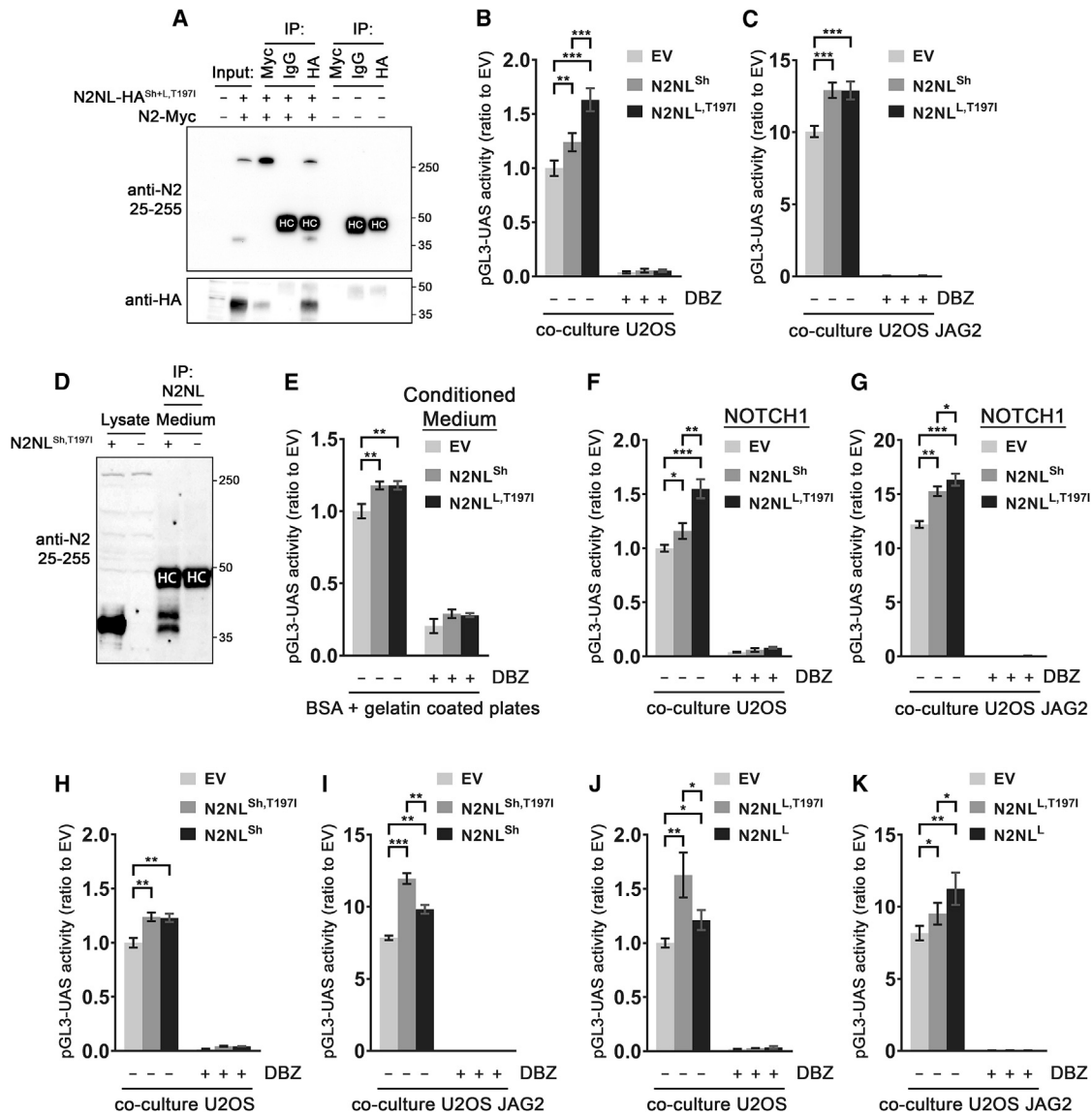
(C–E) Cortical organoid protocol schematic (C) with bright field images (D) and cell types generated (E).

(F–I) Immunofluorescence staining of cortical organoids with markers of radial glia (PAX6, BLBP), intermediate progenitors (TBR2), and layer V cortical neurons (CTIP2). Scale bar, 50 μm.

(J) Spearman's rank correlation using the top 250 upregulated and downregulated genes (H9<sup>NOTCH2NLΔ</sup> / H9\*) and data from previously generated w3, w4, and w5 H9 organoids.

(K) Heatmap showing expression for a selection of genes in the significantly enriched GO cluster "neuron differentiation."

See also Figure S5 and Table S2.

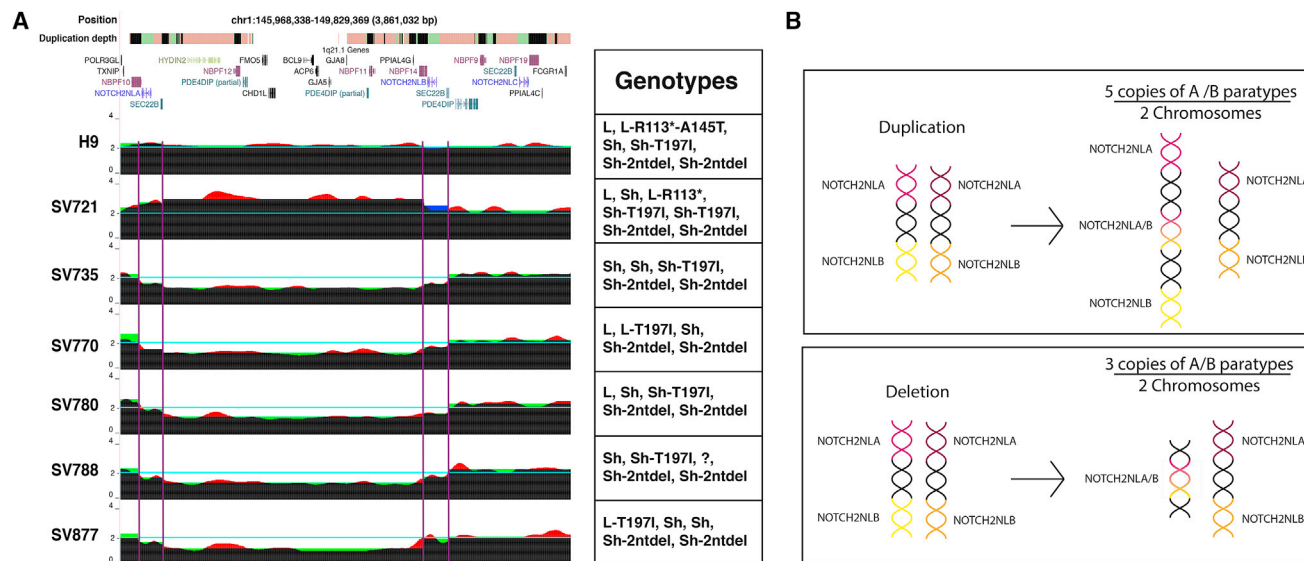


**Figure 6. NOTCH2NL Paratypes Interact with NOTCH Receptors and Enhance Notch Signaling**

(A) Co-immunoprecipitation of NOTCH2 and NOTCH2NL analyzed by immunoblot. IP, immunoprecipitation; N2NL, NOTCH2NL. (B and C) Co-transfection of NOTCH2-GAL4 and NOTCH2NL in the pGL3-UAS reporter assay in co-culture with U2OS cells (B) or U2OS-JAG2 cells (C). n = 24 in four experiments. (D) Immunoblot showing immunoprecipitated NOTCH2NL in the medium of mouse ESCs ectopically expressing NOTCH2NL. (E) Effect of NOTCH2NL-conditioned medium in NOTCH reporter assay. n = 7 in two experiments. One-way anova with Tukey's HSD ( $p < 10^{-4}$ ). (F and G) NOTCH reporter assay using the NOTCH1 receptor in conjunction with NOTCH2NL. (H–K) Assessment of common NOTCH2NL variants in reporter assay. (H and I) n = 12 in two experiments. (J and K) n = 6 in one experiment, t test with Holm-Bonferroni correction ( $*p < 0.05$ ,  $**p < 10^{-3}$ ); error bars indicate SD. Data is analyzed using two-way anova with Tukey's HSD ( $*p < 10^{-4}$ ,  $**p < 10^{-8}$ ,  $***p < 10^{-12}$ ). Error bars indicate SEM unless otherwise specified. See also Figure S6.

(Mefford et al., 2008; Rosenfeld et al., 2012) (Figure S7). Supporting the high recurrence frequency of the event, 18%–50% of distal duplications and deletions are *de novo* (Haldeman-Englert and Jewett, 1993). Not all individuals are symptomatic. The carrier frequency of the deletion in the European general population has been estimated at 0.03% and the duplication at 0.05% (Macé et al., 2017).

When present, common neurological symptoms include microcephaly or macrocephaly (Mefford et al., 2008; Rosenfeld et al., 2012), schizophrenia (International Schizophrenia Consortium, 2008; Macé et al., 2017), and autism (Bernier et al., 2016). In patients ascertained as part of the Simons Variation in Individuals (VIP) autism study, 1q21.1 distal duplication probands exhibited ADHD (29%), behavior disorder (18%), autism



**Figure 7. Patients with 1q21.1 Distal Deletion/Duplication Syndrome Show Breakpoints and CNV in *NOTCH2NLA* and *NOTCH2NLB***

(A) UCSC Genome Browser screenshot from GRCh38. The duplication-depth track indicates duplicated genome sequences as colored bars: white (single copy,  $n = 1$ ), orange ( $n = 2-4$ ), green ( $n = 5$ ), black ( $n > 5$ ). DNA-sequence-coverage tracks were generated in three ways: (1) normalized read depth was calculated based on the entire region (red) or (2) by segmenting into five subregions (centromeric to *NOTCH2NLA*, *NOTCH2NLA*, between *NOTCH2NLA* and *NOTCH2NLB*, *NOTCH2NLB*, and telomeric to *NOTCH2NLB* [green]) (STAR Methods), and (3) average coverage for breakpoints within *NOTCH2NLA* and *NOTCH2NLB* is shown as step function (blue). Where all models agree, the colors combine to black.

(B) Schematic of the *NOTCH2NL* chromosomal configuration before and after a duplication or deletion event.

See also Figure S7 and Tables S3 and S4.

spectrum disorder (41%), developmental coordination disorder (23%), and intellectual disability (29%), while deletion probands exhibited these symptoms at lower frequencies, but with a relatively high percentage (26%) exhibiting anxiety and mood disorders (Bernier et al., 2016).

*NOTCH2NL* was never considered a candidate for the 1q21.1 distal syndrome, because in the GRCh37 assembly, which was used for the studies that mapped 1q21.1 copy-number variations (CNVs), *NOTCH2NL* was incorrectly positioned. We reanalyzed CNV microarray data derived from 11 patients previously characterized with 1q21.1 CNV-associated microcephaly or macrocephaly by remapping to GRCh38. The results suggest that *NOTCH2NLA* and *NOTCH2NLB* are located inside the 1q21.1 distal deletion or duplication locus of these patients (Figure S7). All nine microcephaly cases were consistent with *NOTCH2NLA* and/or *NOTCH2NLB* deletion, and both macrocephaly cases were consistent with *NOTCH2NLA* and/or *NOTCH2NLB* duplication. In at least one out of nine microcephaly patients, the *HYDIN2* locus exhibits a normal copy number, consistent with previous findings (Dougherty et al., 2017).

The sparsity of unique probes in the highly repetitive 1q21.1 region precludes a precise breakpoint analysis of these older data. To more accurately map the CNV breakpoints in 1q21.1 patients, we obtained primary fibroblasts from six autism patients in the Simons VIP project (Bernier et al., 2016)—one patient with a 1q21.1 distal duplication and five with distal deletions (Figure 7; Table S3). Deep-sequencing coverage analysis of array-enriched 10× Genomics Chromium data demonstrates that all of the Simons 1q21.1 patients have deletion or duplication break-

points within or close to the genomic coordinates containing *NOTCH2NLA* and *NOTCH2NLB*, giving a deleted or duplicated region of ~2.4 megabases (Figure 7A).

In 1q21.1 deletions, we see normal copy number 2 for unique DNA outside of the locus and copy number 1 for unique DNA inside the locus. On the positions of *NOTCH2NLA* and *NOTCH2NLB*, we observe a copy number of roughly 1.5. This is consistent with a scenario where a homology-driven deletion with breakpoints inside or adjacent to *NOTCH2NA* and *NOTCH2NLB* on one of the chromosomes leaves a single hybrid *NOTCH2NLA/B* gene (Figure 7B). Likewise, in the case of 1q21.1 duplication, a copy number of roughly 2.5 is observed, consistent with the presence of an additional hybrid *NOTCH2NLA/B* allele.

Assembly of *NOTCH2NL* paratypes in the sequencing data derived from these patients confirmed that indeed all of the deletion samples have three *NOTCH2NLA/B* alleles and that the duplication sample has five. In all but one sample (SV788), we could determine all of the hybrid *NOTCH2NLA/B* paratypes (Figure 7; Table S1). Our data suggests that the typical 1q21.1 distal deletions and duplications are caused by non-allelic homologous recombination between the highly homologous *NOTCH2NLA* and *NOTCH2NLB* loci and that these events produce *NOTCH2NL* copy-number change.

## DISCUSSION

*NOTCH2NL* joins *ARHGAP11B* (Florio et al., 2015) and *BOLA2* (Nuttie et al., 2016) as a third example of the concomitant

emergence of a potential adaptive evolutionary innovation and susceptibility to a recurrent genomic disorder from chromosomal instability mediated by human-specific duplication hubs. Such hubs are an important reservoir of new genes, carrying with them the potential to rapidly change the structure of the genome via non-allelic homologous recombination. Promising genes recently implicated in human brain evolution including *SRGAP2C* and *TBC1D3* map to regions of human-specific structural variation (Dennis and Eichler, 2016).

The peculiar evolutionary history of *NOTCH2NL* includes a series of genomic reorganization events resulting in three functional NOTCH-related genes only in humans. The most plausible scenario is that in a common ancestor of humans, Neanderthals, and Denisovans, the ancestral *PDE4DIP-NOTCH2NL* pseudogene was repaired by ectopic gene conversion from *NOTCH2*. This event may have been crucial to human evolution, marking the birth of a novel human-specific NOTCH-related gene involved in differentiation of neuronal progenitor cells. *NOTCH2NL* likely functions to delay yet eventually increase production of neurons from radial glia during fetal brain development. This may represent a new mechanism for neoteny in human neurodevelopment, along with that hypothesized for delayed and ultimately increased development of dendritic spines (Charrier et al., 2012).

*NOTCH2NL* is expressed in the germinal zones of the developing human cortex. Of particular interest is its expression in outer radial glia cells, thought to be involved in the evolutionary expansion of the human cortex (Hansen et al., 2010; Lui et al., 2011). It has remained elusive how the loosely organized oRG cells maintain their sustained capacity for self-renewal and proliferation. Recent work suggests that oRG cells directly contribute to a stem cell niche in the outer subventricular zone through increased expression of extracellular matrix proteins and growth signal factors (Pollen et al., 2015) and that Notch signaling is essential for oRG cell self-renewal (Hansen et al., 2010). Our findings that *NOTCH2NL* has an enhancing effect on NOTCH activation and delays differentiation of neuronal progenitors in organoids raises the possibility that *NOTCH2NL* may be one of the factors that evolved to support oRG cell self-renewal.

In modern humans, three *NOTCH2NL* genes exist as at least eight different “paratypes.” *NOTCH2NL* function in any particular genotype may depend on the combined expression pattern of structurally distinct *NOTCH2NL* paratypes. Our data suggest that the short forms of *NOTCH2NL* may act primarily in an extracellular context and are likely secreted by unconventional secretion pathways due to the lack of a signal peptide. In contrast, the long forms of *NOTCH2NL* contain the signal peptide required to enter the canonical secretory pathway, where they encounter NOTCH receptors and ligands in secretory vesicles before they are transported out of the cell. The different paratypes of *NOTCH2NL* have different potencies to enhance NOTCH activity and are possibly the product of ongoing evolutionary gene-dosage optimization of NOTCH pathway modulation.

Despite increased structural variation in the region, the overall copy number of *NOTCH2NLA* and *NOTCH2NLB* is remarkably stable at a combined copy number 4 in all individuals analyzed

for the current human population, suggesting selection. However, we find normal individuals with 1 (31/266) or even 2 (4/266) *NOTCH2NL* paratypes containing the premature stop-encoding SNP (R113\*). This, combined with the different effects of the *NOTCH2NL* protein variants, makes it difficult to argue for intensive ongoing selection for either overall dosage or for dosages of a specific combination of allele types. Many more individual genomes need to be fully resolved with regard to the organization of *NOTCH2NL* paratypes to disentangle the selective forces on *NOTCH2NL* genotypes, which for now remain mysterious. Is the physiological system robust to *NOTCH2NL* paratype differences, or has the optimal balance of *NOTCH2NL* alleles not been fixed in the population?

Based on our study, *NOTCH2NLA* and *NOTCH2NLB* should be considered new candidates for contributing to the neurological phenotypes of 1q21.1 distal deletion/duplication syndrome. However, they are not the only genes whose copy number is changed. Protein-coding genes between *NOTCH2NLA* and *NOTCH2NLB* include *HYDIN2*, *CHD1L*, *BCL9*, *GJA5*, *GJA8*, *PRKAB2*, *FMO5*, *ACP6*, *PPIAL4G*, *GPR89B*, and DUF1220-domain-containing *NBPF* paralogs. The progressive increase in number of DUF1220 domains in primate genomes was shown to correlate with the evolutionary expansion of the neocortex (Popesco et al., 2006). *CHD1L* is amplified in many solid tumors and promotes tumor growth (Cheng et al., 2013), suggesting a role in cell proliferation. *HYDIN2* was a strong candidate, but recent work found six symptomatic patients with atypical breakpoints excluding *HYDIN2*, thus eliminating it as a likely driver (Dougherty et al., 2017). Mapping of these atypical patients indicates that the *NOTCH2NLB* locus was fully duplicated in all three atypical duplication cases (all macrocephalic) and fully deleted in all three atypical deletion cases (all microcephalic). Therefore, these cases are consistent with a contribution of *NOTCH2NL* to 1q21.1 deletion/duplication syndrome. There are scattered reports of patients with smaller duplications or deletions, including neither *NOTCH2NLA* nor *NOTCH2NLB* (Girirajan et al., 2013; Van Dijck et al., 2015). These studies have variously pointed to *CHD1L*, *BCL9*, or *LINC00624* as causative genes. However, no mechanistic explanation for the possible association of these genes with neurodevelopmental changes has been established. Thus, multiple genes may contribute, but by providing the substrates for non-allelic homologous recombination, *NOTCH2NL* genes clearly enable the 1q21.1 distal deletion/duplication syndrome.

The strong directional association of 1q21.1 distal deletion/duplication syndrome with brain size, with duplications tending to cause macrocephaly and deletions microcephaly, is most intriguing from a *NOTCH2NL* evolutionary perspective: duplications are associated with increased *NOTCH2NL* dosage, which in *ex vivo* experiments delays differentiation of neuronal progenitor cells, allowing for a longer period of proliferation. In support of our findings, a companion study by Suzuki et al. (2018) provides evidence that ectopic *NOTCH2NL*<sup>L,T1971</sup> can increase the expansion of radial glia and long-term neuronal output. Conversely, deletions decrease *NOTCH2NL* dosage, which in *ex vivo* experiments promotes premature differentiation of human neuronal progenitor cells into cortical neurons. While still preliminary, these data support a role of *NOTCH2NL* genes not

only in the cognitive and brain size symptoms of 1q21.1 distal deletion/duplication syndrome but also in the evolution of the human-specific larger brain size. A delay in cortical maturation, coupled with a net increase in the size of the neocortex, in large part from sustained activity of oRG progenitor cells, is characteristic of human brain development. Humans may in fact be caught in an evolutionary compromise in which having multiple copies of *NOTCH2NL* provides a neurodevelopmental function we need while at the same time predisposing our species to recurrent *de novo* non-allelic homologous recombination events that underlie a neurodevelopmental syndrome and contribute to our overall genetic load. Given the many different alleles (“paratypes”) of *NOTCH2NL* we observe segregating in the current human population, the tension caused by this compromise may still be a factor in our ongoing evolution.

## STAR★METHODS

Detailed methods are provided in the online version of this paper and include the following:

- **KEY RESOURCES TABLE**
- **CONTACT FOR REAGENT AND RESOURCE SHARING**
- **EXPERIMENTAL MODEL AND SUBJECT DETAILS**
  - Mouse cell culture
  - Human cell culture
  - NOTCH reporter cell line culture
  - Great ape iPSC cultures
- **METHOD DETAILS**
  - Mouse ESC stable cell line generation and organoid differentiation
  - Human cortical organoid differentiation
  - RNA-Sequencing Analysis
  - Organoid immunofluorescence staining
  - Co-immunoprecipitation and immunoblot
  - NOTCH reporter co-culture assays
  - RT-PCR characterization of primate *NOTCH2NL* fusion genes
  - Oligo capture library generation
  - Library Preparation and Enrichment of 10x Chromium Libraries
  - Sequencing of Enriched 10x Chromium Libraries
  - Chimpanzee NOTCH2NL gene analysis on chimpanzee Chromium genome sequencing data
  - NOTCH2NL Simons Samples Coverage Analysis
  - Hominid and Archaic Human Copy Number Analysis
  - Gordian Assembler
  - Establishment of Paratypes in Population
  - Enrichment and Sequencing of Full-Length cDNA
  - Validating H9 Haplotypes Using Full-Length cDNA
  - CRISPR Mutation of *NOTCH2NL* in the H9 ES Line
  - NOTCH2NL Expression in Week 5 Neurospheres
  - Estimate of *NOTCH2* and *NOTCH2NL* Expression in human fetal brain scRNA-Seq data
  - Copy Number Estimates of *NOTCH2NL* in Human Population
  - Paratype Estimation of *NOTCH2NL* in Human Population

- Copy Number Estimates of Microarray 1q21.1 Deletion/Duplication Syndrome Patients

- **QUANTIFICATION AND STATISTICAL ANALYSIS**
- **DATA AND SOFTWARE AVAILABILITY**

## SUPPLEMENTAL INFORMATION

Supplemental Information includes seven figures and five tables and can be found with this article online at <https://doi.org/10.1016/j.cell.2018.03.051>.

## ACKNOWLEDGMENTS

We are grateful to all families participating in the Simons Variation in Individuals Project (Simons VIP), the Simons VIP Consortium, and SFARI base. We thank Frank Nothhaft (Simons Diversity Project), Robert Kuhn, Mark Diekhans, Brain Raney, Hiram Clawson (UCSC Genome Browser), and Raphael Bernier (Simons VIP phenotype data) for assistance with resources; Mari Olsen, Stefany Rubio (Haussler lab), Bari Nazario, Ben Abrams (UCSC Institute for the Biology of Stem Cells), Nader Pourmand (UCSC Genome Sequencing Center), Shana McDevitt (UC Berkeley-QB3 Genomics Sequencing Laboratory), and Martijs Jonker (SILS, University of Amsterdam) for technical support; Arjan Groot and Marc Vooijs (Maastricht Radiation Oncology Lab) for reagents and support for Notch reporter assays; Richard Baldwin (UCSC Anthropology) for providing primate skulls; Pierre Vanderhaeghen, Bin Chen, Benedict Paten, Ed Green, and the Haussler and Jacobs labs for helpful discussions and manuscript comments. This work was supported by CIRM Predoctoral T3-00006 (A.R.F.), EDUC2-08394 (M.M.), and CIRM Postdoctoral TG2-01157 (F.M.J.J.) fellowships; Human Frontier Science Program LT000689/2010-L fellowship and CDA00030/2016C award (F.M.J.J.); ERC starting grant ERC-2016-StG-716035 (F.M.J.J.); NWO Earth and Life Sciences project 834.12.003; EMBO ALTF 292-2011 (M.H.); a fellowship from Edward Schukak (A.D.E.); NIH HG002385 (E.E.E.); NIH F30HG009478 (M.L.D.); CIRM GC1R-06673-A; CIRM GC1R-06673-B; NIH R01 GM109031, U41HG002371, and U54HG007990 (D.H.); NCI Cloud award fund #24074-443720 (D.H.); NIST/JIMB training program (A.B.); and the California QB3 Institute. D.H. and E.E.E. are Howard Hughes Medical Institute Investigators.

## AUTHOR CONTRIBUTIONS

Conceptualization, D.H., S.R.S., F.M.J.J., and I.T.F.; Methodology, I.T.F., S.R.S., D.H., M.M., A.D.E., G.L.M., A.Bi., A.M.N., and F.M.J.J.; Validation, M.L.D. and X.N.; Investigation, G.A.L., M.M., G.L.M., A.v.d.B., J.L.R., A.R.F., L.R., T.J.N., and A.A.P.; Formal Analysis, I.T.F., A.D.E., A.M.N., A.Bh., R.L.-R., A.Bi., M.L.D., X.N., and S.K.; Resources, T.J.N., A.A.P., M.-C.A., S.Z., E.E.E., and A.K.; Data Curation, I.T.F., C.M.B., and G.A.L.; Writing – Original Draft, D.H., I.T.F., G.A.L., F.M.J.J., and S.R.S.; Writing – Review & Editing, D.H., I.T.F., G.A.L., F.M.J.J., S.R.S., C.M.B., A.D.E., G.L.M., A.R.F., M.H., T.J.N., A.A.P., M.L.D., and X.N.; Visualization, I.T.F., G.A.L., G.L.M., A.M.N., and M.H.; Supervision, A.K., E.E.E., S.R.S., F.M.J.J., and D.H.; Project Administration, D.H., S.R.S., and F.M.J.J.; Funding Acquisition, D.H., F.M.J.J., and E.E.E.

## DECLARATION OF INTERESTS

The authors declare no competing interests.

Received: November 15, 2017

Revised: February 16, 2018

Accepted: March 21, 2018

Published: May 31, 2018

## REFERENCES

- Bailey, J.A., and Eichler, E.E. (2006). Primate segmental duplications: crucibles of evolution, diversity and disease. *Nat. Rev. Genet.* 7, 552–564.
- Bernier, R., Steinman, K.J., Reilly, B., Wallace, A.S., Sherr, E.H., Pojman, N., Mefford, H.C., Gerds, J., Earl, R., Hanson, E., et al.; Simons VIP consortium

- (2016). Clinical phenotype of the recurrent 1q21.1 copy-number variant. *Genet. Med.* **18**, 341–349.
- Boareto, M., Iber, D., and Taylor, V. (2017). Differential interactions between Notch and ID factors control neurogenesis by modulating Hes factor autoregulation. *Development* **144**, 3465–3474.
- Brunetti-Pierri, N., Berg, J.S., Scaglia, F., Belmont, J., Bacino, C.A., Sahoo, T., Lalani, S.R., Graham, B., Lee, B., Shinawi, M., et al. (2008). Recurrent reciprocal 1q21.1 deletions and duplications associated with microcephaly or macrocephaly and developmental and behavioral abnormalities. *Nat. Genet.* **40**, 1466–1471.
- Byrne, A., Beaudin, A.E., Olsen, H.E., Jain, M., Cole, C., Palmer, T., DuBois, R.M., Forsberg, E.C., Akeson, M., and Vollmers, C. (2017). Nanopore long-read RNAseq reveals widespread transcriptional variation among the surface receptors of individual B cells. *Nat. Commun.* **8**, 16027.
- Charrier, C., Joshi, K., Coutinho-Budd, J., Kim, J.E., Lambert, N., de Marchena, J., Jin, W.L., Vanderhaeghen, P., Ghosh, A., Sassa, T., and Polleux, F. (2012). Inhibition of SRGAP2 function by its human-specific paralogs induces neoteny during spine maturation. *Cell* **149**, 923–935.
- Cheng, W., Su, Y., and Xu, F. (2013). CHD1L: a novel oncogene. *Mol. Cancer* **12**, 170.
- Cheng, Z., Ventura, M., She, X., Khaitovich, P., Graves, T., Osoegawa, K., Church, D., DeJong, P., Wilson, R.K., Pääbo, S., et al. (2005). A genome-wide comparison of recent chimpanzee and human segmental duplications. *Nature* **437**, 88–93.
- Dennis, M.Y., Nuttle, X., Sudmant, P.H., Antonacci, F., Graves, T.A., Nefedov, M., Rosenfeld, J.A., Sajjadian, S., Malig, M., Kotkiewicz, H., et al. (2012). Evolution of human-specific neural SRGAP2 genes by incomplete segmental duplication. *Cell* **149**, 912–922.
- Dennis, M.Y., and Eichler, E.E. (2016). Human adaptation and evolution by segmental duplication. *Curr. Opin. Genet. Dev.* **41**, 44–52.
- Dobin, A., Davis, C.A., Schlesinger, F., Drenkow, J., Zaleski, C., Jha, S., Batut, P., Chaisson, M., and Gingeras, T.R. (2013). STAR: ultrafast universal RNA-seq aligner. *Bioinformatics* **29**, 15–21.
- Dougherty, M.L., Nuttle, X., Penn, O., Nelson, B.J., Huddleston, J., Baker, C., Harshman, L., Duyzend, M.H., Ventura, M., Antonacci, F., et al. (2017). The birth of a human-specific neural gene by incomplete duplication and gene fusion. *Genome Biol.* **18**, 49.
- Duan, Z., Li, F.Q., Wechsler, J., Meade-White, K., Williams, K., Benson, K.F., and Horwitz, M. (2004). A novel notch protein, N2N, targeted by neutrophil elastase and implicated in hereditary neutropenia. *Mol. Cell. Biol.* **24**, 58–70.
- Duering, M., Karpinska, A., Rosner, S., Hopfner, F., Zechmeister, M., Peters, N., Kremmer, E., Haffner, C., Giese, A., Dichgans, M., and Opherk, C. (2011). Co-aggregate formation of CADASIL-mutant NOTCH3: a single-particle analysis. *Hum. Mol. Genet.* **20**, 3256–3265.
- Eiraku, M., Watanabe, K., Matsuo-Takasaki, M., Kawada, M., Yonemura, S., Matsumura, M., Wataya, T., Nishiyama, A., Muguruma, K., and Sasai, Y. (2008). Self-organized formation of polarized cortical tissues from ESCs and its active manipulation by extrinsic signals. *Cell Stem Cell* **3**, 519–532.
- Florio, M., Albert, M., Taverna, E., Namba, T., Brandl, H., Lewitus, E., Haffner, C., Sykes, A., Wong, F.K., Peters, J., et al. (2015). Human-specific gene ARHGAP11B promotes basal progenitor amplification and neocortex expansion. *Science* **347**, 1465–1470.
- Auton, A., Brooks, L.D., Durbin, R.M., Garrison, E.P., Kang, H.M., Korbel, J.O., Marchini, J.L., McCarthy, S., McVean, G.A., and Abecasis, G.R.; 1000 Genomes Project Consortium (2015). A global reference for human genetic variation. *Nature* **526**, 68–74.
- Girirajan, S., Dennis, M.Y., Baker, C., Malig, M., Coe, B.P., Campbell, C.D., Mark, K., Vu, T.H., Alkan, C., Cheng, Z., et al. (2013). Refinement and discovery of new hotspots of copy-number variation associated with autism spectrum disorder. *Am. J. Hum. Genet.* **92**, 221–237.
- Groot, A.J., Habets, R., Yahyanejad, S., Hodin, C.M., Reiss, K., Saftig, P., Theys, J., and Vooijs, M. (2014). Regulated proteolysis of NOTCH2 and NOTCH3 receptors by ADAM10 and presenilins. *Mol. Cell. Biol.* **34**, 2822–2832.
- Habets, R.A., Groot, A.J., Yahyanejad, S., Tiyant, K., Blacklow, S.C., and Vooijs, M. (2015). Human NOTCH2 Is Resistant to Ligand-independent Activation by Metalloprotease Adam17. *J. Biol. Chem.* **290**, 14705–14716.
- Haldeman-Englert, C.R., and Jewett, T. (1993). 1q21.1 Recurrent Microdeletion. In *GeneReviews*, M.P. Adam, H.H. Ardinger, R.A. Pagon, S.E. Wallace, L.J.H. Bean, H.C. Mefford, K. Stephens, A. Amemiya, and N. Ledbetter, eds. (Seattle, WA: University of Washington, Seattle).
- Hansen, D.V., Lui, J.H., Parker, P.R., and Kriegstein, A.R. (2010). Neurogenic radial glia in the outer subventricular zone of human neocortex. *Nature* **464**, 554–561.
- Holloway, R., Broadfield, D., and Yuan, M. (2004). In THE HUMAN FOSSIL RECORD, Volume Three: Brain Endocasts-The Paleoneurological Evidence, *Volume 3* (Hoboken, NJ: John Wiley & Sons).
- International Schizophrenia Consortium (2008). Rare chromosomal deletions and duplications increase risk of schizophrenia. *Nature* **455**, 237–241.
- Jain, M., Fiddes, I.T., Miga, K.H., Olsen, H.E., Paten, B., and Akeson, M. (2015). Improved data analysis for the MinION nanopore sequencer. *Nat. Methods* **12**, 351–356.
- Karlström, H., Beatus, P., Dannaeus, K., Chapman, G., Lendahl, U., and Lundkvist, J. (2002). A CADASIL-mutated Notch 3 receptor exhibits impaired intracellular trafficking and maturation but normal ligand-induced signaling. *Proc. Natl. Acad. Sci. USA* **99**, 17119–17124.
- Langmead, B., and Salzberg, S.L. (2012). Fast gapped-read alignment with Bowtie 2. *Nat. Methods* **9**, 357–359.
- Lazaridis, I., Patterson, N., Mittnik, A., Renaud, G., Mallick, S., Kirsanow, K., Sudmant, P.H., Schraiber, J.G., Castellano, S., Lipson, M., et al. (2014). Ancient human genomes suggest three ancestral populations for present-day Europeans. *Nature* **513**, 409–413.
- Love, M.I., Huber, W., and Anders, S. (2014). Moderated estimation of fold change and dispersion for RNA-seq data with DESeq2. *Genome Biol.* **15**, 550.
- Lui, J.H., Hansen, D.V., and Kriegstein, A.R. (2011). Development and evolution of the human neocortex. *Cell* **146**, 18–36.
- Macé, A., Tuke, M.A., Deelen, P., Kristiansson, K., Mattsson, H., Nöukas, M., Sapkota, Y., Schick, U., Porcu, E., Rieger, S., et al. (2017). CNV-association meta-analysis in 191,161 European adults reveals new loci associated with anthropometric traits. *Nat. Commun.* **8**, 744.
- Mallik, S., Li, H., Lipson, M., Mathieson, I., Gymrek, M., Racimo, F., Zhao, M., Chennagiri, N., Nordenfeldt, S., Tandon, A., et al. (2016). The Simons Genome Diversity Project: 300 genomes from 142 diverse populations. *Nature* **538**, 201–206.
- Mefford, H.C., Sharp, A.J., Baker, C., Itsara, A., Jiang, Z., Buysse, K., Huang, S., Maloney, V.K., Crolla, J.A., Baralle, D., et al. (2008). Recurrent rearrangements of chromosome 1q21.1 and variable pediatric phenotypes. *N. Engl. J. Med.* **359**, 1685–1699.
- Meyer, M., Kircher, M., Gansauge, M.T., Li, H., Racimo, F., Mallick, S., Schraiber, J.G., Jay, F., Prüfer, K., de Filippo, C., et al. (2012). A high-coverage genome sequence from an archaic Denisovan individual. *Science* **338**, 222–226.
- Mi, H., Huang, X., Muruganujan, A., Tang, H., Mills, C., Kang, D., and Thomas, P.D. (2017). PANTHER version 11: expanded annotation data from Gene Ontology and Reactome pathways, and data analysis tool enhancements. *Nucleic Acids Res.* **45** (D1), D183–D189.
- Molnár, Z., Métin, C., Stoykova, A., Tarabykin, V., Price, D.J., Francis, F., Meyer, G., Dehay, C., and Kennedy, H. (2006). Comparative aspects of cerebral cortical development. *Eur. J. Neurosci.* **23**, 921–934.
- Nichols, J.T., Miyamoto, A., Olsen, S.L., D'Souza, B., Yao, C., and Weinmaster, G. (2007). DSL ligand endocytosis physically dissociates Notch1 heterodimers before activating proteolysis can occur. *J. Cell Biol.* **176**, 445–458.
- Nothhaft, F. (2017). Scalable systems and algorithms for genomic variant analysis. PhD thesis (University of California at Berkeley).

- Nowakowski, T.J., Bhaduri, A., Pollen, A.A., Alvarado, B., Mostajo-Radji, M.A., Di Lullo, E., Haeussler, M., Sandoval-Espinosa, C., Liu, S.J., Velmeshev, D., et al. (2017). Spatiotemporal gene expression trajectories reveal developmental hierarchies of the human cortex. *Science* 358, 1318–1323.
- Nuttle, X., Giannuzzi, G., Duyzend, M.H., Schraiber, J.G., Narvaiza, I., Sudmant, P.H., Penn, O., Chiatante, G., Malig, M., Huddleston, J., et al. (2016). Emergence of a *Homo sapiens*-specific gene family and chromosome 16p11.2 CNV susceptibility. *Nature* 536, 205–209.
- Nuttle, X., Huddleston, J., O’Roak, B.J., Antonacci, F., Fichera, M., Romano, C., Shendure, J., and Eichler, E.E. (2013). Rapid and accurate large-scale genotyping of duplicated genes and discovery of interlocus gene conversions. *Nat. Methods* 10, 903–909.
- O’Bleness, M., Searles, V.B., Varki, A., Gagneux, P., and Sikela, J.M. (2012). Evolution of genetic and genomic features unique to the human lineage. *Nat. Rev. Genet.* 13, 853–866.
- Peng, Y., Leung, H.C., Yiu, S.M., and Chin, F.Y. (2012). IDBA-UD: a de novo assembler for single-cell and metagenomic sequencing data with highly uneven depth. *Bioinformatics* 28, 1420–1428.
- Pollen, A.A., Nowakowski, T.J., Chen, J., Retallack, H., Sandoval-Espinosa, C., Nicholas, C.R., Shuga, J., Liu, S.J., Oldham, M.C., Diaz, A., et al. (2015). Molecular identity of human outer radial glia during cortical development. *Cell* 163, 55–67.
- Popesco, M.C., Maclaren, E.J., Hopkins, J., Dumas, L., Cox, M., Meltesen, L., McGavran, L., Wyckoff, G.J., and Sikela, J.M. (2006). Human lineage-specific amplification, selection, and neuronal expression of DUF1220 domains. *Science* 313, 1304–1307.
- Prüfer, K., de Filippo, C., Grote, S., Mafessoni, F., Korlević, P., Hajdinjak, M., Vernot, B., Skov, L., Hsieh, P., Peyrégne, S., et al. (2017). A high-coverage Neanderthal genome from Vindija Cave in Croatia. *Science* 358, 655–658.
- Prüfer, K., Racimo, F., Patterson, N., Jay, F., Sankararaman, S., Sawyer, S., Heinze, A., Renaud, G., Sudmant, P.H., de Filippo, C., et al. (2014). The complete genome sequence of a Neanderthal from the Altai Mountains. *Nature* 505, 43–49.
- Quinlan, A.R., and Hall, I.M. (2010). BEDTools: a flexible suite of utilities for comparing genomic features. *Bioinformatics* 26, 841–842.
- Rabouille, C. (2017). Pathways of Unconventional Protein Secretion. *Trends Cell Biol.* 27, 230–240.
- Ramsay, L., Marchetto, M.C., Caron, M., Chen, S.-H., Busche, S., Kwan, T., Pastinen, T., Gage, F.H., and Bourque, G. (2017). Conserved expression of transposon-derived non-coding transcripts in primate stem cells. *BMC Genomics* 18, 214.
- Rosenfeld, J.A., Traylor, R.N., Schaefer, G.B., McPherson, E.W., Ballif, B.C., Klopocki, E., Mundlos, S., Shaffer, L.G., and Aylsworth, A.S.; 1q21.1 Study Group (2012). Proximal microdeletions and microduplications of 1q21.1 contribute to variable abnormal phenotypes. *Eur. J. Hum. Genet.* 20, 754–761.
- Stankiewicz, P., and Lupski, J.R. (2010). Structural variation in the human genome and its role in disease. *Annu. Rev. Med.* 61, 437–455.
- Steinberg, K.M., Schneider, V.A., Graves-Lindsay, T.A., Fulton, R.S., Agarwala, R., Huddleston, J., Shiryev, S.A., Morgulis, A., Surti, U., Warren, W.C., et al. (2014). Single haplotype assembly of the human genome from a hydatidiform mole. *Genome Res.* 24, 2066–2076.
- Suzuki, I.K., Gacquer, D., Van Heurck, R., Kumar, D., Wojno, M., Bilheu, A., Herpoel, A., Lambert, N., Cheron, J., Polleux, F., et al. (2018). Human-specific *NOTCH2NL* genes expand cortical neurogenesis through Delta/Notch regulation. *Cell* 173, this issue, 1370–1384.
- Szamalek, J.M., Goidts, V., Cooper, D.N., Hameister, H., and Kehrer-Sawatzki, H. (2006). Characterization of the human lineage-specific pericentric inversion that distinguishes human chromosome 1 from the homologous chromosomes of the great apes. *Hum. Genet.* 120, 126–138.
- Van Dijck, A., van der Werf, I.M., Reyniers, E., Scheers, S., Azage, M., Siefkas, K., Van der Aa, N., Lacroix, A., Rosenfeld, J., Argiropoulos, B., et al. (2015). Five patients with a chromosome 1q21.1 triplication show macrocephaly, increased weight and facial similarities. *Eur. J. Med. Genet.* 58, 503–508.
- Varki, A., Geschwind, D.H., and Eichler, E.E. (2008). Explaining human uniqueness: genome interactions with environment, behaviour and culture. *Nat. Rev. Genet.* 9, 749–763.
- Ying, Q.L., Stavridis, M., Griffiths, D., Li, M., and Smith, A. (2003). Conversion of embryonic stem cells into neuroectodermal precursors in adherent monoculture. *Nat. Biotechnol.* 21, 183–186.
- Zerbino, D.R., Johnson, N., Juettemann, T., Wilder, S.P., and Flicek, P. (2014). WiggleTools: parallel processing of large collections of genome-wide datasets for visualization and statistical analysis. *Bioinformatics* 30, 1008–1009.

## STAR★METHODS

## KEY RESOURCES TABLE

Reagent or Resource	Source	Identifier
<b>Antibodies</b>		
Rabbit anti-HA	Abcam	Cat#ab9110
Mouse anti-Myc	Abcam	Cat#ab9E10
Rabbit anti-Myc	Abcam	Cat#ab9106
Rabbit anti-His	Abcam	Cat#ab9108
Rabbit anti-NOTCH2	SCBT	Cat#sc25-255
Goat anti-Rabbit-HRP	ThermoFisher	Cat#65-6120
Goat anti-Mouse-HRP	ThermoFisher	Cat#62-6520
Rat anti-CTIP2/BCL11B	Abcam	Cat#ab18465
Mouse anti-PAX6	DSHB	Cat#Pax6
Rabbit anti-TBR1	Millipore	Cat#AB10554
Rabbit anti-TBR2/EOMES	Abcam	Cat#ab23345
Rabbit anti-SOX2	Abcam	Cat#ab97959
Rabbit anti-CTIP2	Abcam	Cat#ab28448
Donkey anti-Rabbit Alexa488	ThermoFisher	Cat#R37118
Donkey anti-Mouse Alexa488	ThermoFisher	Cat#R37114
Goat anti-Rabbit Cy3	Jackson	Cat#111-165-144
Goat anti-Rat Cy3	Jackson	Cat#112-165-143
<b>Chemical, Peptides and Recombinant Proteins</b>		
FGF2	Peptotech	Cat#100-18B
Noggin	R&D Systems	Cat#3344-ng
DKK-1	Preprotech	Cat#120-30
SB431542	Sigma	Cat#S4317-5mg
Cyclopamine V. californicum	VWR	Cat#239803-1mg
Dorsomorphin	Sigma	Cat#P5499
IWR-1-Endo	Sigma	Cat#681669 EMD MILLIPORE
EGF	R&D Systems	Cat#236-EG-01M
Polyethylenimine	Polysciences	Cat#23966-1
Dibenzazepine	Sigma	Cat#SML0649-5MG
rDLL4	R&D Systems	Cat#1506-D4-050/CF
<b>Critical Commercial Assays</b>		
OneStep RT-PCR kit	QIAGEN	Cat#210212
RNA Clean & Concentrator	Zymo	Cat#R1013
DynabeadsmRNA DIRECTMicro Purification Kit	ThermoFisher	Cat#61021
Ribo-Zero rRNA removal kit	Epicenter	MRZH11124
TruSeq DNA Sample Preparation kit	Illumina	FC-121-1001
Ion Total RNA-Seq Kit v2	ThermoFisher	Cat#4475936
Ion XpressRNA-Seq Barcode 1-16 Kit	ThermoFisher	Cat#4475485
Chromium WGS kit V2	10X Genomics	120258
Custom MyBaits-3 oligo kit	Mycroarray	Mybaits 3-12
Kapa HiFi Library Amplification Kit (Illumina)	Kapa	KK2621
Xfect DNA transfection reagent	Clontech	631317
Zymo Quick-gDNA Miniprep kit	Zymo	D3006
Dual Luciferase Reporter assay system	Promega	Cat#E1960

(Continued on next page)



**Continued**

Reagent or Resource	Source	Identifier
<b>Deposited Data</b>		
Wild type H9 hESC cortical organoid time course RNA-Seq data	this study	GEO: GSE106245
Week 4 human H9* WT and NOTCH2NL, and day 6 mouse 46C EV and NOTCH2NL knock in RNA-Seq	this study	GEO: GSE111082
Enriched linked read DNA-Seq on normal samples and H9	this study	SRA: SRP130766
Microarray data from controls and patients	DECIPHER	Control is GEO: GSE44300, patient data contact <a href="https://decipher.sanger.ac.uk/">https://decipher.sanger.ac.uk/</a>
Linked read DNA-Seq on two trios (NA12878/NA12891/NA12892 and NA24385/NA21419/NA24143)	10x Genomics / Genome in a Bottle Consortium (NA12891 and NA12892 data are not publicly available)	<a href="ftp://ftp-trace.ncbi.nlm.nih.gov/giab/ftp/data/">ftp://ftp-trace.ncbi.nlm.nih.gov/giab/ftp/data/</a>
Enriched linked read DNA-Seq on Simons VIP samples	Simons Foundation	SFARIbase: SFARI_SVIP_VSV_1
NA12878 Sequencing Data	Illumina Platinum Genomes	SRA: ERR194147
Vindija Neanderthal Sequencing Data	<a href="https://doi.org/10.1126/science.aao1887">https://doi.org/10.1126/science.aao1887</a>	SRA: PRJEB21157
Altai Neanderthal Sequencing Data	<a href="https://doi.org/10.1038/nature12886">https://doi.org/10.1038/nature12886</a>	SRA: PRJEB1265
Denisovan Sequencing Data	<a href="https://doi.org/10.1126/science.1224344">https://doi.org/10.1126/science.1224344</a>	SRA: ERP001519
Chimpanzee Sequencing Data	University of Nebraska - Non Human Primate Genomics Center (UN-NHPGC)	SRA: SRP012268
Gorilla Sequencing Data	<a href="https://doi.org/10.1371/journal.pone.0065066">https://doi.org/10.1371/journal.pone.0065066</a>	SRA: PRJEB2590
Orangutan Sequencing Data	<a href="https://doi.org/10.1038/nature12228">https://doi.org/10.1038/nature12228</a>	SRA: SRR748005
Human Fetal brain scRNA-seq data	<a href="https://doi.org/10.1126/science.aap8809">https://doi.org/10.1126/science.aap8809</a>	dbGAP: phs000989.v3
<b>Experimental Models: Cell lines</b>		
H9 hESC	WiCell	Cat#WA09
HEK293T	ATCC	Cat#CRL-3216
46C mESC	Austin Smith	Cat#46C
U2OS	Marc Vooijs	N/A
U2OS-JAG2	Marc Vooijs	N/A
OP9	Bianca Blom	N/A
OP9-DLL1	Bianca Blom	N/A
8919 Chimp iPSC	<a href="https://doi.org/10.1101/232553">https://doi.org/10.1101/232553</a>	N/A
00053 Gorilla iPSC	Carol Marchetto and Fred Gage	N/A
NA19240 LCL	Coriell	GM19240
NA12877	Coriell	GM12877
CHM1hTERT	Dr. Urvasi Surti, Magee-Womens Hospital	N/A
SV721	<a href="http://sfari.org">sfari.org</a>	N/A
SV735	<a href="http://sfari.org">sfari.org</a>	N/A
SV770	<a href="http://sfari.org">sfari.org</a>	N/A
SV780	<a href="http://sfari.org">sfari.org</a>	N/A
SV788	<a href="http://sfari.org">sfari.org</a>	N/A
SV877	<a href="http://sfari.org">sfari.org</a>	N/A

(Continued on next page)

**Continued**

Reagent or Resource	Source	Identifier
Oligonucleotides		
Refer to <a href="#">Table S5</a>	N/A	N/A
Recombinant DNA		
pX458	Addgene	#48138
pX458-E2.1	This study	N/A
pX4580E5.2	This study	N/A
pCAG-hCas9	Addgene	#51142
pCAG-GFP	Addgene	#11150
pCAG-EV	This study	N/A
pCAG-NOTCH2NL <sup>Sh</sup>	This study	N/A
pCAG-NOTCH2NL <sup>Sh,T1971</sup>	This study	N/A
pCAG-NOTCH2NL <sup>L</sup>	This study	N/A
pCAG-NOTCH2NL <sup>L,T1971</sup>	This study	N/A
pCAG-NOTCH2NL <sup>Sh,+ATAA</sup>	This study	N/A
pCAG-NOTCH2NL <sup>L,T1971,+ATAA</sup>	This study	N/A
pCAG-NOTCH2NL-HA <sup>Sh</sup>	This study	N/A
pCAG-NOTCH2NL-HA <sup>Sh,T1971</sup>	This study	N/A
pCAG-NOTCH2NL-His <sup>Sh</sup>	This study	N/A
pCAG-NOTCH2NL-His <sup>Sh,T1971</sup>	This study	N/A
pCIG2a	Pierre Vanderhaeghen	N/A
pCIG2a-NOTCH2NL <sup>Sh,T1971</sup>	This study	N/A
pCIG2a-NOTCH2-Myc	This study	N/A
pCIG2a-PDGFR-Myc	This study	N/A
pCIG2a-EGFR-Myc	This study	N/A
pRL-CMV	Promega	E2231
pGL3-UAS	Marc Vooijs	N/A
pcDNA5-NOTCH1-GAL4-TAD-N1	Marc Vooijs	N/A
pcDNA5-NOTCH2-GAL4-TAD-N1	Marc Vooijs	N/A
pLVX-NOTCH3-GAL4GV16	Marc Vooijs	N/A
Software and Algorithms		
Bowtie2	<a href="https://doi.org/10.1038/nmeth.1923">https://doi.org/10.1038/nmeth.1923</a>	<a href="http://bowtie-bio.sourceforge.net/bowtie2/index.shtml">http://bowtie-bio.sourceforge.net/bowtie2/index.shtml</a>
STAR	<a href="https://doi.org/10.1093/bioinformatics/bts635">https://doi.org/10.1093/bioinformatics/bts635</a>	<a href="https://github.com/alexdobin/STAR">https://github.com/alexdobin/STAR</a>
bedtools	<a href="https://doi.org/10.1093/bioinformatics/btq033">https://doi.org/10.1093/bioinformatics/btq033</a>	<a href="https://github.com/arq5x/bedtools2">https://github.com/arq5x/bedtools2</a>
DESeq2	<a href="https://doi.org/10.1186/s13059-014-0550-8">https://doi.org/10.1186/s13059-014-0550-8</a>	<a href="https://bioconductor.org/packages/release/bioc/html/DESeq2.html">https://bioconductor.org/packages/release/bioc/html/DESeq2.html</a>
trimmomatic	<a href="https://doi.org/10.1093/bioinformatics/btu170">https://doi.org/10.1093/bioinformatics/btu170</a>	<a href="http://www.usadellab.org/cms/?page=trimmomatic">http://www.usadellab.org/cms/?page=trimmomatic</a>
htseq-count	N/A	<a href="http://htseq.readthedocs.io/en/master/count.html">http://htseq.readthedocs.io/en/master/count.html</a>
Panther V13.0	N/A	<a href="http://www.pantherdb.org/panther/ontologies.jsp">http://www.pantherdb.org/panther/ontologies.jsp</a>
Longranger	<a href="https://doi.org/10.1101/230946">https://doi.org/10.1101/230946</a>	<a href="https://support.10xgenomics.com/genome-exome/software/downloads/latest">https://support.10xgenomics.com/genome-exome/software/downloads/latest</a>
Microarray copy number inference	This study	<a href="https://bitbucket.org/adam_novak/copynumber">https://bitbucket.org/adam_novak/copynumber</a>
Gordian assembler downstream analysis scripts and enriched linked read normalization	This study	<a href="https://github.com/vrubels/Notch2NL-Project">https://github.com/vrubels/Notch2NL-Project</a>
Gordian Assembler	This study	<a href="https://github.com/abishara/gordian_assembler">https://github.com/abishara/gordian_assembler</a>

## CONTACT FOR REAGENT AND RESOURCE SHARING

Further information and requests for resources and reagents should be directed to and will be fulfilled by the Lead Contact, David Haussler ([haussler@soe.ucsc.edu](mailto:haussler@soe.ucsc.edu)).

## EXPERIMENTAL MODEL AND SUBJECT DETAILS

### Mouse cell culture

Mouse 46C ESCs (Ying et al., 2003) were obtained from Austin Smith and cultured, on 0.1% gelatin coated plates in GMEM (ThermoFisher) with 10% HIFBS, 2 mM L-Glutamine, 1x NEAA, 1x NaPyr, 100  $\mu$ M 2-mercaptoethanol and 1x P/S. ESGRO LIF (Millipore) was added fresh daily. Phenotypic analysis confirmed the presence of the Sox1-GFP reporter in this cell line.

### Human cell culture

#### H9 embryonic stem cells

H9 human embryonic stem cells (female, WA09, WiCell), were cultured in W0 medium: DMEM/F12 (ThermoFisher) with 20% KnockOut serum replacement (KOSR, ThermoFisher), 2 mM L-glutamine (ThermoFisher), 1x non-essential amino acids (NEAA, ThermoFisher), 100  $\mu$ M 2-mercaptoethanol (ThermoFisher) and 1x P/S (ThermoFisher). W0 was freshly supplemented daily with 8 ng/ml FGF2 (Sigma). H9 hESCs (WA09, WiCell Research Institute) were grown on MEF feeder layers, and manually passaged every 5-6 days when colonies reached approximately 2 mm in diameter. Mitomycin-C treated mouse embryonic fibroblasts (MEFs, GlobalStem) were seeded on 0.1% gelatin coated plates at a density of 35,000 cell/cm<sup>2</sup>. MEFs were cultured in DMEM, 4.5 g/l glucose + GlutaMax (ThermoFisher), 10% heat inactivated fetal bovine serum (HIFBS, ThermoFisher), 1x Penicillin/Streptomycin (P/S, ThermoFisher) and 1x sodium pyruvate (NaPyr, ThermoFisher). Karyotype of our H9 culture was confirmed by Cell Line Genetics before initiating CRISPR experiments.

#### Human cell lines for HMW genomic DNA isolation

Lymphoblastoid cell lines representing NA19240, NA12877 were obtained from Coriell ([coriell.org](http://coriell.org)). The CHM1hTert hydantidiform cell lines was kindly provided by Dr. Urvashi Surti of the Magee-Womens Hospital and Magee-Womens Research Institute. Primary fibroblasts derived from individuals with 1q21.1 CNV were obtained from the Simon's VIP collection ([www.sfari.org/resources/simons-vip/](http://www.sfari.org/resources/simons-vip/)). Lymphoblastoid cell lines were grown as suspension cultures in RPMI media (ThermoFisher) with GlutaMax (ThermoFisher) and 10% Gibco fetal bovine serum (FBS, ThermoFisher) as recommended by Coriell. Primary fibroblasts were grown as adherent cultures in MEM Alpha with nucleic acids (ThermoFisher) with 10% Gibco FBS (ThermoFisher) and 1% Pen-Strep (ThermoFisher). CHM1 was grown as adherent cultures in Amnio-MAX C-100 Basal Medium (17001-074, ThermoFisher) with Amnio-MAX C-100 Supplement (12556-023, ThermoFisher). The human samples/data used in this study were determined to be exempt from UCSC IRB review because they were de-identified and part of an IRB-approved study that gave consent for additional research of the type we performed.

#### HEK293T cells

HEK293T (ATCC) cells were cultured according to standard protocol in DMEM, 4.5 g/l glucose + GlutaMax, 10% HIFBS and 1x P/S. For co-IP experiments, HEK293T cells were transfected in T25 flasks at 50% confluency.

### NOTCH reporter cell line culture

U2OS cells and U2OS-JAG2 (Myc-tagged) cells (gifts of Arjan Groot and Marc Vooijs, MAASTRO lab, Maastricht University) were cultured in DMEM, 4.5 g/l glucose + GlutaMax, 10% HIFBS and 1x P/S. U2OS-JAG2 cells were supplemented with 2  $\mu$ g/ml puromycin. OP9 cells and OP9-DLL1 cells (gifts of Bianca Blom, Academic Medical Center Amsterdam) were cultured in MEM $\alpha$  without nucleosides (ThermoFisher), 2mM L-glutamine, 20% HIFBS, 100  $\mu$ M 2-mercaptoethanol and 1x P/S. For routine culturing, cells were passaged every 3-4 days using 0.25% Trypsin (ThermoFisher) + 0.5 mM EDTA (Sigma) in PBS at densities of 1/8 to 1/10 (U2OS), or 1/4 to 1/6 (OP9).

### Great ape iPSC cultures

Chimpanzee iPSC line 8919 was generated by an integration-free episomal protocol by Applied StemCell (Menlo Park, CA) from S008919 primary fibroblasts (Yerkes Primates, Coriell) as described in Field, et. al., bioRxiv 232553; doi: <https://doi.org/10.1101/232553>. Normal 48/XX karyotype was confirmed through passage 32 by Cell Line Genetics or the Coriell Institute for Medical Research. A male Gorilla iPSC line, 00053-cA3, was a gift from Carol Marchetto and Fred Gage and is described in (Ramsay et al., 2017). No validation of this line was done in our lab. Chim and gorilla iPSCs were maintained under feeder free conditions on Matrigel (Corning) with mTeSR-1 (STEMCELL Technologies).

## METHOD DETAILS

### Mouse ESC stable cell line generation and organoid differentiation

To generate stable cell lines, 46C cells seeded on 100 mm plates and were transfected with 24  $\mu$ g of linearized pCIG-NOTCH2NL<sup>Sh,T1971</sup>-ires-GFP or empty pCIG-ires-GFP vector, using lipofectamine 2000 (ThermoFisher). After 36 hours, GFP-positive

cells were sorted using a FACSaria III (BD Biosciences) and recovered for further culturing. After 4 passages sorting was repeated and GFP-positive cells that had stably integrated the plasmid DNA in their genome were recovered for expansion and further culturing. We verified continued stable expression of NOTCH2NL<sup>Sh,T1971</sup>-ires-GFP or empty vector (Figure S4). Mouse 46C ESC organoid differentiation was performed as described previously (Eiraku et al., 2008). Briefly, cells were seeded in ultra low attachment U-shaped 96 wells plates (Corning) at 6000 cells per well. Cells were in mouse ESC medium without LIF and supplemented with 3  $\mu$ M IWR-1-Endo (Sigma) and 10  $\mu$ M SB431542 (Sigma). Medium was replaced every other day. At day 7, medium was changed to Neurobasal/N2 medium. Three pools of 16 organoids were isolated in TRIzol after 6 days of differentiation for EV and NOTCH2NL<sup>Sh,T1971</sup> organoids.

### Human cortical organoid differentiation

For organoid differentiation, medium was replaced with W0 medium + 1x NaPyr without FGF2 (Differentiation medium). Colonies of 2-3 mm in diameter were manually lifted using a cell lifter, and transferred to an ultra-low attachment 60mm dish (Corning). After 24 hours (day 0) embryoid bodies had formed, and 50% of medium was replaced with Differentiation medium supplemented with small molecule inhibitors and recombinant proteins to the following final concentrations: 500 ng/ml DKK1 (peprotech), 500 ng/ml NOGGIN (R&D Systems), 10  $\mu$ M SB431542 (Sigma) and 1  $\mu$ M Cyclopamine V. californicum (VWR). Medium was then replaced every other day until harvest. On day 8, organoids were transferred to ultra-low attachment U-shaped bottom 96 well plates (Corning). On day 18, medium was changed to Neurobasal/N2 medium: Neurobasal (Thermofisher), 1x N2 supplement (Thermofisher), 2 mM L-Glutamine, 1x P/S, supplemented with 1  $\mu$ M Cyclopamine. From day 26 on, Cyclopamine was not supplemented anymore. Organoids were harvested in TRIzol at weekly time points. Total-transcriptome strand-specific RNA sequencing libraries were generated using dUTP for second strand synthesis on Ribo-zero (Epicenter) depleted total RNA. Double stranded cDNA was used for library preparation following the Low Throughput guidelines of the TruSeq DNA Sample Preparation kit (Illumina). For organoid formation of H9 hESC CRISPR/Cas9 NOTCH2NL knockout lines, an updated protocol was used: Differentiation medium was supplemented with 10  $\mu$ M SB431542 (Sigma), 1  $\mu$ M Dorsomorphin (Sigma), 3  $\mu$ M IWR-1-Endo (Sigma) and 1  $\mu$ M Cyclopamine (Sigma). Medium was then replaced every other day until harvest. On day 4, 60 mm dishes with organoids were placed on a hi/lo rocker in the incubator. From day 18 on, medium is replaced with Neurobasal/N2 medium. From day 24 on, Cyclopamine was not added anymore. Three pools of 5-10 organoids per condition were harvested in TRIzol at day 28 for RNA extraction.

### RNA-Sequencing Analysis

Paired-end Illumina reads were trimmed from the 3' end of read1 and read2 to 100x100 bp for human. Bowtie2 v2.2.1 (Langmead and Salzberg, 2012) was used with the “-very-sensitive” parameter to filter reads against the RepeatMasker library (<http://www.repeatmasker.org>) which were removed from further analysis. STAR v2.5.1b (Dobin et al., 2013) was used to map RNA-seq reads to the human reference genome GRCh37. STAR was run with the default parameters with the following exceptions: -outFilterMismatchNmax 999, -outFilterMismatchNoverLmax 0.04, -alignIntronMin 20, -alignIntronMax 1000000, and -alignMatesGapMax 1000000. STAR alignments were converted to genomic position coverage with the bedtools command genomeCoverageBed -split (Quinlan and Hall, 2010). DESeq2 v1.14.1 (Love et al., 2014) was used to provide basemean expression values and differential expression analysis across the time course. Total gene coverage for a gene was converted to read counts by dividing the coverage by N+N (100+100) since each paired-end NxN mapped read induces a total coverage of N+N across its genomic positions. Results are in Table S2 and data are available from GEO: GSE106245.

For mouse cortical organoids and H9\* and H9<sup>NOTCH2NL $\Delta$</sup>  organoid samples, RNA was isolated according to standard TRIzol protocol. RNA was treated with DNaseI (Roche) according to standard protocol for DNA clean-up in RNA samples. RNA was then isolated by column purification (Zymo RNA clean & concentrator 5) and stored at -80°C. For RNA sequencing, mRNA was isolated from total RNA using polyA selection Dynabeads mRNA DIRECT Micro Purification Kit (Thermofisher). Library was prepared using strand-specific Ion Total RNA-seq Kit v2 (Thermofisher) and Ion Xpress RNA-seq Barcode 1-16 (Thermofisher) to label different samples. The samples were sequenced on an IonProton system (Thermofisher), generating single-end reads of around 100 bp in length. RNA sequencing data was processed using the Tuxedo package, according the ThermoFisher protocol for IonProton data with the following parameters: Reads were trimmed using trimmomatic (0.36) LEADING:3 TRAILING:3 SLIDINGWINDOW:4:15 MINLEN:25. Then, reads were mapped using STAR (2.4.0) -outStd SAM -outReadsUnmapped Fastx -chimSegmentMin 18 -chimScoreMin 12 and Bowtie2 (2.3.3.1) -local -very-sensitive-local -q -mm, output BAM file per tool were merged. The ENSEMBL hg38 release 84 was used as reference. To generate raw read counts per gene: htseq-count (0.6.1p1) -t exon -i exon\_id -q. DESeq2 (2.11.39, Galaxy) was used to normalize read counts and do pairwise statistical analysis to determine significant differentially expressed genes (p-adj < 0.05). For analysis of mouse data, the same processing was used with the mm10 genome. Results are in Table S2.

For comparison of week 4 H9\* and H9<sup>NOTCH2NL $\Delta$</sup>  organoid data to the previously established H9 organoid timeline, the following procedure was used: The top 250 upregulated and the 250 downregulated genes between week 4 H9\* and H9<sup>NOTCH2NL $\Delta$</sup>  based on p-adj were selected. The matching expression profiles of these 500 genes were extracted from the H9 organoid timeline, yielding 361 genes expressed in both datasets. The expression profiles in week 4 H9\* and H9<sup>NOTCH2NL $\Delta$</sup>  and H9 Week 3, Week 4 and Week 5 were sorted from high to low, and ranked 1 to 361. Then, pairwise comparisons were made between each sample to calculate Spearman's rank correlation between all samples, and plotted using multi-experiment viewer. 212 genes showed shift toward better correlation with Week 5 data in H9<sup>NOTCH2NL $\Delta$</sup>  compared to H9\*. These 212 genes were subjected to GO analysis using Panther V13.0 (Mi et al.,

2017). A selection of genes from the significantly associated term neuron differentiation was plotted in a heatmap. Z-scores were calculated for the different samples of Week 4 H9\* and H9<sup>NOTCH2NL<sup>A</sup></sup>, and H9 Week 3, Week 4 and Week 5.

### Organoid immunofluorescence staining

Organoids were collected in an eppendorf tube and washed 3 times in PBS, then fixed in 3.8% PFA / PBS for 10 minutes. Organoids were washed 3 times in PBS again, following incubation in 30% sucrose / PBS overnight at 4°C. Organoids were embedded in cryomolds with Tissue Freezing Medium (VWR) or Shandon Cryomatrix (ThermoFisher) and stored at -80°C for later use. 16µm cryosections (Leica CM3050S) were captured on SuperFrost plus slides (VWR), and stored at -80°C for later use. For immunostainings, sections were defrosted and washed 3 times 3 minutes in PBS. Sections were post-fixed 10 minutes in 3.8% PFA, followed by 3 washes of 3 minutes in PBS. Blocking solution (3% BSA + 0.1% Triton in PBS) was incubated at room temperature for 3-4 hours. Primary antibodies were diluted 1:1000 in blocking solution and incubated overnight at 4°C. Sections were washed 3 times 5 minutes in PBS, then secondary antibodies diluted 1:1000 in 0.1% Triton / PBS and incubated 1 hour at room temperature. Slides were then washed 3 times 5 minutes with PBS and mounted with SlowFade+DAPI solution (Invitrogen) and stored at 4°C. Alternatively, after secondary antibody incubation, slides were washed 2 times 5 minutes in PBS, followed by DAPI solution incubation of 5 minutes, then washed 2 more times for 5 minutes. 3 drops of FluorSave (MerckMillipore) were added and slides were sealed by coverslips and nailpolish. Imaging was done at least 24 hours after storing the slides at 4°C. Primary antibodies were diluted to the following amounts: anti-SOX2 1:1000, rabbit anti-CTIP2 1:1000, rat anti-CTIP2 1:250, anti-PAX6 1:200, anti-TBR1 1:500. Secondary antibodies were diluted to the following amounts: anti-rabbit 488 1:1000, anti-mouse 488 1:1000, anti-rabbit Cy3 1:1000, anti-rat Cy3 1:1000. Antibody details can be found in the key resource table.

### Co-immunoprecipitation and immunoblot

pCIG-NOTCH2-Myc and pCAG-NOTCH2NL-HA<sup>Sh</sup> + pCAG-NOTCH2NL-HA<sup>L-T1971</sup> were mixed in equimolar ratios and transfected using Lipofectamine 2000 (ThermoFisher). For control conditions, pCIG-EV and pCAG-EV were used in equimolar ratios. 6 hours after transfection, medium was replaced, and another 24 hours later medium was replaced. Cells were harvested 48 hours after transfection. Cells were washed 3 times with cold 1x PBS, then incubated in 40 minutes in IP buffer (50mM Tris-HCl, 150mM NaCl, 5mM MgCl, 0.5mM EDTA, 0.2% NP-40, 5% glycerol, supplemented with cOmplete, EDTA-free protease inhibitor cocktail (Sigma)). Cells were lysed by passing cell suspension through 27<sup>3/4</sup> gauge needle 10 times. Lysate was centrifuged 10 minutes at 4°C, supernatant was transferred to a fresh 1.5ml tube. 2 µg of one specific antibody was added (anti-HA Abcam ab9110, anti-Myc Abcam ab9E10, anti-His Abcam ab9108, anti-NOTCH2 SCBT sc25-255) and incubated overnight at 4°C in a rotating wheel. DynaBeads were blocked using 3 washes of 1x PBS + 0.5% BSA and added to IP samples, incubating 3 hours at 4°C rotating. Using a magnetic separator, samples were washed 2 times in cold IP buffer. Then samples were eluted in Tris-EDTA buffer and transferred to new 1.5ml tubes. 2x Laemmli buffer + DTT was added 1:1 prior to SDS-PAGE. Samples were loaded on 4%–20% Tris glycine gels (Bio-Rad), followed by blotting on nitrocellulose membranes following manufacturer's recommended protocol. Membranes were blocked in 5% skim-milk powder in 1x PBS + 0.05% Tween or 1x TBS + 0.1% Tween. Primary antibodies were incubated 3 hours at room temperature in 1x PBS (anti-NOTCH2 sc25-255) or 1x TBS-T (other antibodies), followed by 3 washes in 1x PBS-T (anti-NOTCH2 sc25-255) or 1x TBS-T (other antibodies). Secondary antibodies (anti-Rabbit-HRP 65-6120, anti-Mouse-HRP 62-6520, ThermoFisher) were incubated 60 minutes at room temperature, followed by 3 more washes in 1x PBS-T or 1x TBS-T. Membranes were incubated with supersignal westdura ECL substrate (ThermoFisher) and imaged using Bio-Rad Chemidoc imager. For experiments with pCAG-NOTCH2NL-His, pCIG-NOTCH2-Myc, pCIG-PDGFRB-Myc and pCIG-EGFR-Myc, the same protocol was used with equimolar mixes of plasmid DNA. For immunoprecipitation of NOTCH2NL<sup>Sh,T1971</sup> from mouse 46c ESCs, the same protocol was used and protein was isolated from medium using the NOTCH2 sc25-255 antibody.

To analyze presence of secreted NOTCH2NL in NOTCH2NL-conditioned medium, the medium was collected after 32 hours, and used for immunoprecipitation with a NOTCH2 antibody specific for the N-terminal region. The isolated protein samples were analyzed by immunoblot, confirming the presence of secreted NOTCH2NL in the medium (Figure 6D). NOTCH2NL<sup>Sh,T1971</sup> is detected in two bands, of which the two bands of NOTCH2NL<sup>Sh</sup> likely may represent the glycosylated form of the protein (higher band) and unmodified protein (lower band). This pattern was also observed in ectopic expression of N-terminal fragments of the NOTCH3 receptor (Duering et al., 2011).

### NOTCH reporter co-culture assays

U2OS cells were seeded at a density of 425,000 cells per well for transfection (6-wells plate). In parallel, U2OS control or U2OS-JAG2 cells were seeded at a density of 110,000 cells per well for co-culture (12-wells plate). After 24 hours, U2OS cells in 6-wells plates were transfected the following amounts of plasmid DNA per well. For control conditions: 500 ng pGL3-UAS, 33.3 ng pRL-CMV, 16.7 ng pCAG-GFP, 200 ng pcDNA5.1-NOTCH2-GAL4, 167 ng pCAG-EV, and 273 ng pBluescript. For conditions including NOTCH2NL:500 ng pGL3-UAS, 33.3 ng pRL-CMV, 16.7 ng pCAG-GFP, 200 ng pcDNA5.1-NOTCH2-GAL4, 200 ng pCAG-NOTCH2NL, and 240 ng pBluescript. Plasmid DNA mix was transfected using polyethylenimine (PEI, linear, MW 25000, Polysciences). All amounts were scaled accordingly for multiple transfections. For larger experiments, cells were seeded and transfected in T25 flasks or on 100 mm plates and amounts used were scaled accordingly to surface area. 6 hours after transfection, 6-wells plates were treated with 0.5 mL of 0.25% Trypsin and 0.5 mM EDTA in PBS per well for 2 minutes at 37 degrees. Cells were resuspended in a

total volume of 7 mL after addition of culture medium. Medium of 12-wells plates was removed, and 1 mL of transfected cell suspension was added to each well for co-culture. 10  $\mu$ M Dibenzazepine (DBZ) was added to selected control wells. After 24 hours, medium was removed and cells washed once with PBS. Cells were incubated in 150  $\mu$ l of 1x passive lysis buffer (PLB, Promega) on an orbital shaker for 15 minutes. Lysates were stored at  $-80^{\circ}\text{C}$  until analysis. In OP9 and OP9-DLL1 co-cultures, 80,000 cells were seeded per well of a 12-wells plate. For generating conditioned medium, U2OS cells were seeded on 100 mm plates, and were PEI transfected with 2000 ng of pCiG-EV, or 2400 ng of NOTCH2NLA or NOTCH2NLB. Another 10000 ng or 9600 ng of pBluescript was used as carrier DNA. 6 hours after transfection, medium was replaced. 32 hours after transfection, medium was collected and 0.2  $\mu$ m filtered and used the same day. The experiments using conditioned medium were done as previously described, but were seeded on 0.25% gelatin, 0.1% BSA coated plates instead. For the reporter U2OS cell transfection, only pCAG-EV, and NOTCH2NL plasmids were not added to the plasmid DNA mix, and replaced by pBluescript. Instead, transfected cells are resuspended and seeded in conditioned medium harvested from other cells. For DLL4 assays, 24-wells plates were coated overnight at  $4^{\circ}\text{C}$  with 150  $\mu$ l of 5  $\mu$ g/ml rDLL4 (R&D Systems), 0.25% gelatin, 0.1% BSA in PBS. Control plates were coated with 0.25% gelatin, 0.1% BSA in PBS only. U2OS cells were transfected and seeded according to co-culture protocol as previously described, except 0.5 mL of cell suspension was used for each well of the coated 24-wells plates. NOTCH-GAL4 and reporter constructs were kindly gifted by Arjan Groot and Marc Vooijs (MAASTRO lab, Maastricht University).

### RT-PCR characterization of primate *NOTCH2NL* fusion genes

For amplification and detection of potential fusion transcripts, QIAGEN OneStep RT-PCR kit was used according to manufacturer's protocol. 25 ng of total RNA isolated from gorilla iPSCs, chimpanzee iPSCs, or human H9 ESCs was used per reaction. Primers used in these reactions were:

N2NL\_Fw1\_exon1: CGCTGGGCTTCGGAGCGTAG  
 N2NL\_Rv2\_exon5: CCAGTGTCTAATTCTCATCG  
 PDE4DIP\_Fw2\_exon24: ACACCATGCTGAGCCTTTGC  
 PDE4DIP\_Fw1\_exon27: AAGGCCAGCTGCAGAATGC  
 MAGI3\_Fw1\_exon1: GGGTTCGGGATGTCGAAGAC  
 MAGI3\_Fw2\_exon10: GCAACTGTGTCCTCGGTCAC  
 MAGI3\_Fw3\_exon14: GGGAGCAGCTGAGAAAGATG  
 TXNIP\_Fw1\_exon1: CAGTTCATCATGGTGATG  
 BRD9\_Fw2\_exon10: ACGCTGGGCTTCAAAGACG  
 BRD9\_Fw1\_exon12: GCAGGAGTTTGTGAAGGATGC

### Oligo capture library generation

To enrich whole-genome sequencing libraries to allow for cost-effective deep sequencing of the *NOTCH2NL* loci, a MYcroarray MyBaits custom oligonucleotide library was developed. 100 bp probes were designed spaced 50 bp apart in chr1:145,750,000-149,950,000, ignoring repeat masked bases, for a total of 20,684 probes. A further 8,728 probes were created in the three *NOTCH2NL* loci by tiling with 50 bp overlaps, ignoring repeat masking but dropping any probes with very low complexity. 17,866 probes were added at every Singly Unique Nucleotide (SUN) position tiling at 5 bp intervals from  $-75$  bp to  $+75$  bp around the SUN. SUN positions are single nucleotide substitutions that are markers for individual paralogs. To try and capture population diversity and ensure even enrichment, at every SNP in the NA12878 Genome In a Bottle variant call set the reference base was replaced and probes tiled in the same fashion as the SUNs. Finally, to reach the required 60,060 probes a random 347 probes were dropped.

### Library Preparation and Enrichment of 10x Chromium Libraries

High molecular weight DNA was processed into Illumina sequencing libraries using the Chromium Genome Reagent Kit V2 chemistry according to the recommended protocol (CG00022 Genome Reagent Kit User Guide RevC) and enriched using the custom MyBaits oligonucleotide probes described above (Figure S1). Briefly, high molecular weight (HMW) gDNA was isolated from cultured cells using a MagAttract kit (QIAGEN) followed by quantification with Qubit. HMW DNA was partitioned inside of an emulsion droplet along with DNA barcode containing gel beads and an amplification reaction mixture. After barcoding the molecules within the emulsion, Illumina sequencing adaptors were added by ligation. In preparation for hybridization with MyBaits probes Illumina adaptor sequences are blocked with complementary oligonucleotides. Biotinylated probes were hybridized overnight at  $65^{\circ}\text{C}$  and isolated using streptavidin coated MyOne C1 beads (Invitrogen). The final enriched libraries were amplified using an Illumina Library Amplification Kit (Kapa).

### Sequencing of Enriched 10x Chromium Libraries

The MYcroarray probes (above) were used to enrich 10x Genomics sequencing libraries for three well studied individuals (NA19240, NA12877 and CHM1), the H9 ESC line, the six Simons VIP samples in Figure 7, and the H9 CRISPR mutants in Figure 5. NA12877 was chosen instead of NA12878 because of the existence of high depth 10x Genomics Chromium whole-genome data for that individual.

We find that around 50% of our reads map to regions of enrichment, leading to > 1000x coverage of the *NOTCH2NL* loci. The NA19240, NA12877 and H9 libraries were sequenced to 65 million reads, 71 million reads, and 107 million reads respectively. The Simons VIP samples SV721, SV877, SV7720, SV780, SV735 and SV788 were sequenced to a depth of 57 million, 30 million, 44 million, 37 million, 86 million and 37 million reads respectively.

### Chimpanzee *NOTCH2NL* gene analysis on chimpanzee Chromium genome sequencing data

Whole genome 10x Genomics Chromium linked read sequencing libraries were generated from high molecular weight DNA isolated from a chimpanzee iPSC line (Epi-8919-1A) derived from S008919 primary fibroblasts (Yerkes Primates, Coriell) and described in Field, et. al., bioRxiv 232553; doi: <https://doi.org/10.1101/232553>. according to the 10x Genomics Protocol (CG00022 Genome Reagent Kit User Guide RevC). PE 150bp Illumina sequencing was done on a HiSeq4000 producing 1.6 billion reads. Reads were processed using Longranger and aligned to hg38. Reads aligned to chr1:119,989,248-120,190,000, chr1:149,328,818-149,471,561, chr1:148,600,079-148,801,427, chr1:146,149,145-146,328,264, or chr1:120,705,669-120,801,220 were extracted and their barcodes recorded. All reads from these barcodes were extracted and realigned to a chimp BAC-derived consensus *NOTCH2NL* sequence using bwa, variants were called with freebayes command “freebayes -f n2nlConsensus.fa -ploidy 10 -min-alternate-fraction 0.05 -k -j -min-coverage 50 -i -u -0 consensus\_mapped.sorted.bam,” and then sequences were assembled with Gordian Assembler. Scaffold and assembly hubs were made to visualize these assemblies, as shown in the Github at <https://github.com/vrubels/Notch2NL-Project>.

### *NOTCH2NL* Simons Samples Coverage Analysis

To assess copy number change in the Simons VIP 1q21.1 collection, the H9, NA12877 and NA19240 enriched 10x Chromium libraries described above were mapped to GRCh38 using Longranger 2.1.3. bamCoverage was used to extract all reads that mapped to the region chr1:142785299-150598866, normalizing depth to 1x coverage across the region to account for library depth. Wiggletools mean (Zerbino et al., 2014) was used to average the depth across these samples. Wiggletools was then used to perform a ratio of this average with the coverages of every Simons 1q21.1 collection sample, which simultaneously normalizes out bias from the array enrichment as well as GC content. These coverages were then re-scaled by the average coverage in the region chr1:149,578,286-149,829,369, which is downstream of *NOTCH2NL* and not observed to have copy number change. This rescaling adjusts for a systematic shift downward caused by the combination of the previous normalizations seen in deletion samples, and a similar shift upward in duplication samples. Finally, sliding midpoint smoothing was applied to each coverage track, taking into account missing data by ignoring it and expanding the window size symmetrically around a midpoint to always include 100,000 datapoints, stepping the midpoint 10 kb each time.

### Hominid and Archaic Human Copy Number Analysis

Sequencing data for NA12878 (ERR194147), Vindija Neanderthal (PRJEB21157), Altai Neanderthal (PRJEB1265), Denisovan (ERP001519), Chimpanzee (SRP012268), Gorilla (PRJEB2590) and Orangutan (SRR748005) were obtained either from SRA or from collaborators. These data were mapped to GRCh37 to obtain reads mapping to the *NOTCH2* (chr1:120,392,936-120,744,537) and *NOTCH2NL* (chr1:145,117,638-145,295,356) loci in that assembly, and then those reads were remapped to a reference containing just the GRCh38 version of *NOTCH2*. Coverage was extracted with bamCoverage, normalizing to 1x coverage across the custom *NOTCH2* reference. The resulting coverage tracks were then scaled to the average of the unique region of *NOTCH2* then underwent the same sliding midpoint normalization described above, with 5,000 datapoints per window and 2.5 kb step size.

### Gordian Assembler

The extremely low number of long fragments per partition in the 10x Chromium process ensures that nearly all partitions containing sequence from a *NOTCH2NL* repeat will contain sequence from precisely one repeat copy. In order to recover the precise *NOTCH2NL* repeat sequences, a process was developed to assemble paratypes using barcoded reads. A 208 kb multiple sequence alignment of *NOTCH2NL* paralogs was constructed and a consensus sequence generated. For each sample being assembled, the 10x Genomics Longranger pipeline was used to map enriched or unenriched reads to GRCh38. All reads that mapped to any of the five *NOTCH2* or *NOTCH2NL* loci in that alignment were extracted, as well as any reads associated with the same input molecules via the associated barcodes. These reads were then remapped to the consensus sequence. FreeBayes (<https://arxiv.org/abs/1207.3907>) was used to call variants on these alignments with ploidy set to 10 based on the putative number of *NOTCH2NL* repeats. Each barcode is then genotyped to find the set of alleles supported at each informative SNP site. Alleles for the majority of SNP sites are undetermined in each barcode due to the sparsity of the linked reads. The result is an MxB sparse matrix where M is the number of variants and B is the number of barcodes identified as having *NOTCH2*-like sequence. A statistical model is then used to phase this matrix into K paratypes. For each cluster of barcodes representing a single paratype, all reads with the associated barcodes are pooled for short-read assembly using the DeBruijn graph assembler idba\_ud (Peng et al., 2012).

### Establishment of Paratypes in Population

The paratype assembly process described above was applied to the MYcroarray enriched 10x Genomics sequencing of NA19240, H9, NA12877, and the six Simons VIP samples. The H9 paratypes were validated with full-length cDNA sequencing. The NA12878/NA12891/NA12892 trio (Utah) as well as the NA24385/NA24143/NA24149 trio (Ashkenazi) were assembled using linked read data produced by 10x Genomics for the Genome In A Bottle Consortium. Inheritance was established for the Ashkenazi trio, as well as for the three NA12878 paratypes that assembled. Inherited paratypes are not double counted in [Table S1](#). NA12877 did not assemble completely and so is not included in the table. A scaffolding process using alignments of contigs to GRCh38 was performed to construct full-length *NOTCH2NL* loci for each of these assemblies. The *NOTCH2NL* transcripts were annotated and assessed for their protein level features.

### Enrichment and Sequencing of Full-Length cDNA

Full-length cDNA was constructed from both week 5 cortical organoids as well as undifferentiated H9 hESC total RNA similar to previously described protocols ([Byrne et al., 2017](#)) and were enriched using the same MyBaits oligonucleotide set as the 10x Chromium libraries. These cDNA libraries were prepared and sequenced on the Oxford Nanopore MinION. 47,391 reads were obtained for the undifferentiated cells and 118,545 reads for the differentiated cells. The reads were base called with Metrichor. After pooling these datasets, the reads were aligned to GRCh38 to identify putative *NOTCH2NL* reads. 2,566 reads were identified in the week 5 dataset that mapped to *NOTCH2NL*, and 363 in the undifferentiated. Both datasets were filtered for full-length transcripts by requiring at least 70% coverage to the first 1.1 kb of the consensus sequence. This filtering process removed *NOTCH2* like transcripts, leaving a final set of 1,484 transcripts pooled across both time points to be analyzed.

### Validating H9 Haplotypes Using Full-Length cDNA

The 1,484 *NOTCH2NL* transcript sequences identified above were aligned to a consensus sequence of H9 ESC transcript paratypes using MarginAlign ([Jain et al., 2015](#)). The reads were then reduced into feature vectors containing variant sites along the first 1.1 kb of the consensus to eliminate noise related to alternative transcription stop sites. The feature vectors were aligned using a Hidden Markov Model with one path for each of the paratype assemblies. Since the transcripts are already aligned to a consensus, there is no need for reverse transitions in the model, and since variation or recombination between paralogs is already accounted for in the assemblies, no transitions between paths are allowed. This vastly simplifies the Forward algorithm, and the maximum probability path (usually determined with the Viterbi Algorithm) is trivial to calculate under these conditions. All mismatches were assumed to be errors and were given an emission probability of 0.1 to approximate the error rate of the nanopore. The paratype assembly was validated by showing that there were no recurrent feature vectors that did not align well to any path through this model.

### CRISPR Mutation of *NOTCH2NL* in the H9 ES Line

To avoid targeting *NOTCH2*, two guides were used: one in intron 1 with a 1 base mismatch with *NOTCH2* and *NOTCH2NLR*, but identical to the corresponding sequence in all H9 1q21 *NOTCH2NL* genes, and another that spans a 4 bp deletion relative to *NOTCH2* at the start of exon 5. This region is also quite different in *NOTCH2NLR* (13/20 mismatches to *NOTCH2NL*) ([Figure S5A](#)). H9 hESC at passage 42 were plated on a 6-well dish at 40%–50% confluency. After 24 hours, cells were treated with 10  $\mu$ M ROCK inhibitor (Y27632; ATCC, ACS-3030) for 1 hour. 2.5  $\mu$ g of each guide plasmid (E2.1& E5.2, [Figure S5](#) cloned into pX458, Addgene) was then introduced for 4 hours using Xfect DNA transfection reagent (Clontech, 631317). Each guide set was introduced to all 6 wells of a 6-well plate. 48 hours after transfection, cells were dissociated from wells using Accutase cell dissociation enzyme (eBioscience, 00-4555-56), then rinsed twice in PBS supplemented with 0.2mM EDTA, 2% KnockOut Serum Replacement (Thermo Fisher, 10828028), 1% Penicillin-Streptomycin (LifeTech, 15140122), and 2  $\mu$ M thiazovivin (Tocris, 1226056-71-8), and resuspended in a final volume of 1mL of sorting buffer. The cells were then filtered in a 70  $\mu$ m filter and sorted on a FACS Aria II (BD Biosciences) with a 100  $\mu$ m nozzle at 20psi to select for cells expressing the Cas9-2A-GFP encoded on pX458. Gating was optimized for specificity. Single cells positive for GFP were plated on a 10 cm plate containing  $1.5 \times 10^6$  mouse embryonic fibroblasts (MEFs) and cultured in E8 Flex with 2  $\mu$ M thiazovivin (Tocris, 1226056-71-8) for added for the first 24 hours. After growing 5–7 days, individual colonies were manually isolated into 1 well of a 6-well dish on 250,000 MEFs in E8 Flex. 3–5 days later, 3–7 good colonies at passage 42+3 were frozen in BAMBANKER (Fisher Scientific, NC9582225). Remaining cells on MEFs were used for PCR deletion assay. For all subsequent analysis, cells were adapted to culturing on vitronectin (Thermo Fisher A14700) in GIBCO's Essential 8 Flex medium (Thermo Fisher, A2858501).

PCR assay for CRISPR deletion: For each clone, gDNA was isolated from one 70% confluent well of a 6-well dish using Zymo Quick-gDNA Miniprep kit (Zymo, D3006) according to the manufacturer's protocol. PCR was performed using approximately 70ng gDNA with Herculase II fusion DNA polymerase (Agilent, 6006745) using primers N2NL E2del\_F (5' CACAGCCTTCTCAAA CAAA 3') and N2NL E5del\_R (5' GTGCCACGCATAGTCTCTCA 3'). PCR products of the expected size were cloned and sequenced to determine that at least one of *NOTCH2NL* locus harbored the expected deletion. Positive clones underwent Chromium library preparation, target enrichment, Illumina sequencing and *NOTCH2NL* gene assembly as described above.



### NOTCH2NL Expression in Week 5 Neurospheres

Two replicates of bulk RNA-seq of week 5 cortical organoids derived from H9 ES as well as undifferentiated cells from the H9 differentiation time course described above were quantified against a custom Kallisto reference based on GENCODE V27. Using bedtools, all transcripts which overlapped our curated annotations of *NOTCH2NL* paralogs and *NOTCH2* were removed. After converting this annotation set to FASTA, a subset of our paratype assemblies of H9 *NOTCH2NL* paralogs were added in. Only one representative of both *NOTCH2NLR* and *NOTCH2NLC* was used due to their high similarity on the transcript level. The TPM values of the replicates were averaged.

### Estimate of *NOTCH2* and *NOTCH2NL* Expression in human fetal brain scRNA-Seq data

To assess *NOTCH2NL* expression in the developing brain, we re-analyzed single cell RNA sequencing data from (Nowakowski et al., 2017). Initial analysis of this data showed low expression of *NOTCH2* and *NOTCH2NL* presumably due to removal of multi-mapping reads. To address this, we constructed a custom Kallisto reference based off GENCODE V19 (hg19) where we removed the transcripts ENST00000468030.1, ENST00000344859.3 and ENST00000369340.3. The reads for 3,466 single cells were then quantified against this Kallisto index, and the *NOTCH2* and *NOTCH2NL* rows of the resulting gene-cell matrix compared to previously generated tSNE clusters.

### Copy Number Estimates of *NOTCH2NL* in Human Population

The copy number of *NOTCH2NLR* and *NOTCH2NLC* in the human population were established by extracting reads that map to *NOTCH2* (chr1:119,989,248-120,190,000), *NOTCH2NLR* (chr1:120,705,669-120,801,220), *NOTCH2NLA* (chr1:146,149,145-146,328,264), *NOTCH2NLB* (chr1:148,600,079-148,801,427) and *NOTCH2NLC* (chr1:149,328,818-149,471,561) from 266 individuals in the Simons Diversity Panel. These reads were then remapped to the 101,143 bp consensus sequence of a multiple sequence alignment of alignable portions of *NOTCH2* and all *NOTCH2NL* paralogs. This multiple sequence alignment was used to define our SUN markers, and the ratio of reads containing a SUN to a non-SUN were measured and the median value taken for *NOTCH2NLC* and *NOTCH2NLR*. Establishing copy number with SUNs proved difficult for *NOTCH2NLA* and *NOTCH2NLB* due to the high rate of segregating ectopic gene conversion alleles in the population. Each of the 266 samples was studied by hand. Using comparison to the 10 normal genomes assembled, it appeared that *NOTCH2NLA* and *NOTCH2NLB* are not copy number variable in the phenotypically normal population.

### Paratype Estimation of *NOTCH2NL* in Human Population

Assigning paratypes without assemblies is not possible. To try and evaluate the gene conversion landscape in the population, we took the ratio of SUN read depths in all 266 Simons individuals as well as the six Simons VIP samples and our 10 assembled genomes and plotted them split up by paralog (Table S4). These were evaluated for *NOTCH2NLC* and *NOTCH2NLR* copy number (Figure S1G). Three samples were identified in Simons with apparent gene conversion in *NOTCH2NLC*, which we did not observe in any of our assembled samples. Manual analysis of these SUN diagrams led to the annotation of six distinct classes of *NOTCH2NLA*-*NOTCH2NLB* gene conversion with varying population frequencies. In some cases, the data were of lower quality and harder to interpret. The most common gene conversion allele is an overwrite of around 20kb of *NOTCH2NLB* by *NOTCH2NLA* in intronic sequence between exons 2 and 3, present in 42.5% of Simons normals haplotypes. When interpreting these SUN plots, it is helpful to remember that the denominator of the ratio is the total copy number, and as such as individuals stray from  $N = 10$  the expected values change. Gene conversion can be observed as regions where one paralog has ratios on the y axis go up while the other goes down. Exons 1-5 are located at 19,212-19,590 bp, 59,719-59,800 bp, 84,150-84,409 bp, 92,421-92,756 bp and 93,009-97,333 bp respectively in the consensus sequence.

### Copy Number Estimates of Microarray 1q21.1 Deletion/Duplication Syndrome Patients

Comparative genomic hybridization (CGH) microarray probes from Agilent array designs #014693, #014950, #24616, and #16267 were mapped to the human hydatidiform mole genome assembly using the pblat aligner (<https://code.google.com/p/pblat/>). IDs for microcephaly and macrocephaly patients visualized in Figure S7 are as follows: control-1: MCL08273; control-2: GSM1082800; 1: LG\_252808110380\_S01; 2: WSX002375; 3: SGM250214; 4: MCL08277; 5: MUG249341; 6: MCL04601; 7: MCL00270; 8: MCL02135; 9: NGS260131; 10: MCL01089; 11: MCL01415. The relative affinities of each probe for each of its mapping locations were calculated using the DECIPHER R package; the predicted hybridization efficiency of a probe and a mapping location was divided by the predicted hybridization efficiency of the probe and its reverse complement, yielding the affinity for the mapping location. An integer linear programming (ILP) model was created for each sample, with integral variables representing the copy number of each probe mapping location in the CGH sample genome and the CGH reference genome, and additional variables representing the total affinity-weighted copy number of all mapping locations for each probe. Approximate equality constraints were added to represent the measured sample/normal hybridization ratios (normalized per-probe to an average control value of 1.0 for arrays with control samples (GEO accession GSE44300) available), the chromosomal structure of the genome, and the prior belief that the copy number at most locations would be 2. Each approximate equality constraint was constructed by creating two variables, which were restricted to be positive and greater than the difference between the constrained quantities in each direction; the weighted sum of these two variables was then added into the model's objective function. In an alternate method, the locations of homologous

sequences that could provide a plausible mechanism for duplication or deletion of a region were also added (data not shown). Finally, the resulting ILP model was minimized using CBC<sup>79</sup> (<https://projects.coin-or.org/>) to produce the sample's integral copy number calls.

## QUANTIFICATION AND STATISTICAL ANALYSIS

For analysis of RNA sequencing read count data, DESeq2 (2.11.39) was used with  $n = 3$  per condition. Replicates were grouped and compared pairwise between conditions. Adjusted  $p$  value ( $p\text{-adj} < 0.05$ ) was used to determine statistically significant genes.

In Notch signaling reporter assays, data with a single independent experiment were analyzed by  $t$  test, with Holm-Bonferroni correction for multiple testing, to determine significant effects ( $p < 0.05$ ). Error bars are indicating SD. For data with multiple independent experiments, two-way or one-way ANOVA and Tukey's HSD was used to determine statistically significant effects ( $p < 0.05$ ), with Holm-Bonferroni correction. For visualization in graphs, weighted average and weighted standard error of the mean (SEM) were calculated over the multiple experiments.

Images were taken of human H9\* and H9<sup>NOTCH2NL $\Delta$</sup>  cortical organoids at days 3, 6, 8, 10, 12, 14, 16, 18, 20, 22, 24, 26, and 28 of growth. Images were also taken of organoids generated from stable mESC cell lines expressing NOTCH2NL<sup>Sh, T1971</sup> or EV on days 2, 4, 6, and 8. Each image was loaded into FIJI, and length along the longest axis of every EB at least half-way in view of the image were measured. A two-tailed Kolmogorov-Smirnov test was done on the pair of measurements at each time point. Human EBs were significantly ( $p < 0.05$ ) different sizes at each time point, and very significantly ( $p < 0.005$ ) different on days 3, 6, 12, 14, 18, 20, 22, 24, and 26. Mouse EBs showed no significant size difference at any time point.

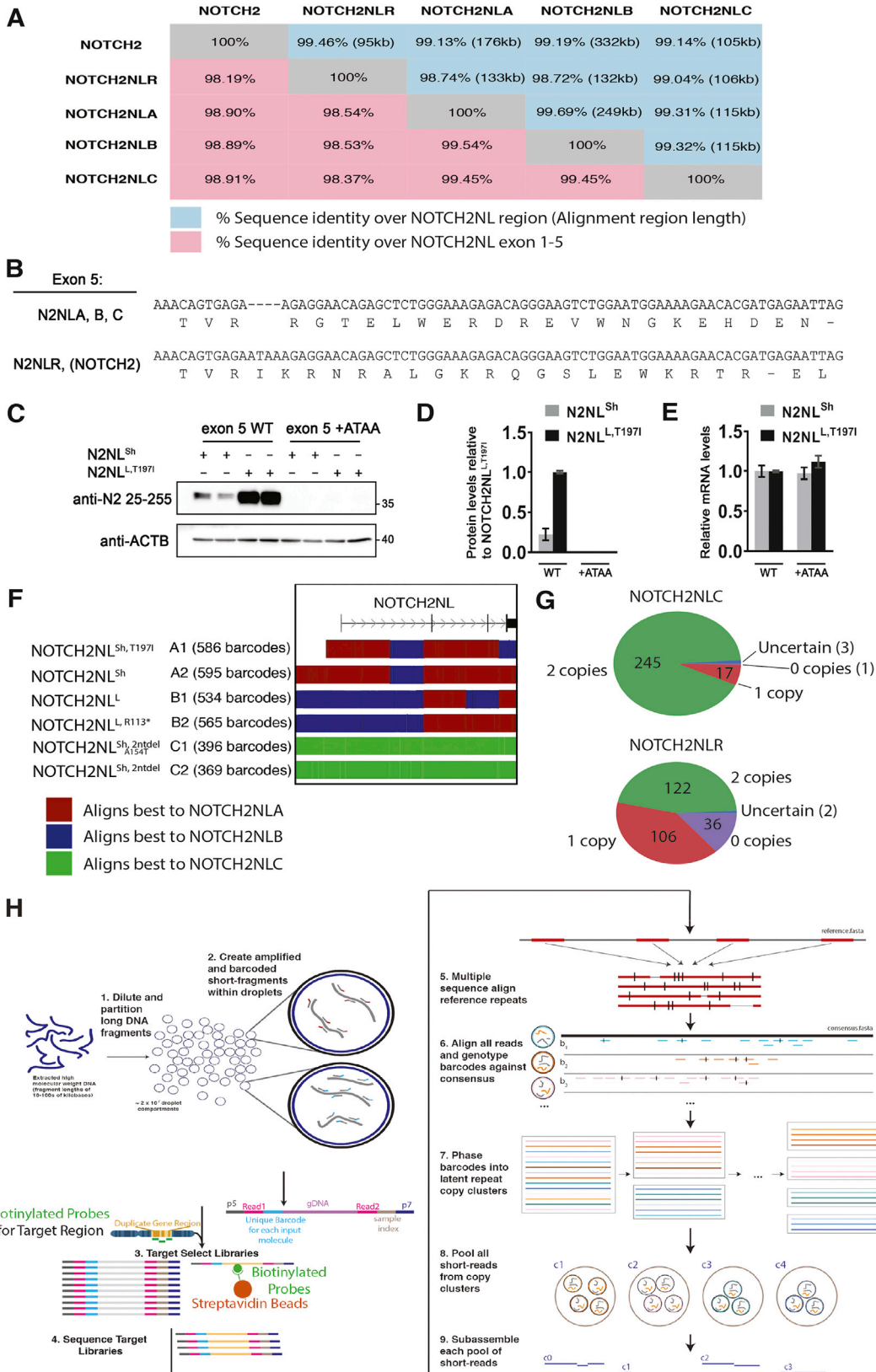
Analysis of Immunofluorescence images was done in FIJI (ImageJ 1.51 s). For cell counts, images were thresholded, followed by watershed option. Cell counts were calculated using Analyze particles (size pixel<sup>2</sup> 12-infinity). Organoid section surface area was used to normalize the amount of positive cells counts. For calculating CTIP2 intensity (gray values), the following parameters were used after loading an image: Subtract background: 10px, followed by Threshold: Li. Then, analyze particles was used to calculate the gray value per cell and averaged across the section for statistical analysis. For calculating SOX2 intensity (gray values), the following parameters were used: Threshold: MaxEntropy was used. Then, analyze particles (size pixel<sup>2</sup> 12-infinity) was used to calculate the gray value per cell and averaged across the section for statistical analysis. Sections from the same organoid were averaged and used as a single replicate in the analysis. Statistics for cell counts and fluorescence intensity were analyzed by  $t$  test, followed by Holm-Bonferroni correction for multiple testing.

## DATA AND SOFTWARE AVAILABILITY

The copy number inference software used is available from [https://bitbucket.org/adam\\_novak/copynumber](https://bitbucket.org/adam_novak/copynumber). Gordian assembler is available on github at [https://github.com/abishara/gordian\\_assembler](https://github.com/abishara/gordian_assembler). The upstream and downstream analysis scripts for Gordian assembler are available on github at <https://github.com/vrubels/Notch2NL-Project>. Enriched linked read data on cell lines are deposited on SRA under accession SRP130766. For the sequence data on the Simons VIP collection samples, the following policy applies. Approved researchers can obtain the Simons VIP population dataset described in this study (<https://www.sfari.org/resource/simons-vip/>) by applying at <https://base.sfari.org>. Protected linked read data are available from SFARIbase under accession number SFARI\_SVIP\_VSV\_1. Additional public sequences can be found from Genome in a Bottle at <ftp://ftp-trace.ncbi.nih.gov/giab/ftp/data/>.

Wild-type H9 hESC cortical organoid time course RNA-Seq data are available at GEO: GSE106245.

Week 4 human H9\* WT and NOTCH2NL knock-out RNA-Seq, and day 6 mouse 46C WT and NOTCH2NL knock-in RNA-Seq are available at GEO: GSE111082.



(legend on next page)

---

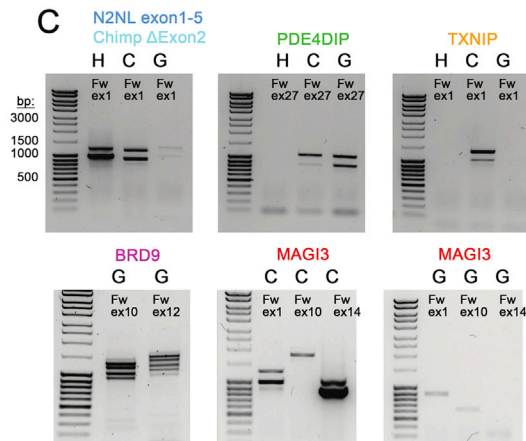
**Figure S1. Characterization of NOTCH2NL Genomic Features, Related to Figure 1**

- (A) Identity between *NOTCH2*-related genes as measured over the alignable genomic region (blue) or the gene exons (pink).
- (B) DNA and amino acid sequence of human *NOTCH2NL* genes in exon 5, which is derived from *NOTCH2* intron 4.
- (C) Immunoblot of mouse ESCs transfected with WT *NOTCH2NL*, or *NOTCH2NL* with ancestral ATAA inserted in exon 5.
- (D) Relative protein levels based on the immunoblot in panel C.
- (E) RT-qPCR analysis of the same samples for determination of transcript levels for each condition.
- (F) Alignment of the H9 assembled paratypes to GRCh38. Each paratype is colored as to whether a position aligns best to GRCh38 *NOTCH2NLA*, *NOTCH2NLB* or *NOTCH2NLC*.
- (G) Observed frequency of individuals with the indicated *NOTCH2NLC* and *NOTCH2NLR* copy number in the Simons Diversity Panel (n = 266).
- (H) Schematic of linked-read sequencing and Gordian Assembler protocol using the 10x Genomics Chromium genome assay and oligo-capture to enrich for library fragments containing the desired genomic region.

A

Chimp	NOTCH2NL exons	Additional Genome Support	Breakpoint Coordinates (hg38 BLAT)
	ΔExon2 only		
ΔExon2	1,3-5	BAC: CH251-414E24	chr1:148,675,676-148,623,447
LRIG			
ΔExon2	1,3-5	BAC:CH251-305M22 BAC:CH251-397N13	chr1:148,675,676-148,623,447
ΔExon2	1,3-5	BAC:CH251-243D3 BAC:CH251-485H13	chr1:148,675,676-148,623,447
MAGI3 5'	3-5	WGS:AAC203011046.1 WGS:AADA01172734.1	chr1:113,651,659-146,175,285
MAGI3 3'	3-5	WGS:AAC203149796.1	chr1:113,536,139-146,169,274
TXNIP	2-5	WGS:AAC203149820.1	chr1:145,995,530-146,226,704
PDE4DIP	2-5	WGS:AADA01102044.1 WGS:AAC203011197.1 WGS:AAC203149689.1	chr1:149,005,377-149,426,133
NOTCH2	1-5		

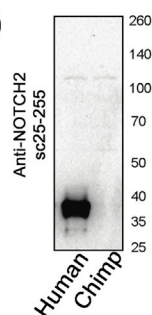
C



B

Gorilla	NOTCH2NL exons	Genome Support	Breakpoint Coordinates (hg38 BLAT)
PDE4DIP	2-5	BAC: CH277-26C18 Tl: 1679409700 Tl: 2019116386 Tl: 1680614711 Tl: 2192386756	chr1:149,005,377-149,426,133
MAGI3	3-5	Tl: 1671716786 Tl: 1671781255 Tl: 2033420236	chr1:113,651,629-146,175,285
BRD9	3-5	BAC: CH277-57H6	chr1:147,069,489-148,619,452 chr5:872,995-chr1:147,072,407

D



E

LCA genes \* Frameshift splice junction ✓ In-frame splice junction X Stop codon

**PDE4DIP exon 27** \* **NOTCH2NL exon 2**

AGTCTCATCCAGAGACTATCCAGCTGGAGGCCAGCTCATTGCAGTGTCCAGATGGCTATGACCCCTGTGTAATGAAGGAATGTGTGTACCTACCACAATGGCACAGGATACTGCAAAATG  
S L I Q R V S Q L E A Q L I A V S R W L X T L C K - R N V C Y L P O W H R I L Q M  
Human ORF NOTCH2NL protein: L Q C R D G Y E P C V N E G M C V T Y H N G T G Y C K C

**MAGI3 exon 14** \* **NOTCH2NL exon 3**

TGTCTACTAAGTCTCAGACCGAAGATCTCTATGGAGATGTCAGAAAGGCTTCTGGGGGAATATGTCAACATCGAGACCCCTGTGAGAAGAACCCTGCCAGAATGGTGGGACTTGTGTGC  
V L L T V R R K I F Y G D V Q K A S W G N I V N I E T P V R R T A A R M V G L V W  
Human ORF NOTCH2NL protein: C P E G F L G E Y C Q H R D P C E K N R C Q N G G T C V  
CCAGGCCATGCTGGGAAAGCCAGTCCCGATGTCCTCAGGTTTACAGGAGAGGATGCCAGTACTCGACATCCATCCATGCTTGTGTCTCGACCTGCCTGATGGCGGCACATGCCA  
P R P C W G K P R A D V P Q G L Q E R T A S T R H L I H A L C L D L A X M A A H A  
A Q A M L G K A T C R C A S G F T G E D C Q Y S T S H P C F V S R P C L N G G T C H

**Chimpanzee specific genes**

**MAGI3 exon 1** \* **NOTCH2NL exon 3**

CTTCCGCGAGCCCACTCCAGACTGTGAACCAAGATGTCAGAAAGGCTTCTGGGGGAATATGTCAACATCGAGACCCCTGTGAGAAGAACCCTGCCAGAATGGTGGGACTTGTGTGC  
F R E P I R L K T V K P D V Q K A S W G N I V N I E T P V R R T A A R M V G L V W  
Human ORF NOTCH2NL protein: C P E G F L G E Y C Q H R D P C E K N R C Q N G G T C V  
CCAGGCCATGCTGGGAAAGCCAGTCCCGATGTCCTCAGGTTTACAGGAGAGGATGCCAGTACTCGACATCCATCCATGCTTGTGTCTCGACCTGCCTGATGGCGGCACATGCCA  
P R P C W G K P R A D V P Q G L Q E R T A S T R H L I H A L C L D L A X M A A H A  
A Q A M L G K A T C R C A S G F T G E D C Q Y S T S H P C F V S R P C L N G G T C H

**TXNIP exon 1** ✓ **NOTCH2NL exon 2**

CTATGAAGACCGCTTCTCTGGAAGACCACCAACAGCATTGCGGTGTGAATGGCTATGAACCCCTGTGTAATGAAGGAATGTGTGTACCTACCACAATGGCACAGGATACTGCAAAATG  
Y E D T L L L E D Q P T A L R C X D G Y E P C V N E G M C V T Y H N G T G Y C K C  
Human ORF NOTCH2NL protein: L Q C R D G Y E P C V N E G M C V T Y H N G T G Y C K C

**NOTCH2NL exon 1** \* **NOTCH2NL exon 3**

GCTGGCCTCTGGCTGTGCTCGCGACCCCGCCATGATGTCAGAAAGGCTTCTGGGGGAATATGTCAACATCGAGACCCCTGTGAGAAGAACCCTGCCAGAATGGTGGGACTTGTGTGC  
L A L W L C A T P A H D V Q K A S W G N I V N I E T P V R R T A A R M V G L V W  
Human ORF NOTCH2NL protein: C P E G F L G E Y C Q H R D P C E K N R C Q N G G T C V  
CCAGGCCATGCTGGGAAAGCCAGTCCCGATGTCCTCAGGTTTACAGGAGAGGATGCCAGTACTCGACATCCATCCATGCTTGTGTCTCGACCTGCCTGATGGCGGCACATGCCA  
P R P C W G K P R A D V P Q G L Q E R T A S T R H L I H A L C L D L A X M A A H A  
A Q A M L G K A T C R C A S G F T G E D C Q Y S T S H P C F V S R P C L N G G T C H

**Gorilla specific genes**

**BRD9 exon 12** \* **NOTCH2NL exon 3**

GCGGAGACCCTCTAGGACGCTTCCAGCTGAAGCAGATGTCAGAAAGGCTTCTGGGGGAATATGTCAACATCGAGACCCCTGTGAGAAGAACCCTGCCAGAATGGTGGGACTTGTGTGC  
G G D H S R T L F Q L K Q M S R R L L G G I L S T S R P L X E E P L P E W W D L C V  
Human ORF NOTCH2NL protein: C P E G F L G E Y C Q H R D P C E K N R C Q N G G T C V

(legend on next page)

---

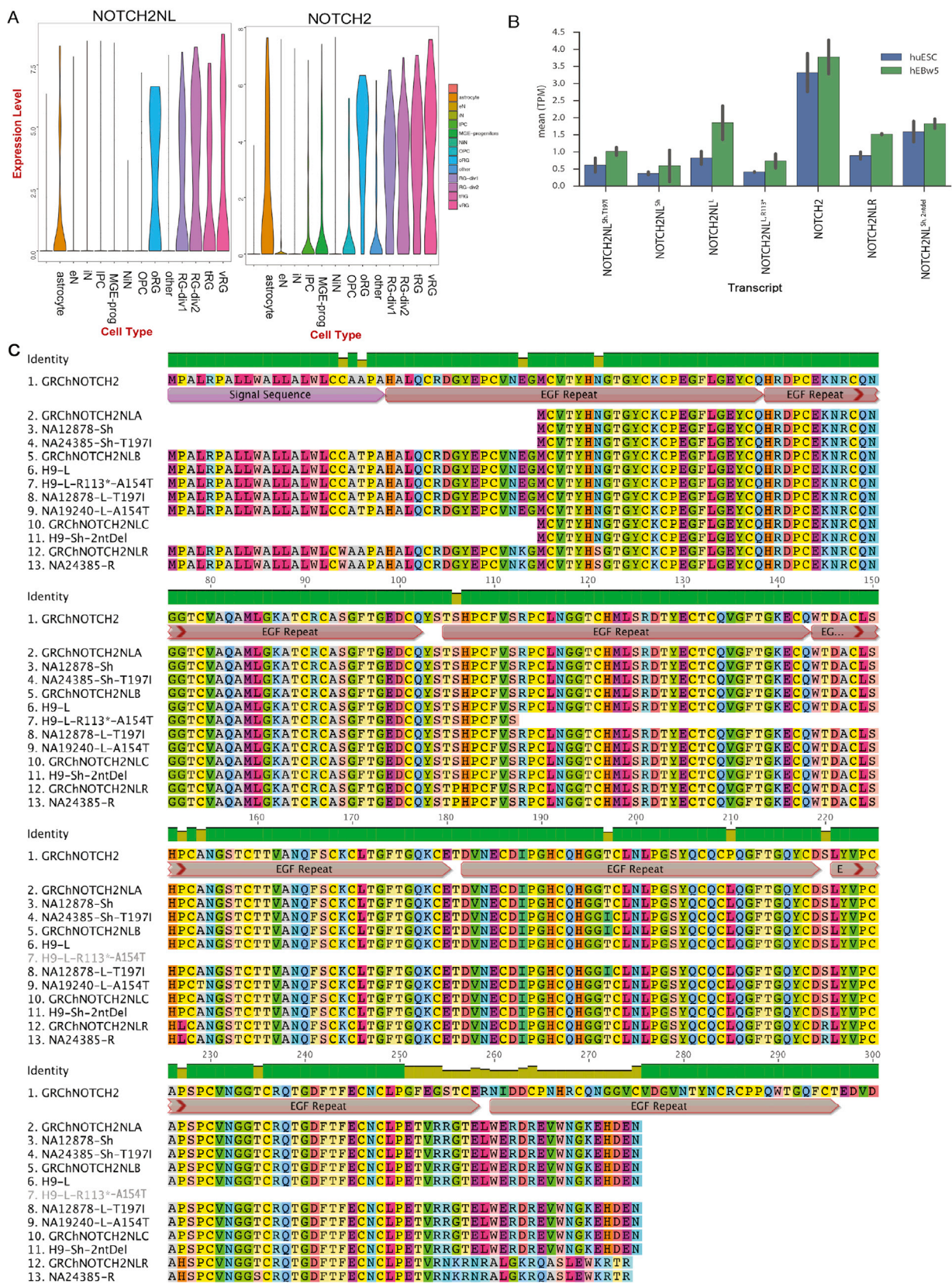
**Figure S2. Identification of NOTCH2NL-Related Genes in Chimpanzee and Gorilla, Related to Figure 2**

(A and B) Details of *NOTCH2NL*-like genes identified by *NOTCH2NL* *de novo* assembly, BAC and WGS shotgun sequencing for chimp (A) and by BAC and WGS shotgun sequencing for gorilla (B).

(C) Verification of fusion genes by RT-PCR on Chimp and Gorilla RNA. H = Human, C = Chimpanzee, G = Gorilla.

(D) Immunoblot blot using an N-terminal NOTCH2 antibody (aa 25-255), comparing ectopic expression of human *NOTCH2NL*<sup>Sh,T197I</sup> (left lane) to a Chimp *NOTCH2NL*-like gene lacking exon 2 (*NOTCH2NL*-like  $\Delta$ exon2) in mESCs (right lane).

(E) Details of splice junctions of fusion genes and related open reading frames. Top rows show nucleotide sequence in fusion transcripts. Middle rows show peptides derived from these transcripts. Lower rows contain the orthologous human NOTCH2NL protein sequence.



(legend on next page)

---

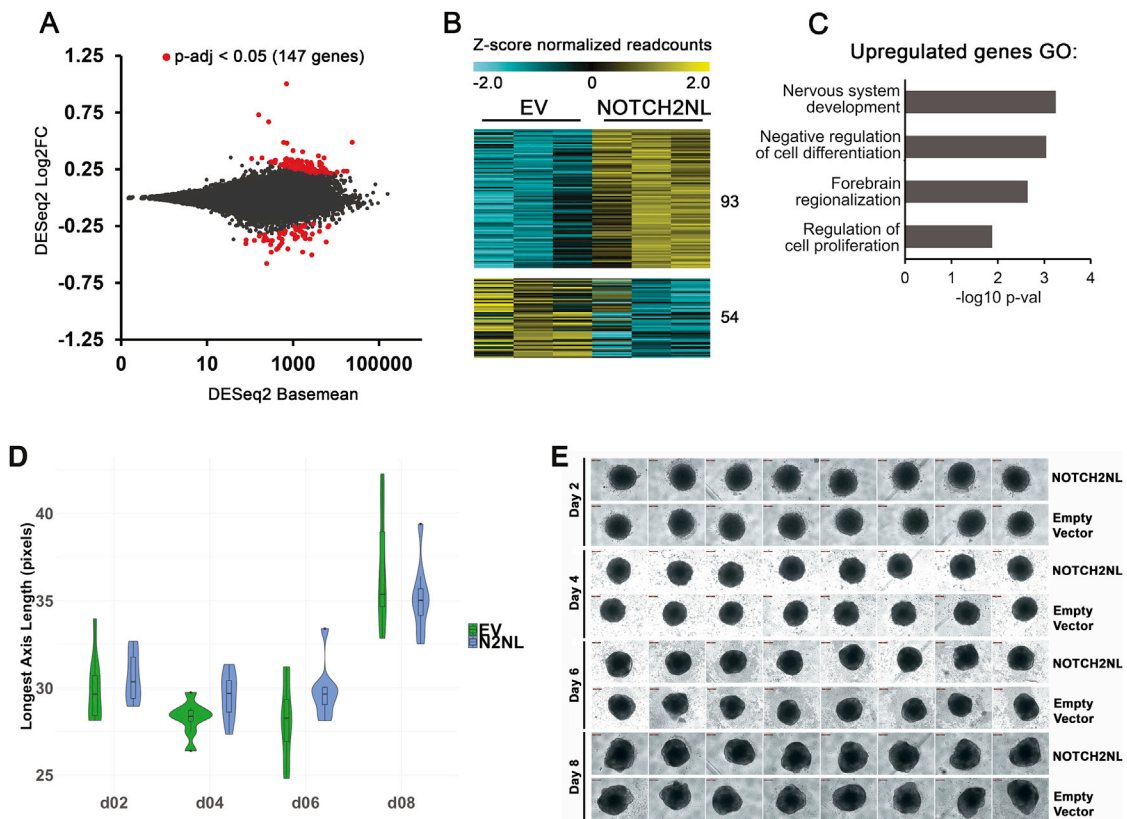
**Figure S3. NOTCH2NL Expression Patterns and Paratype Features, Related to Figures 1 and 3**

(A) Summary violin plots indicating *NOTCH2NL* and *NOTCH2* expression in various cell types.

(B) *NOTCH2NL* paratype expression in undifferentiated hESCs and week 5 cortical organoids from bulk Illumina RNA-Seq.

(C) Protein alignment of observed *NOTCH2*, *NOTCH2NL* and *NOTCH2NLR* paratypes based on our assembly results. Note that *NOTCH2* sequence extends beyond what is shown in the alignment. A segregating variant in *NOTCH2NLR* is found at amino acid position 235.





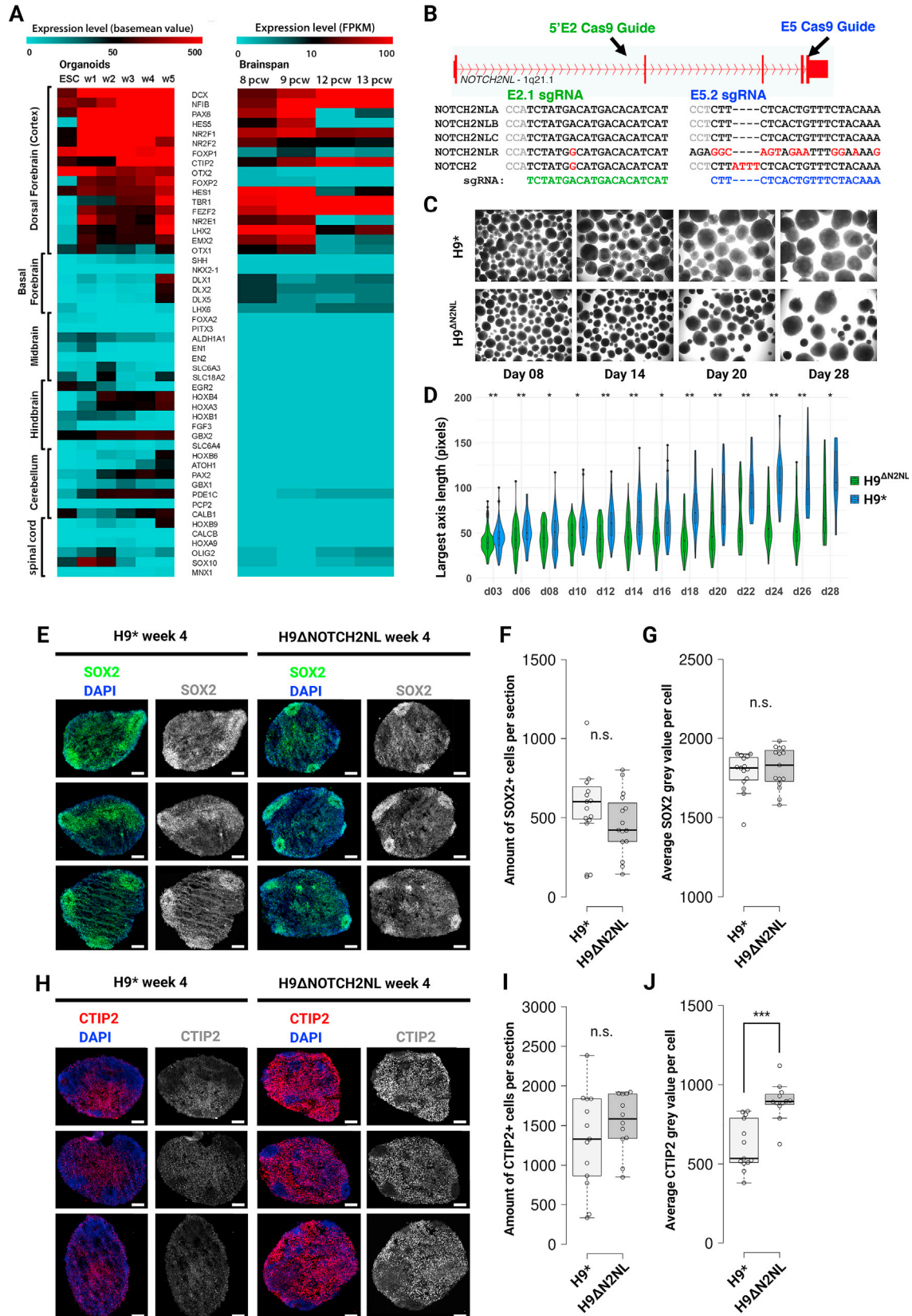
**Figure S4. NOTCH2NL Promotes Neural Stem Cell Proliferation in mESC Cortical Organoids, Related to Figure 4**

(A) MA plot of RNA-sequencing data of mouse cortical organoids based on DESeq2 analysis.

(B) Heatmap showing Z-scores of differentially expressed genes ( $p\text{-adj} < 0.05$ , DESeq2).

(C) GO terms significantly associated with the upregulated genes in organoids ectopically expressing *NOTCH2NL*<sup>Sh,T1971</sup>. Images are 1283  $\mu\text{m}$  wide.

(D and E) Violin plot showing size (length along the longest axis) of mouse cortical organoids based on brightfield pictures in (E). There was no significant difference ( $p < 0.05$ ) in size between groups at any time point using a two-sided Kolmogorov-Smirnov test.



---

**Figure S5. Loss of NOTCH2NL Accelerates Neuron Generation in hESC Cortical Organoids, Related to Figure 5**

(A) Heatmap of expression levels for a selection of brain structure marker genes from hESC-derived cortical organoids at the indicated time points (left) and from human embryonic dorsal prefrontal cortex (DFC) samples at 8 pcw, 9 pcw, 12 pcw and 13 pcw, derived from the Allen Brain Atlas (<http://www.brainspan.org>) (right). w = week; pcw = post conception week; FPKM = fragments per kilobase of exon per million fragments mapped.

(B) Schematic of strategy to generate *NOTCH2NL*-specific deletions using CRISPR/Cas9 and alignment of the two guide sequences used to *NOTCH2NL*-related sequences.

(C) Brightfield images of H9<sup>+</sup> and H9<sup>Δ*NOTCH2NL*</sup> organoids at selected time points. Images are 4961 μm wide.

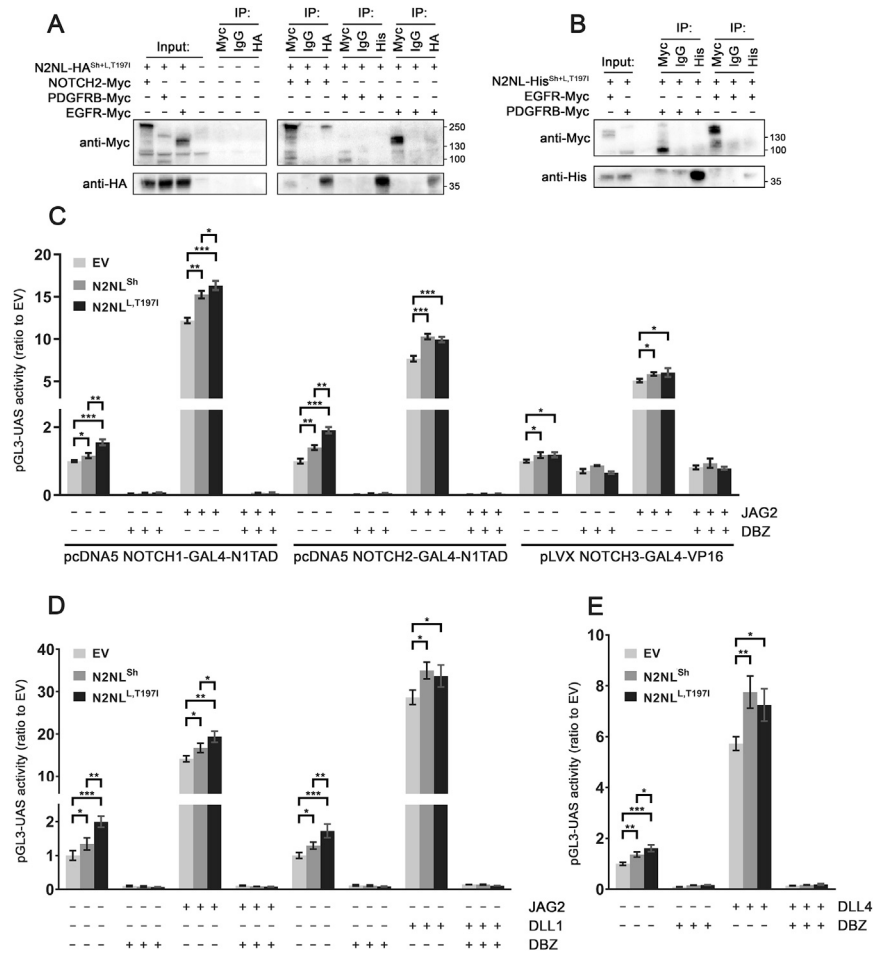
(D) Violin plot showing quantification of organoid size over time measured by length of longest axis, \*p < 0.05, \*\*p < 0.005, Kolmogorov-Smirnov test.

(E) DAPI staining and SOX2 immunostaining of H9<sup>+</sup> and H9<sup>Δ*NOTCH2NL*</sup> organoid sections.

(F and G) Quantification of SOX2<sup>+</sup> cell number and SOX2 intensity. n = 15 H9<sup>+</sup>, n = 15 H9<sup>Δ*NOTCH2NL*</sup>.

(H) DAPI staining and CTIP2 immunostaining of H9<sup>+</sup> and H9<sup>Δ*NOTCH2NL*</sup> organoid sections.

(I and J) Quantification of CTIP2<sup>+</sup> cell number and CTIP2 intensity, \*\*\*p < 0.0001, t test. n = 13 H9<sup>+</sup>, n = 12 H9<sup>Δ*NOTCH2NL*</sup>. Scale bars in IF stainings indicate 100 μm.



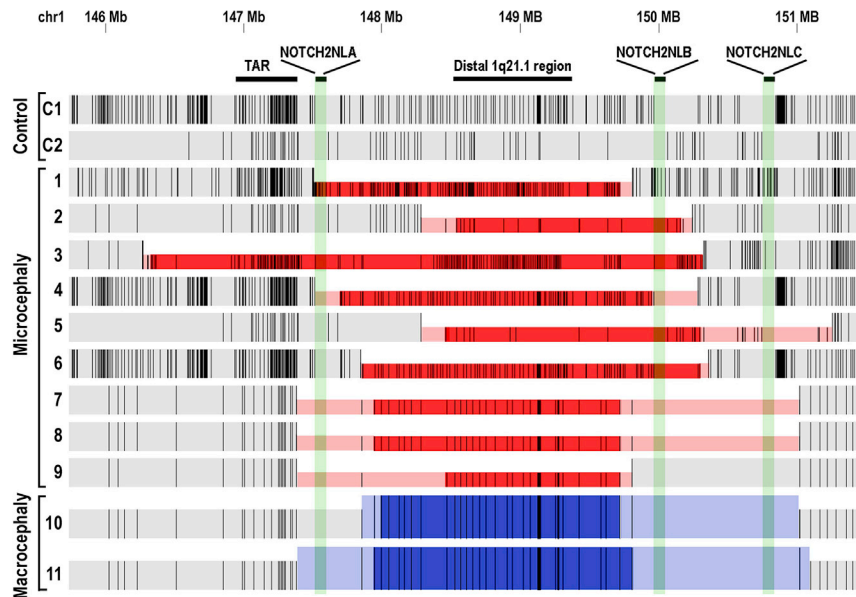
**Figure S6. Differential Activation of NOTCH Signaling by NOTCH2NL Paratypes, Related to Figure 6**

(A and B) Investigation of co-immunoprecipitation of NOTCH2NL with PDGFRB and EGFR in 2 independent experiments. N2NL = NOTCH2NL.

(C) NOTCH reporter assay to assess the effect of NOTCH2NL using either NOTCH1-GAL4, NOTCH2-GAL4 or NOTCH3-GAL4. U2OS cells transfected with EV, NOTCH2NL<sup>Sh</sup> or NOTCH2NL<sup>Sh,T197I</sup> in combination with the different NOTCH-Gal4 receptors, followed by co-culture on U2OS-JAG2 cells or U2OS control cells. n = 6 in one experiment. Student's t test with Holm-Bonferroni correction (\*p < 0.05, \*\*p < 10<sup>-3</sup>, \*\*\*p < 10<sup>-5</sup>), error bars indicate SD.

(D) Effects of different NOTCH ligands in reporter assay. U2OS cells transfected with NOTCH2NL<sup>Sh</sup> or NOTCH2NL<sup>Sh,T197I</sup> to assess NOTCH2-Gal4 mediated reporter activity. Here, transfected cells were co-cultured with either U2OS-JAG2 or OP9-DLL1 expressing cells. n = 6 in one experiment. Student's t test with Holm-Bonferroni correction (\*p < 0.05, \*\*p < 10<sup>-3</sup>, \*\*\*p < 10<sup>-5</sup>), error bars indicate SD.

(E) U2OS cells transfected with EV, NOTCH2NL<sup>Sh</sup> or NOTCH2NL<sup>Sh,T197I</sup> and NOTCH2-Gal4 were seeded on recombinant DLL4 coated plates or gelatin/BSA control plates, instead of co-culture with ligand-expressing cells. n = 13 in 3 experiments. Two-way anova with Tukey's HSD (\*p < 10<sup>-4</sup>, \*\*p < 10<sup>-8</sup>, \*\*\*p < 10<sup>-12</sup>), error bars indicate SEM.



**Figure S7. Alteration of NOTCH2NL Copy Number in Microcephaly and Macrocephaly Patients with 1q21.1 Copy-Number Variation, Related to Figure 7**

Relative probe intensities from CNV-microarrays for 2 controls and 11 patients with reported 1q21.1 aberrations mapped to the GRCh38 1q21.1 assembly. Gray: normal, red: deletion, blue: duplication. Dark red/blue is high confidence deletion/duplication based on probe values, light red/blue are potentially part of the deletion/duplication.