

Research article

Open Access

The genomic distribution of intraspecific and interspecific sequence divergence of human segmental duplications relative to human/chimpanzee chromosomal rearrangements

Tomàs Marques-Bonet^{1,2}, Ze Cheng², Xinwei She², Evan E Eichler² and Arcadi Navarro^{*1,3,4}

Address: ¹Unitat de Biologia Evolutiva Departament de Ciències Experimentals i de la Salut, Universitat Pompeu Fabra, Barcelona, Catalonia, Spain, ²Department of Genome Sciences, University of Washington School of Medicine, Seattle, Washington 98195, USA, ³Institució Catalana de Recerca i Estudis Avancats (ICREA) and Universitat Pompeu Fabra, Barcelona, Catalonia, Spain and ⁴Population Genomics Node (GNV8), National Institute for Bioinformatics (INB) Universitat Pompeu Fabra, Spain

Email: Tomàs Marques-Bonet - tmarques@u.washington.edu; Ze Cheng - ginger@gs.washington.edu; Xinwei She - xws@gs.washington.edu; Evan E Eichler - eee@gs.washington.edu; Arcadi Navarro* - arcadi.navarro@upf.edu

* Corresponding author

Published: 12 August 2008

Received: 6 August 2007

BMC Genomics 2008, 9:384 doi:10.1186/1471-2164-9-384

Accepted: 12 August 2008

This article is available from: <http://www.biomedcentral.com/1471-2164/9/384>

© 2008 Marques-Bonet et al; licensee BioMed Central Ltd.

This is an Open Access article distributed under the terms of the Creative Commons Attribution License (<http://creativecommons.org/licenses/by/2.0>), which permits unrestricted use, distribution, and reproduction in any medium, provided the original work is properly cited.

Abstract

Background: It has been suggested that chromosomal rearrangements harbor the molecular footprint of the biological phenomena which they induce, in the form, for instance, of changes in the sequence divergence rates of linked genes. So far, all the studies of these potential associations have focused on the relationship between structural changes and the rates of evolution of single-copy DNA and have tried to exclude segmental duplications (SDs). This is paradoxical, since SDs are one of the primary forces driving the evolution of structure and function in our genomes and have been linked not only with novel genes acquiring new functions, but also with overall higher DNA sequence divergence and major chromosomal rearrangements.

Results: Here we take the opposite view and focus on SDs. We analyze several of the features of SDs, including the rates of intraspecific divergence between paralogous copies of human SDs and of interspecific divergence between human SDs and chimpanzee DNA. We study how divergence measures relate to chromosomal rearrangements, while considering other factors that affect evolutionary rates in single copy DNA.

Conclusion: We find that interspecific SD divergence behaves similarly to divergence of single-copy DNA. In contrast, old and recent paralogous copies of SDs do present different patterns of intraspecific divergence. Also, we show that some relatively recent SDs accumulate in regions that carry inversions in sister lineages.

Background

Initial analyses of the human genome sequence have showed that ~5% of the human genome is composed by interspersed segmental duplications (SDs) [1]. SDs can be

defined as blocks of DNA ranging from 1–400 kb in length, with copies found in multiple sites and that typically share high sequence similarity (> 90%). The distribution of these duplications is non-uniform within and

among chromosomes, with a tendency to cluster in pericentromeric and subtelomeric regions [2-7] and in the breakpoints of chromosomal rearrangements [8-12]

Duplications have both functional and structural effects [1,2,6,7,9,13-15]. Their functional consequences are very diverse. First, by predisposing chromosomal architectures to be rearranged by non-allelic homologous recombination [7,12,16-18], SDs constitute genetic risk factors for many diseases (e.g. Prader-Willi, Williams-Beuren Syndromes, juvenile nephronophthisis or spinal muscular atrophy). Second, SDs are related to genic evolution because they produce duplications of coding sequences that can lead to genes with new functions [7,19-25]. Finally, rates of evolution of duplicated genes are accelerated just after the duplication event [26]. These accelerations could be due to an increase of mutation rates after duplication, the relaxation of purifying selection due to the duplication of functional genes, the action of positive diversifying selection on one or both copies, or a combination of these factors [5,25-28].

Regarding structural effects, SDs predispose chromosomes to rearrangements, which suggests that SDs may be the main force driving the evolution of genomic structure along the lineages of mammalian species [8-12]. Other studies, however, point to both SDs and chromosomal rearrangements as different manifestations of the intrinsic instability of some particular DNA sequences [9,13,29,30].

Recently, interest in the role of chromosomal rearrangements in speciation processes has been renewed. Models of chromosomal speciation based on the reduction of recombination induced by rearrangements pose that regions involved in those rearrangements could become isolated earlier when compared to the rest of the genome [31-34]. These models predict an association between rearranged regions involved in any speciation process and higher divergence rates of linked DNA sequences. Current evidence for or against such models is extremely contradictory. In human-chimpanzee comparisons, higher evolutionary rates were originally linked to chromosomal rearrangements [35-37], whereas other studies found no effect [38,39] and even more recent ones have detected lower evolutionary rates within inversions [40]. In other lineages, new studies remain consistent with the original finding of higher evolutionary rates associated with chromosomal rearrangements [41-43].

Other explanations have been proposed to account for the relationship between chromosomal rearrangements and faster or slower evolutionary rates. For example, chromosomal rearrangements can influence DNA divergence rates simply by inducing changes in genomic contexts. For

instance, if some DNA fragments are moved by a chromosomal inversion from a region with different recombination rates or different equilibrium nucleotide composition, this could induce changes in mutation [44,45]. Also, rearrangements may tend to occur or to be fixed in regions of relaxed purifying selection and, thus, of faster genic evolution [5,36]. Finally, chromosomal rearrangements (especially chromosomal fissions) have been found to be located in regions of ancestrally high GC content in mammals (at least in the Dog genome) [46]. Thus, ancestral GC content could be contributing to the observed relationship between chromosomal rearrangements and higher mutation rates by means of methylation and deamination of CpG dinucleotides, leading to higher divergence measures in regions close (and within) the rearrangements.

Regardless of how the relationship between sequence evolution and chromosomal location change is ultimately resolved, it is important to consider the possibility of an association between SDs and chromosomal rearrangements in relation to speciation. If rearranged chromosomes, whose breakpoints are enriched with SDs, take part in speciation processes in which individuals bearing different chromosomal structures become genetically isolated, it is possible that evolutionary novelties contained in these duplications play some role in such isolation processes.

To tackle this issue we must start by understanding the rates and patterns of SD divergence in the primate lineages. Here, we analyze the genomic distribution of intraspecific divergence between paralogous copies of human SDs and of interspecific divergence between regions duplicated either in humans or chimpanzees and their homologous sequences in the other species. We take into account all major chromosomal rearrangements (see Methods), and, in addition, several other genomic variables that affect evolutionary rates of single copy DNA, such as, linkage to the X chromosome, HSAX [41,47,48], or to telomeric and centromeric regions [40,49-51].

Results

We addressed three main sets of questions. First, how are SDs distributed in the genome relative to rearrangements? Second, what is the genomic distribution of divergence between paralogous copies of human SDs, especially in relation to rearrangements? And, third, what are the divergence distribution patterns of copies of SDs between humans and chimpanzees? To address each of these questions we used three different datasets (see Material & Methods for a detailed description). The first one (*Raw dataset*) contains pairs of coordinates of fragments of the human genome that have been defined as segmental duplications [1] together with measures of divergence

between these paralogous fragments. This dataset is used to detect accumulations of SDs in different parts of the genome. The second dataset (*Non-overlapping intraspecific dataset*) was created to remove redundant information from the previous dataset. It contains only a sample of SDs representative of each duplicated region. Finally, a third dataset (*Non-overlapping interspecific dataset*) was designed to represent the inter-specific divergence between human and chimpanzee for non-overlapping duplicated regions of the human genome. The aim of the two Non-overlapping datasets is to study the distribution of SD divergence rates in different regions of the genome while avoiding the redundant information that the first dataset contains. To do so, the simplifying assumption is made that the selected representative of each duplicated region actually reflects the complex history of the region.

Overrepresentation of relatively young SDs in rearranged regions

We started using the raw dataset (Dataset 1, see Methods) to study the distribution of paralogous copies of human SDs relative to the nine major rearrangements (Inversions) between humans and chimpanzees (human chromosomes 4, 5, 9, 12, 15, 16, 17 and 18). We defined as "young" SDs those with a greater than 98% sequence identity among copies, while SDs with less than 92% identity were labeled as "old". These labels, of course, do not imply strict age estimates, since gene conversion or positive selection are known to influence divergence rates of SDs.

After all the filtering processes (see Methods) in the filtered dataset, we observed a higher proportion of young SDs within rearranged regions than outside them: ~40% of SDs located within rearranged regions are young, while this figure is only ~12% for SDs outside the inverted regions of the same chromosomes. Also, these regions contained younger SDs than colinear chromosomes,

where only ~11% of SDs are classified as young (Table 1, Figure 1). It is crucial to note that these young duplications cannot be caused by the inversions. Most of the 10 major rearrangements separating humans and chimpanzees took place in the chimpanzee lineage [52], and here we are analyzing human SDs. Thus, this association is not caused by an accumulation of SDs within the inversion itself, but within the orthologous region in the homologous chromosome of the sister species, which retained the ancestral structure.

To check whether these results were due to a genome-wide phenomenon or were driven by some individual chromosomes, we performed a chromosome by chromosome analysis. This allowed us to pinpoint HSA5 and HSA9 as primarily responsible for the reported association. These chromosomes show the largest difference in percent identity and correspond to the greatest proportion of alignments (total number of SD pairs). No other chromosome showed a differential accumulation of young SDs within their rearrangements (Figure 2). Therefore, the association above is mainly due to these two chromosomes which, being inverted in one lineage (chimpanzee), have accumulated an expansion of recent SDs in its sister lineage (human).

Given that SDs tend to cluster within pericentromeric and subtelomeric zones [1,5,50], part of the above effect could be attributed to the fact that all the major rearrangements between humans and chimpanzees are pericentric, and thus include the centromere. We accounted for this possibility by excluding SDs that mapped within 5 Mb of the centromeres. To make sure that the filtering process had eliminated any centromere-associated effect, we simulated pericentric inversions in colinear chromosomes and searched for young SDs within them. Pseudo-inverted pericentric regions in colinear chromosomes were defined as regions equivalent in length and location to real rear-

Table 1: Distribution of SD identities relative to major genomic rearrangements between humans and chimpanzees.

	Inside rearranged regions	Outside rearranged regions	Colinear Chromosome
Similarity(ID)	Percentage of age within each category (%)		
90–91% ID	12.20	17.64	14.16
91–92% ID	7.76	12.79	16.50
92–93% ID	8.50	11.25	12.86
93–94% ID	5.55	8.96	15.24
94–95% ID	5.91	9.19	10.61
95–96% ID	6.47	7.51	8.36
96–97% ID	7.39	7.98	5.67
97–98% ID	6.47	12.42	6.43
98–99% ID	17.56	7.31	5.76
99–100% ID	21.63	4.81	4.41

The percentages were calculated as the proportion of pairwise alignments at each percent identity.

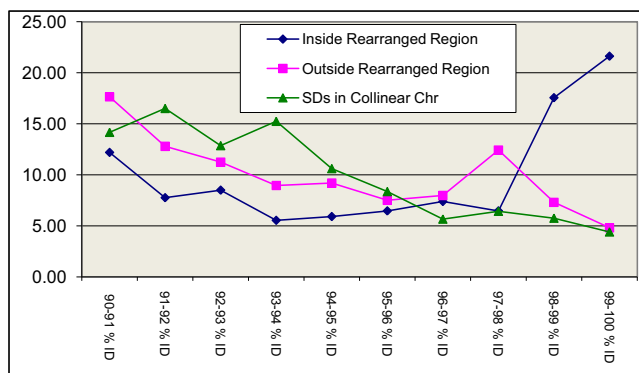


Figure 1
Distribution of SDs identities relative to major rearrangements (Inversions) between humans and chimpanzees. In Blue, the distribution of percentages of SDs that are located within the inversion of human chromosomes rearranged relative to chimpanzees. In pink, the distribution of SDs in rearranged chromosomes but outside the rearrangements. In green the percentages of identities of SDs located in chromosomes that are collinear (not rearranged) for both species.

rangements. Given that the average inversion spans 24.98% of its chromosome, we created a virtual inversion of that size in each collinear chromosome, keeping the centromere as the center of the inversion. On average, chromosomes with virtual inversions did present a higher proportion of young SDs, but the effect is not as large. First, the increase was only 50% of that in real inversions (Table 2, Figure 3); and second, only HSA10 and HSA7 seemed to accumulate some local clustering of recent SDs (Figure 4). However, clustering is not exclusive of the inverted region, as is the case for the inverted chromosomes HSA5 and HSA9, but extends all over the chromosome. The rest of the collinear chromosomes did not show any particular age distribution of SDs inside *vs.* outside virtual rearrangements, suggesting that the association of young SDs and rearranged chromosomes 5 and 9 might be not only due to the accumulation of SDs near centromeres, even if that accumulation is likely to make a major contribution to the magnitude of our observation.

The distribution of divergence between human paralogous SDs

To study how the rates of intraspecific evolution of SD may be affected by rearrangements and other factors such as the location in sex chromosomes or telomeres, we used a second dataset: the non-overlapping dataset or Dataset 2 (see Methods). Given the results above, we extracted two subsets from the original dataset: "young SDs" (> 98% ID) and "old SDs" (< 92% ID). We kept, as representatives of every covered zone, SDs that had both copies in the same class of region (see Additional file 1).

We sequentially analyzed and removed every known variable affecting divergence rates (Table 3), starting with sex chromosomes. Young human SDs located in HSAX presented less divergence among copies than equivalent SDs in autosomes. This is not the case for old SDs. No length differences were detected in SDs located in HSAX. When located in HSAY, young SDs presented lower intra-specific divergence and increased length. Old SDs in HSAY are also longer, but, in contrast, they present higher divergence between paralogous copies.

Regarding the position of SDs along chromosomes, we first considered telomeres. Only young SDs located in telomeres showed higher divergence between paralogous copies. They also showed shorter alignment sizes. On the contrary, old SDs did not present divergence differences between telomeres and the rest of the genome. When focusing on centromeres, we found that SDs near them are longer in both subsets (young and old SDs). As to divergence, only old SDs showed a slight decrease of paralogous divergence in pericentromeric regions compared to SDs located elsewhere in the genome.

HSA19 has been shown to have atypical divergence and nucleotide composition patterns. It presents higher divergence between human and mice, higher GC content, and an accumulation of DNA binding genes [53,54]. Also, HSA19 appears to have a deficit of interspersed SDs (as opposed to tandem) [5,53]. Surprisingly, our analysis shows that SDs located in this chromosome did not differ from SDs in other autosomes, neither in their length nor their divergence rates.

When we finally compared paralogous copies of human SDs located in rearranged chromosomes *versus* SDs located in collinear chromosomes, the only detectable patterns were that young SDs are significantly longer and less divergent when located in rearranged chromosomes. However, this observation can not be exclusively attributed to inversions; because when comparing divergence among copies of human SDs within the inverted regions (recall that most rearrangements took place in the chimpanzee lineage) *versus* SDs outside the inversion in rearranged chromosomes, there were no divergence differences, although SDs were longer within rearranged regions. Since evolutionary breakpoints are enriched with SDs in many species [8-12], we assessed the sequence features of SDs located at the breakpoints of inversions separating humans and chimpanzees. Neither the length nor the divergences of those SDs are statistically different from SDs located elsewhere in the genome.

Finally, we considered a set of small inversions recently detected *in silico* [55]. SDs located within these inversions showed a slight increase in divergence (highly significant

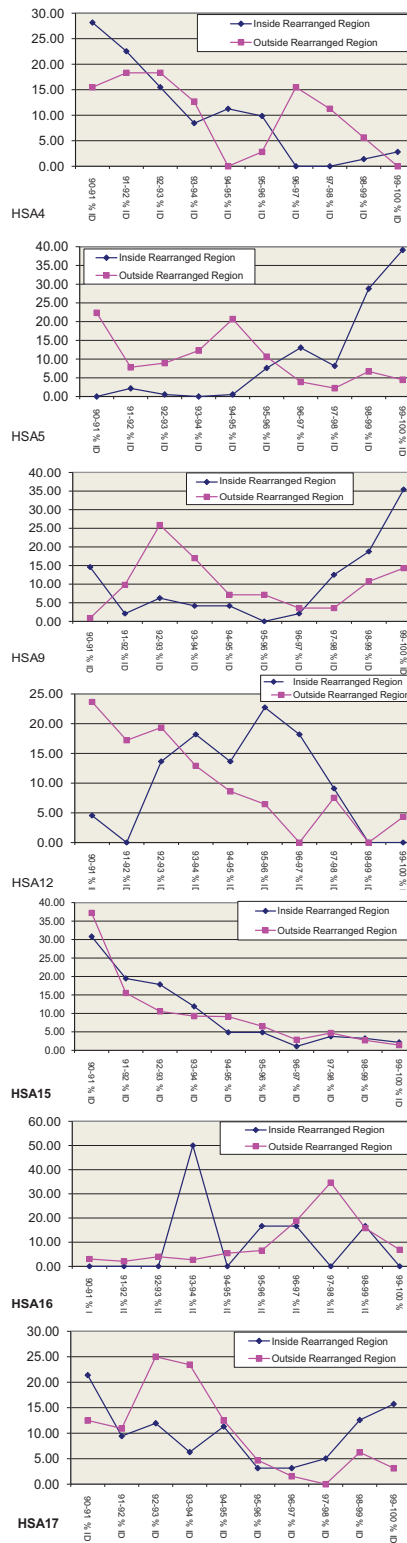


Figure 2
Distribution of identities relative to major rearrangements between human and chimpanzees for individual chromosomes. Chromosomes without any pair of copies of SDs within rearrangements are not shown (see Methods).

Table 2: Distribution of SDs identities relative to simulated rearrangements in colinear chromosomes between human and chimpanzees.

Similarity(ID)	Inside rearranged regions	Outside rearranged regions
	Percentage of age within each category (%)	
90–91% ID	10.41	16.35
91–92% ID	16.99	15.62
92–93% ID	8.49	14.16
93–94% ID	16.44	13.43
94–95% ID	8.22	12.77
95–96% ID	7.12	7.97
96–97% ID	4.93	6.27
97–98% ID	6.85	4.88
98–99% ID	9.04	4.15
99–100% ID	11.51	4.39

The percentages were calculated as the proportion of pairwise alignments at each percent identity.

for old SDs and marginally significant for young SDs). Only young SDs showed a remarkable increase of length within those rearrangements.

The distribution of divergence between human and chimpanzee SDs

We used Dataset 3 (Non-overlapping interspecific dataset, see Methods) to study divergence between human and chimpanzee SDs. This dataset is formed by two subsets of SDs: first, a subset non-overlapping human SDs for which we have measures of divergence from chimpanzee; and second, a subset of non-overlapping chimpanzee SDs for which we have measures of divergence from human (see Additional file 2). Again, we studied the effect of all the factors considered above in the divergence of SDs among species by sequentially analyzing and removing every individual factor (Table 4).

Our first observation was that SDs located in HSAX showed lower divergence than SDs in autosomes. This effect was consistent for both datasets of inter-specific SD divergence. Second, regions near telomeres presented higher divergence than the rest of the chromosome, just as previously seen for single-copy DNA in other studies [51,40]. This pattern was again consistent for both human and chimpanzee subsets of SDs. In contrast, and contrary to other studies [40,41], inter-specific divergence in SDs is higher near pericentromeric regions. Finally, SDs in HSA19 present higher divergence than SDs in other autosomes (Table 4).

Regarding the effect of rearrangements over interspecific SD divergence, we found that SDs within rearranged chromosomes diverged less than SDs in colinear chromosomes, which is in agreement with the most recent results for single copy genes [40]. In contrast to previous results, there were no significant divergence differences between SDs within versus SDs outside rearranged regions. Finally, and again differing from results in single copy genes [40], SDs located within small inversions [55] revealed lower divergence rates compared to SDs located elsewhere in the genome. To unveil any specific individual contributions of chromosomes, we analyzed interspecific divergence for every inversion (Table 5). There was no clear pattern to be detected. Only HSA9 presented higher divergence within its inversion and only when considering the subset of chimpanzee SDs.

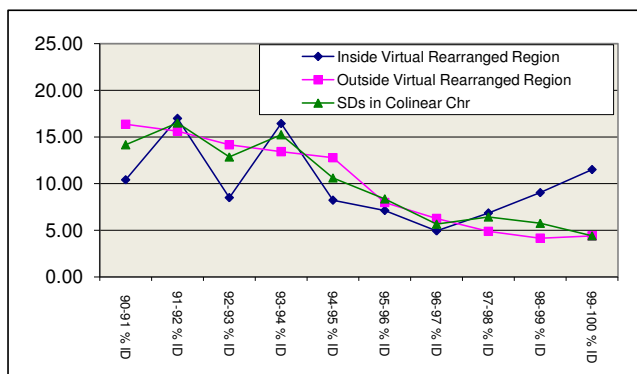


Figure 3
Distribution of SDs identities relative to simulated pericentromeric rearrangements in colinear chromosomes between humans and chimpanzees.

Discussion

Several conclusions arise from our whole-genome SDs analysis. First, there is an accumulation of relatively recent human SDs within some chromosomes that carry an evolutionary rearrangement between human and chimpanzees. Seven of the nine major inversions between humans and chimpanzees occurred in the chimpanzee lineage

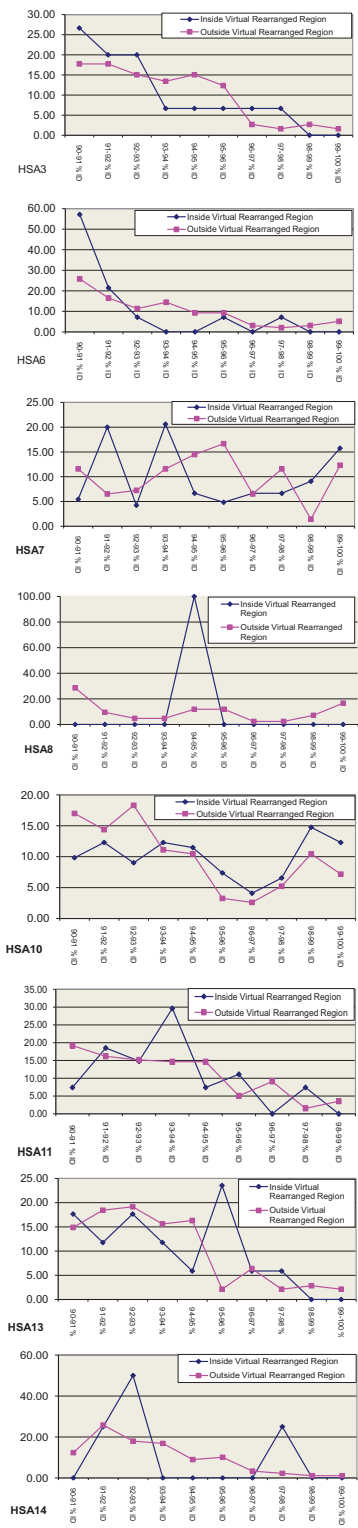


Figure 4
Distribution of SDs identities relative to simulated pericentric rearrangements in colinear chromosomes between humans and chimpanzees for individual chromosome. Chromosomes without any pair of copies of SDs within simulated rearrangements are not shown (see Methods).

Table 3: Average of divergences and lengths among paralogous copies of SDs relative to genomic factors and rearrangements between human and chimpanzees.

Sex Chromosomes				ID
	SDs in Autosomes	SDs in HSAX	P-value	> 98%
N	889	103		
K	0.0107	0.0076	< 0.001	
Size	41,439.50	52,887.93	0.115	
	SDs in Autosomes	SDs in HSAX	P-value	< 92%
N	3273	261		
K	0.0958	0.0962	0.364	
Size	4,689.73	4,458.48	0.578	
	SDs in Autosomes	SDs in HSAY	P value	> 98%
N	889	32		
K	0.0107	0.0052	< 0.001	
Size	41,439.50	#####	< 0.001	
	SDs in Autosomes	SDs in HSAY	P value	< 92%
N	3273	132		
K	0.0958	0.0976	0.001	
Size	4,689.73	12,290.17	< 0.001	
Telomeres (10 Mb)				ID
	SDs not in telomeres	SDs in Telomeres	P-value	> 98%
N	719	170		
K	0.0105	0.0115	0.052	
Size	44,040.90	30,437.11	0.01	
	SDs not in telomeres	SDs in Telomeres	P-value	< 92%
N	2831	442		
K	0.0958	0.0958	0.874	
Size	4,746.56	4,325.72	0.224	
Centromere (5 Mb)				ID
	SDs not in Centromeres	SDs in Centromeres	P-value	> 98%

Table 3: Average of divergences and lengths among paralogous copies of SDs relative to genomic factors and rearrangements between human and chimpanzees. (Continued)

N	572	147		
K	0.0106	0.01	0.316	
Size	36,111.33	74,896.07	< 0.001	
	SDs not in Centromeres	SDs in Centromeres	P-value	< 92%
N	2096	735		
K	0.0959	0.0953	0.029	
Size	3,908.13	7,137.51	< 0.001	
HSA19				ID
	SDs in other autosomes	SDs in HSA19	P-value	> 98%
N	561	11		
K	0.0105	0.0126	0.32	
Size	36,600.01	11,188.90	0.139	
	SDs in other autosomes	SDs in HSA19	P-value	< 92%
N	2029	67		
K	0.0959	0.0958	0.906	
Size	3,875.29	4,902.67	0.141	
Rearranged Chromosomes				ID
	SDs in Colinear chr	SDs in Rearranged Chr	P-value	> 98%
N	208	353		
K	0.0114	0.01	0.009	
Size	25,385.48	43,208.01	< 0.001	
	SDs in Colinear chr	SDs in Rearranged Chr	P-value	< 92%
N	890	1139		
K	0.0959	0.096	0.902	
Size	3,791.72	3,940.59	0.534	
Inside rearranged regions versus Outside rearranged regions, without HSA2				ID
	SDs Outside rearranged regions	SDs Inside rearranged regions	P-value	> 98%
N	216	87		

Table 3: Average of divergences and lengths among paralogous copies of SDs relative to genomic factors and rearrangements between human and chimpanzees. (Continued)

K	0.0104	0.0096	0.347	
Size	40,400.12	55,156.56	0.058	
SDs Outside rearranged regions		SDs Inside rearranged regions		P-value < 92%
N	715	267		
K	0.096	0.0957	0.586	
Size	3,879.46	4,868.64	0.016	
Inversions detected in (Newman et al 2005) vs rest of chromosomes				ID
SDs Outside Inversion		SDs Inside Inversion		P-value > 98%
N	541	20		
K	0.0104	0.0131	0.063	
Size	35,170.62	75,264.90	0.003	
SDs Outside Inversion		SDs Inside Inversion		P-value < 92%
N	1977	52		
K	0.0959	0.0986	0.004	
Size	3,853.94	4,686.98	0.281	
Breakpoints versus inverted chromosomes (excluding HSA2)				ID
SDs rest of Chr		SDs in BKP		P-value > 98%
N	286	17		
K	0.0103	0.008	0.135	
Size	44,189.30	52,171.11	0.611	
SDs rest of Chr		SDs in BKP		P-value < 92%
N	953	29		
K	0.096	0.0941	0.15	
Size	4,159.23	3,792.82	0.748	

Divergence (K) is calculated as the number of substitution per site between the two duplication alignments. Length (Size) corresponds to the aligned basepairs. P-values are calculated by means of permutation test (see Material and Methods).

Table 4: Average of inter-specific divergences in human SDs and chimpanzee SDs relative to genomic factors and rearrangements between human and chimpanzees.

HUMAN SD	X-Chromosome		Y-Chromosome		Telomeres vs. rest of genome		Centromeres vs. rest of genome		Chromosome 19	
	vs. Autosomes		vs. Autosomes							
	SDs in autosomes	SDs in the HSAX.	SDs in autosomes	SDs in the HSAY.	SDs outside Telomeres	SDs within Telomeres	SDs outside Centromeres	SDs within Centromeres	SDs outside HSA19	SDs within HSA19
N	1303	109	1303	51	1052	251	742	310	714	28
Divergence	0.0238	0.0161	0.0238	0.0259	0.0233	0.026	0.0228	0.0247	0.0225	0.0285
P-value		< 0.001		0.087		< 0.001		< 0.001		0.001

CHIMP SD	X-Chromosome		Y-Chromosome		Telomeres vs. rest of genome		Centromeres vs. rest of genome		Chromosome 19	
	vs. Autosomes		vs. Autosomes							
	SDs in autosomes	SDs in the HSAX.	SDs in autosomes	SDs in the HSAY.	SDs outside Telomeres	SDs within Telomeres	SDs outside Centromeres	SDs within Centromeres	SDs outside HSA19	SDs within HSA19
N	1415	110	1415	87	1224	191	789	435	779	10
Divergence	0.0222	0.0156	0.0222	0.0223	0.0217	0.0252	0.021	0.0231	0.0207	0.038
P-value		< 0.001		0.891		< 0.001		< 0.001		< 0.001

HUMAN SD	Rearranged vs.			SDs within vs.		
	Colinear chromosomes			outside rearranged regions (excluding HSA2)		
	SDs in colinear chr.	SDs in Rearranged chr.	P-value	SDs Outside inversions	SDs inside inversions	P-value
N	267	447		280	112	
Divergence	0.0236	0.0219	0.01	0.0218	0.0219	0.934

CHIMP SD	Rearranged vs.			SDs within vs.		
	Colinear chromosomes			outside rearranged regions (excluding HSA2)		

Table 4: Average of inter-specific divergences in human SDs and chimpanzee SDs relative to genomic factors and rearrangements between human and chimpanzees. (Continued)

	SDs in colinear chr.	SDs in Rearranged chr.	P-value	SDs Outside inversions	SDs inside inversions	P-value
N	256	523		312	160	
Divergence	0.0216	0.0203	0.025	0.0202	0.0199	0.693
HUMAN SD	Breakpoints vs.					
	inverted chromosomes					
	(excludingHSA2)					
	SDs in Rearranged chr.	SDs in BKP s	P-value			
N	370	22				
Divergence	0.0217	0.0242	0.136			
CHIMP SD	Breakpoints vs.					
	inverted chromosomes					
	(excludingHSA2)					
	SDs in Rearranged chr.	SDs in BKP s	P-value			
N	441	31				
Divergence	0.0201	0.0194	0.552			
HUMAN SD	SDs within vs. outside rearranged regions					
	(excluding breakpoints and HSA2)					

Table 4: Average of inter-specific divergences in human SDs and chimpanzee SDs relative to genomic factors and rearrangements between human and chimpanzees. (Continued)

	SDs Outside inversions	SDs inside inversions	P-value
N	264	106	
Divergence	0.0216	0.022	0.619
CHIMP SD	SDs within vs. outside rearranged regions		
	(excluding breakpoints and HSA2)		
	SDs Outside inversions	SDs inside inversions	P-value
N	291	150	
Divergence	0.0202	0.0199	0.583
HUMAN SD	inversions (Newman et al. 2005) versus rest chromosomes		
	SDs Outside inversions	SDs inside inversions	P-value
N	670	44	
Divergence	0.0227	0.0196	0.015
CHIMP SD	inversions (Newman et al. 2005) chromosomes		
	SDs Outside inversions	SDs inside inversions	P-value
N	713	66	
Divergence	0.021	0.0183	0.004

Divergence is calculated as the number of substitution per site between the two duplication alignments.

Table 5: Average of inter-divergences in human SDs and chimpanzee SDs in individual chromosomes relative to major rearrangements between human and chimpanzee.

Hs Chr	Human SDs					Chimp SDs					Lineage of the rearrangement
	Outside rearranged regions	Inside rearranged regions	P-value	N_{out}	N_{in}	Outside rearranged regions	Inside rearranged regions	P-value	N_{out}	N_{in}	
HSA1	0.0209	0.0070	0.043	106	1	0.0203			105	0	HUMAN
HSA4	0.0246	0.0263	0.608	17	13	0.0247			13	0	CHIMP
HSA5	0.0226	0.0170	0.116	10	16	0.0197	0.0161	0.065	10	57	CHIMP
HSA9	0.0230	0.0246	0.440	35	26	0.0184	0.0232	< 0.001	49	38	CHIMP
HSA12	0.0201	0.0243	0.286	9	7	0.0216	0.0190	0.875	1	8	CHIMP
HSA15	0.0251	0.0239	0.661	41	7	0.0224	0.0239	0.418	48	10	CHIMP
HSA16	0.0188	0.0319	0.008	41	2	0.0181	0.0413	0.008	68	1	CHIMP
HSA17	0.0215	0.0198	0.427	16	40	0.0225	0.0206	0.352	17	46	CHIMP
HSA18	0.0245			5	0	0.0252			1	0	HUMAN
TOTAL (without HSA2)	0.0218	0.0219	0.934	280	112	0.0202	0.0199	0.693	312	160	

(HSA4, HSA5, HSA9, HSA12, HSA15, HSA16 and HSA17), thus inversions cannot be the cause of that accumulation. The classical explanation of the accumulation would be that some of these young SDs predate the split of humans and chimpanzees and, thus, that they originated the inversions via non-allelic homologous recombination, but this seems unlikely in the light of their location. Our observations are consistent with an alternative scenario in which both chromosomal rearrangements and SDs are consequences of a third factor, perhaps regions of high instability [29,56]. This has been suggested in opposition to the idea that rearrangements and SDs are related only because highly similar regions promote rearrangements by non-allelic recombination [8-12]. A final possibility is that we are observing an excess of similar duplications in pericentromeric regions, specially in HSA5 and HSA9, in which there are an excess of young human SDs (> 98% ID) within regions that were inverted in chimpanzees. Even if we endeavored to remove the effect of centromeres, the possibility remains that particularly strong local effects were not accounted for. Only further research on primate SDs will allow to ascertain the involved phenomena and the order in which they occurred.

Several authors have found that the association among rearrangement breakpoints and segmental duplications is maintained between different lineages, but not within the same lineage [6,9,13]. For instance, primate segmental duplications occur at specific locations that are enriched for mouse-human synteny and mouse-rat synteny breaks. As the majority of synteny rearrangements have occurred in the rodent lineage, there cannot be a causal relationship between the two. Rather, it must be the case that pri-

mate segmental duplications tend to appear at the same locations in which rodent chromosomes have rearranged. Thus, instability would seem a long standing property of these genomes at these locations. In addition, She et al. [5] described a non-uniform distribution of intrachromosomal human SDs and highlighted nine autosomal human chromosomes with an excess of young human SDs, seven of which presented rearrangements between humans and chimpanzees (out of which five were chimpanzee specific). These observations provide evidence for a link between expansions of recent SDs in one lineage and chromosomal rearrangements in the other. Only deeper analysis of the two chimpanzee chromosomes that carry human-specific rearrangements (HSA1 and HSA2) will help to clarify any direct relationship among chromosomal rearrangements and expansion of SDs. This analysis, however, is beyond the scope of the present work and would require a higher quality sequence assembly of the chimpanzee genome.

Several explanations can be put forward as to why chromosomal rearrangements and young SDs should accumulate in sister lineages. The first one relates to the aforementioned instability regions. A recent change in the understanding of the evolution and behavior of SDs [56-58] poses that there are "core elements" that may act as sources for the dispersal of new SDs, by creating a large number of copies of themselves. These copies tend to cluster by means of local duplications. Thus, one explanation for our results would be that some core elements were present in the chromosomes ancestral to those that currently harbor inversions and SDs in humans and chimpanzees. As inversions decrease recombination between homologous chromosomes [31-33], core elements

becoming active and expanding by local copies in a given class of chromosome, would be less likely to be eliminated by recombination from their source regions while rearrangements are still segregating in the ancestral population. Thus, these core elements would accumulate copies of themselves only in the lineage in which they appeared. Moreover, the reduction of recombination caused by inversions [59] may also prevent the dispersal of the other associated SDs (not just the "core" elements). SDs trapped within rearrangements would be more similar to the "original" state because they would be prevented from invading other regions or chromosomes that could affect mutation rates and thus produce highly divergent SDs copies.

A second possibility is that lower recombination rates themselves could help explain our results. As suggested in previous work [60-63], there is a positive correlation among low recombination rates, low diversity within species, and low divergence that can be explained by a mutagenic effect of recombination. While inversions are segregating, regions within rearrangements have lower recombination rates and, thus, they should present lower divergence (either inter-specific or intra-specific). Of course, this would only be the case if rearrangements had been segregating in the population for a long time, so that the reduction of recombination could have a detectable impact on mutation rates.

Finally, some of the pairwise alignments classified as young SDs may in fact not be young, but their high identity may have been maintained by gene conversion [6]. Gene conversion is a homogenizing force that might erase differences among copies leading to underestimations of the age of SDs. It is possible that during the segregation of new rearrangements, the resolving structure of the few recombination events taking place within inversions would be biased towards increased gene conversion instead of the reciprocal exchange of chromatids. This would help explain the excess of highly similar tracks of SDs in one lineage together with inversions in the other lineage. However, this possibility implies that most gene conversion events ought to have happened before the separation of the two lineages and while the inversions were segregating in the population, which is unlikely. Moreover, She et al. [5] concluded that gene conversion events can not explain most of the high sequence identity of SD copies.

Secondly, we conclude that old and young SDs evolve at different rates when compared to single-copy DNA, hinting at different evolutionary trajectories for different SD classes. It is possible that young SDs are reflecting the history of recent primate evolution – which led to our species – while old SDs may reflect periods of duplication early

during primate evolution. Our results, for example, support a recent expansion of young SDs or a more complex interaction among recombination and SDs. The latter appears to be the case for SDs in telomeres, where young SDs are marginally more divergent, but are significantly shorter than elsewhere in the genome, maybe as a result of telomeres having higher rates of recombination [64,65]. In contrast, older SDs do not show this trend, which could be expected since telomeres are likely to have moved during primate evolution [66,67].

Regarding centromeres, and probably as a result of their decreased recombination rates [64,65], we obtained larger sizes of pairwise alignments of SDs. However, as centromeres have been reported to be prone to repositioning during evolution [68], this result could be reflecting some other cause rather than a direct recombination effect. SDs in HSA9 are also longer, which could be related to the lack of recombination in that chromosome or with recent, HSA9-specific, SD expansions.

Our main conclusion regarding major rearrangements between humans and chimpanzees is that young SDs located in rearranged chromosomes are longer and exhibit greater sequence identity than SDs located in colinear chromosomes. This could be expected, since rearrangements are known to be either human or chimpanzee specific and, thus, old SDs should not be affected by such recent rearrangements. Still, both young and old paralogous copies of SDs tend to be larger within rearranged chromosomal regions. This is also the case for smaller rearrangements that have been detected *in silico* [55]. These are puzzling patterns, hinting at some period of decreased recombination within rearranged regions. Finally, we observed higher levels of intraspecific divergence between SDs within smaller inversions [55]. Altogether, these data suggest that chromosomal rearrangements might have affected SD divergence rates during primate evolution.

Our third and last finding is that interspecific SD divergence displays rates and patterns that are roughly equivalent to those of single-copy DNA. SDs located in telomeres and in HSA19 show higher levels of interspecific SD divergence. Also, SDs located in rearranged chromosomes show lower divergence between species. Still, there are some discrepancies between single-copy and duplicated DNA, such as the higher divergence between SDs located in centromeres or the lower divergence of SDs within small inversions. Finally, HSA9 does not show the higher degree of divergence reported for single-copy DNA [40-42], perhaps as the result of the recent expansion of young SDs in that chromosome [5] or of extensive gene conversion [69].

As to individual inversions, HSA9 stands out as the only chromosome showing significantly higher human-chimpanzee divergence within its rearrangement. This suggests a burst of interspecific divergence within the inversion, that could perhaps predate speciation. Therefore, HSA9 is currently the best candidate to further study any potential relationship among SDs, rearrangements, divergence, and speciation. If chromosomes have played any role in any of the speciation events that led to humans and chimpanzees, it is clear that not all of them would have made the same contributions and, thus, would not bear the same molecular signatures. We should keep this in mind when trying to explain why HSA4, which presents high divergence of single copy DNA located within its inversion [40], does not present any particular pattern when considering its duplications. Also, certain chromosomes (such as HSA4, HSA5, HSA9, HSA15 and HSA16) have been pinpointed as the most dissimilar between humans and chimpanzees in terms of the expression intensities of their genes [70], findings which are only partially consistent with the results presented here.

Conclusion

In summary, we conclude that some rearrangements in the human and chimpanzee genome may be associated with dynamic regions in the genome that may result in rearrangements in one lineage and duplications in the other, although the effect is not seen in all chromosomes. On the other hand, intraspecific and interspecific divergences between SDs are affected by the same factors which were known to affect divergence rates of single copy DNA sequences. Although chromosomal rearrangements do affect the evolution and fate of SDs, chromosomal speciation (and its relation with SDs novelties) does not seem to have been a common process along the human and chimpanzee lineages. Still, HSA9 is the best possible candidate to have been involved in some complex interaction among rearrangements, SDs, and evolutionary novelties. Studies which include more species and focus on the powerful novelty-generating force of segmental duplications are needed to increase our knowledge of this exciting topic.

Methods

Structural information

Coordinates of telomeres and centromeres of all chromosomes were obtained from Build 35 of the human genome and NCBI Build 1 of the chimpanzee genome [71]. We considered as rearranged chromosomes all those for which major chromosomal rearrangements in either the human or the chimpanzee lineages have been evidenced by recent *in silico* [51,72] or cytological structures [73-77]. This comprised HSA1, HSA4, HSA5, HSA9, HSA12, HSA15, HSA16, HSA17 and HSA18, which differ by a pericentric inversion, and human chromosome 2,

which has been generated by an ancestral telomere-telomere fusion [78]. For all chromosomes, all *in silico*-estimated coordinates were compared with newly available cytological data in order to confirm inversion coordinates, as previously done [40]. When indicated, the mini-inversions detected "in silico" by [55] have been used.

Source of SD data

We retrieved information of segmental duplication about Human and Chimpanzee SDs from the Segmental Duplication Database [79,80]. In brief, we used the whole genome assembly comparison (WGAC), composed by SDs that were detected by the Blast-based method [1] to identify pairwise of DNA sequence of high similarity within the human assembly (Build 35).

Three datasets were built for analysis.

1) Dataset 1. Raw dataset. This is the standard dataset as downloaded from the Segmental Duplication Database. It contains pairs of coordinates of fragments of the human genome that fit two criteria: each pair has a minimum overlap size of 1 kb and presents > 90% identity among copies. [1]. A divergence measure was calculated for every pairwise detection as the number of substitutions per site (applying Jukes-Cantor correction). Besides divergence we also recorded the overlapping size (length) of every pair.

2) Dataset 2. Non-overlapping intraspecific dataset. Because of the methodology used in WGAC, most fragments in the raw dataset are repeated in many partially overlapping pairs, thus adding the same information several times especially in SD clusters. To eliminate this redundant information, we constructed a new dataset containing samples of SDs representative of every region of the genome covered by SD.

The steps used to construct our new dataset were as follows:

2.a. We constructed a "coverage map of SDs". We recorded the bound coordinates of overlapping SDs thus reporting every region in the human genome in which there are SDs. If two coverage zones were separated by a distance lower than 10 kb we joined them to avoid over-representing some parts of the genome. This procedure is similar that the one used in [5], when constructing "duplication hubs", that is, regions with an excess of aligned SDs.

2.b. From this coordinate list and for every "covered" region, we kept only one pair of SD as a representative of the region. The criteria to select one SD against the others were (1) Longer SDs were preferred, as measured by percentage of occupancy within that coverage zone and (2) SDs that had both paralogous copies in the same class of

regions. That is, if one coverage zone is in, say, a telomere, we kept the longer SD having its paralogous copy also in a telomere. In case of not having copies in comparable regions, we just keep the longest. We considered seven classes of genomic location: sex chromosomes, telomeres, centromeres, HSA19, colinear chromosomes, colinear regions in rearranged chromosomes, rearranged regions (inversions) and rearrangement breakpoints. The goal of these criteria is to retrieve some non-redundant basic information of this portion of the genome. (see Additional file 1 for a schematic view of the process).

The coverage map to create the non-overlapping datasets was constructed *a posteriori* of the splitting between "young" and "old" duplications. This was done to avoid a bias the selection of a sample SDs for every region. A bias could have been possible since old segmental duplications are shorter than young ones, probably as a result of recombination or subsequent deletion events that breakdown their structure [5]. Thus, if we followed our criteria (for instance the higher coverage criterion (see Methods)) before splitting between young and old SDs, the latter would have had lower probabilities of being selected as a sample of the region of interest

3) Dataset 3. Non-overlapping interspecific dataset. This third dataset was designed to recover a sample of divergence between humans and chimpanzees in regions covered by SDs. From the coverage map of human SD we recovered chimpanzee WGS (v1) sequences [5]. For every "covered" zone (a slice of coordinates), we split it in non overlapping windows of 5000 bp. For every one of those windows, divergence was calculated as the average of all chimpanzee WGS sequences against the human sequence. Finally the average of all windows was computed as the average divergence of the coverage zone. Divergence was calculated applying Kimura's correction. We also constructed a parallel dataset computing divergence of the chimpanzee SDs from human WGS sequences (see Additional file 2).

These three datasets were built in order to tackle different questions. To detect clusters of SDs in some parts of the genome we used the raw dataset, which provides a good perspective of the amount of SDs in every region. When we aim to study divergence in different regions of the genome while avoiding some biases such as overlapping SDs or copies in non-comparable regions of the genome, we should use the non overlapping datasets, either for intraspecific divergence (dataset 2) or interspecific divergence (dataset 3).

Filtering

Previous to every analysis we performed a sequential filtering process to remove the genomic variables that are

known to affect evolutionary rates in single copy DNA. These factors include linkage to sex chromosomes [47,81-83], to telomeres (10 Mb from the tip of chromosome) [51], to centromeres (5 Mb around them) [49,50,84] and to human chromosome 19 (HSA19) [53]. After getting the result for each one of the categories, those SDs located in that specific category were removed from the analysis. As an example, after analyzing the effect of sex chromosomes on our SDs dataset, we removed SDs in sex chromosomes and analyzed the effect of telomeres on the remaining dataset. We also eliminated pairs of SDs that had one copy in rearranged regions and the other copy in colinear regions (since it is impossible to classify that pair as SDs in rearranged or collinear regions).

Permutation tests

SDs divergence measures in different categories were compared by means of pairwise permutation tests (based on 1000 permutations). Empirical P-values in such tests, are calculated as the proportion of times that the difference of averages between two categories in a permuted dataset is equal or larger than the observed difference.

Authors' contributions

TM-B, EEE and AN designed the overall project. TM-B, ZC, XS and AN analyzed the data. TM-B and AN wrote the manuscript.

Additional material

Additional file 1

Construction of Dataset 2 (Non-overlapping intraspecific dataset). There are the 3 main steps to construct Dataset 2. STEP1, we constructed the "coverage map", basically we recorded the bound coordinates of overlapping SDs. STEP 2, we labeled every SD as belonging to telomeres, centromeres, HSA19, sexual chromosomes, inverted and non-rearranged zones and breakpoints. STEP 3, we kept as a sample of the region in the "coverage map" those SDs that had the longer paralogous copy in an equivalently labeled region.

Click here for file

[<http://www.biomedcentral.com/content/supplementary/1471-2164-9-384-S1.pdf>]

Additional file 2

The construction of Dataset 3 (Non-overlapping, interspecific divergence dataset). We split every zone in the coverage map of WGS chimpanzee reads in windows of 5000 bp. For every one of those inner windows, divergence (K_{wi}) was calculated as the average of divergences of every chimpanzee read against human sequence (B35) (see B). Finally the averages of all windows were joined in a single average divergence of the coverage zone (K_{total}) (see A)

Click here for file

[<http://www.biomedcentral.com/content/supplementary/1471-2164-9-384-S2.pdf>]

Acknowledgements

We want to thank J. Bertranpetit, E. Gazave, O. Fernando, M. Przeworski, T. Newman, A. Sharp and the members of the Evolutionary Biology Unit in UPF and Evan Eichler's lab at University of Washington for enriching discussions and lots of help during the preparation of this work. This research was supported by a grant to A.N. from the Ministerio de Ciencia y Tecnología (Spain, BFU2006 15413-C02-01) and by BE2005 and BP2006 fellowships to T.M.B from the "Departament d'Educació i Universitats de la Generalitat de Catalunya".

References

- Bailey JA, Yavor AM, Massa HF, Trask BJ, Eichler EE: **Segmental duplications: Organization and impact within the current Human Genome Project assembly.** *Genome Research* 2001, **11(6)**:1005-1017.
- Bailey JA, Gu ZP, Clark RA, Reinert K, Samonte RV, Schwartz S, Adams MD, Myers EW, Li PW, Eichler EE: **Recent segmental duplications in the human genome.** *Science* 2002, **297(5583)**:1003-1007.
- Cheung J, Estivill X, Khaja R, MacDonald JR, Lau K, Tsui LC, Scherer SW: **Genome-wide detection of segmental duplications and potential assembly errors in the human genome sequence.** *Genome Biol* 2003, **4(4)**:R25.
- Linardopoulou EV, Williams EM, Fan Y, Friedman C, Young JM, Trask BJ: **Human subtelomeres are hot spots of interchromosomal recombination and segmental duplication.** *Nature* 2005, **437(7055)**:94-100.
- She XW, Liu G, Ventura M, Zhao S, Misceo D, Roberto R, Cardone MF, Rocchi M, Green ED, Archidiacono N, Eichler EE: **A preliminary comparative analysis of primate segmental duplications shows elevated substitution rates and a great-ape expansion of intrachromosomal duplications.** *Genome Research* 2006, **16(5)**:576-583.
- Cheng Z, Ventura M, She XW, Khaitovich P, Graves T, Osoegawa K, Church D, DeJong P, Wilson RK, Paabo S, Rocchi M, Eichler EE: **A genome-wide comparison of recent chimpanzee and human segmental duplications.** *Nature* 2005, **437(7055)**:88-93.
- Sharp AJ, Cheng Z, Eichler EE: **Structural Variation of the Human Genome.** *Annu Rev Genomics Hum Genet* 2006.
- Armengol L, Pujana MA, Cheung J, Scherer SW, Estivill X: **Enrichment of segmental duplications in regions of breaks of synteny between the human and mouse genomes suggest their involvement in evolutionary rearrangements.** *Human Molecular Genetics* 2003, **12(17)**:2201-2208.
- Bailey JA, Baertsch R, Kent WJ, Haussler D, Eichler EE: **Hotspots of mammalian chromosomal evolution.** *Genome Biology* 2004, **5(4)**.
- Samonte RV, Eichler EE: **Segmental duplications and the evolution of the primate genome.** *Nature Reviews Genetics* 2002, **3(1)**:65-72.
- Sharp AJ, Locke DP, McGrath SD, Cheng Z, Bailey JA, Vallente RU, Pertz LM, Clark RA, Schwartz S, Segraves R, Oseroff VV, Albertson DG, Pinkel D, Eichler EE: **Segmental duplications and copy-number variation in the human genome.** *Am J Hum Genet* 2005, **77(1)**:78-88.
- Ji Y, Eichler EE, Schwartz S, Nicholls RD: **Structure of chromosomal duplicons and their role in mediating human genomic disorders.** *Genome Res* 2000, **10(5)**:597-610.
- Coghlan A, Eichler EE, Oliver SG, Paterson AH, Stein L: **Chromosome evolution in eukaryotes: a multi-kingdom perspective.** *Trends Genet* 2005, **21(12)**:673-682.
- Eichler EE, Sankoff D: **Structural dynamics of eukaryotic chromosome evolution.** *Science* 2003, **301(5634)**:793-797.
- Stankiewicz P, Shaw CJ, Withers M, Inoue K, Lupski JR: **Serial segmental duplications during primate evolution result in complex human genome architecture.** *Genome Research* 2004, **14(11)**:2209-2220.
- Lupski JR: **Genomic disorders: structural features of the genome can lead to DNA rearrangements and human disease traits.** *Trends Genet* 1998, **14(10)**:417-422.
- Shaw CJ, Lupski JR: **Implications of human genome architecture for rearrangement-based disorders: the genomic basis of disease.** *Human Molecular Genetics* 2004, **13**:R57-R64.
- Stankiewicz P, Lupski JR: **Genome architecture, rearrangements and genomic disorders.** *Trends in Genetics* 2002, **18(2)**:74-82.
- Courseaux A, Nahon JL: **Birth of two chimeric genes in the Hominidae lineage.** *Science* 2001, **291(5507)**:1293-1297.
- Johnson ME, Viggiano L, Bailey JA, Abdul-Rauf M, Goodwin G, Rocchi M, Eichler EE: **Positive selection of a gene family during the emergence of humans and African apes.** *Nature* 2001, **413(6855)**:514-519.
- Eichler EE: **Segmental duplications: What's missing, misassembled, and misassembled - and should we care?** *Genome Research* 2001, **11(5)**:653-656.
- Jordan IK, Wolf YI, Koonin EV: **Duplicated genes evolve slower than singletons despite the initial rate increase.** *Bmc Evolutionary Biology* 2004, **4**.
- Conrad DF, Andrews TD, Carter NP, Hurler ME, Pritchard JK: **A high-resolution survey of deletion polymorphism in the human genome.** *Nat Genet* 2006, **38(1)**:75-81.
- Sebat J, Lakshmi B, Troge J, Alexander J, Young J, Lundin P, Maner S, Massa H, Walker M, Chi M, Navin N, Lucito R, Healy J, Hicks J, Ye K, Reiner A, Gilliam TC, Trask B, Patterson N, Zetterberg A, Wigler M: **Large-scale copy number polymorphism in the human genome.** *Science* 2004, **305(5683)**:525-528.
- Zhang P, Gu ZL, Li WH: **Different evolutionary patterns between young duplicate genes in the human genome.** *Genome Biology* 2003, **4(9)**:R56.
- Conant GC, Wagner A: **Asymmetric sequence divergence of duplicate genes.** *Genome Res* 2003, **13(9)**:2052-2058.
- Lynch M, Conery JS: **The evolutionary fate and consequences of duplicate genes.** *Science* 2000, **290(5494)**:1151-1155.
- Kondrashov FA, Rogozin IB, Wolf YI, Koonin EV: **Selection in the evolution of gene duplications.** *Genome Biol* 2002, **3(2)**:RESEARCH0008.
- Ranz JM, Maurin D, Chan YS, von Grotthuss M, Hillier LW, Roote J, Ashburner M, Bergman CM: **Principles of Genome Evolution in the Drosophila melanogaster Species Group.** *Plos Biology (In press)* 2007.
- Casals F, Navarro A: **Inversions - the chicken or the egg?** *Plos Biology (News & Comments) (In press)* 2007.
- Navarro A, Barton NH: **Accumulating postzygotic isolation genes in parapatry: A new twist on chromosomal speciation.** *Evolution* 2003, **57(3)**:447-459.
- Rieseberg LH: **Chromosomal rearrangements and speciation.** *Trends in Ecology & Evolution* 2001, **16(7)**:351-358.
- Noor MAF, Grams KL, Bertucci LA, Reiland J: **Chromosomal inversions and the reproductive isolation of species.** *P Natl Acad Sci USA P Natl Acad Sci USA* 2001, **98(21)**:12084-12088.
- Kirkpatrick M, Barton N: **Chromosome inversions, local adaptation and speciation.** *Genetics* 2006, **173(1)**:419-434.
- Navarro A, Barton NH: **Chromosomal speciation and molecular divergence - Accelerated evolution in rearranged chromosomes.** *Science* 2003, **300(5617)**:321-324.
- Lu J, Li WH, Wu CI: **Comment on "Chromosomal speciation and molecular divergence - Accelerated evolution in rearranged chromosomes".** *Science* 2003, **302(5647)**:988.
- Navarro A, Marques-Bonet T, Barton NH: **Response to comment on "chromosomal speciation and molecular divergence - Accelerated evolution in rearranged chromosomes".** *Science* 2003, **302(5647)**:988.
- Zhang JZ, Wang XX, Podlaha O: **Testing the chromosomal speciation hypothesis for humans and chimpanzees.** *Genome Research* 2004, **14(5)**:845-851.
- Vallender EJ, Lahn BT: **Effects of chromosomal rearrangements on human-chimpanzee molecular evolution.** *Genomics* 2004, **84(4)**:757-761.
- Marques-Bonet T, Sánchez-Ruiz J, Armengol LL, Khaja R, Bertranpetit J, Rocchi M, Gazave E, Navarro A: **On the association between chromosomal rearrangements and genic evolution in humans and chimpanzees.** *Genome Biol* 2007 Oct 30;8(10):R23017971225 2007.
- Marques-Bonet T, Navarro A: **Chromosomal rearrangements are associated with higher rates of molecular evolution in mammals.** *Gene* 2005, **353(2)**:147-154.
- Armengol L, Marques-Bonet T, Cheung J, Khaja R, Gonzalez JR, Scherer SW, Navarro A, Estivill X: **Murine segmental duplica-**

- tions are hot spots for chromosome and gene evolution. *Genomics* 2005, **86(6)**:692-700.
43. Lindblad-Toh K, Wade CM, Mikkelsen TS, Karlsson EK, Jaffe DB, Kamal M, Clamp M, Chang JL, Kulbokas EJ 3rd, Zody MC, Mauceli E, Xie X, Breen M, Wayne RK, Ostrander EA, Ponting CP, Galibert F, Smith DR, DeJong PJ, Kirkness E, Alvarez P, Biagi T, Brockman W, Butler J, Chin CW, Cook A, Cuff J, Daly MJ, DeCaprio D, Gnerre S, Grabherr M, Kellis M, Kleber M, Bardeleben C, Goodstadt L, Heger A, Hitte C, Kim L, Koepfli KP, Parker HG, Pollinger JP, Searle SM, Sutter NB, Thomas R, Webber C, Baldwin J, Abebe A, Abouelleil A, Aftuck L, Ait-Zahra M, Aldredge T, Allen N, An P, Anderson S, Antoline C, Arachchi H, Aslam A, Ayotte L, Bachantsang P, Barry A, Bayul T, Benamara M, Berlin A, Bessette D, Blitshteyn B, Bloom T, Blye J, Boguslavskiy L, Bonnet C, Boukhgalter B, Brown A, Cahill P, Calixte N, Camarata J, Cheshatsang Y, Chu J, Citroen M, Collymore A, Cooke P, Dawoe T, Daza R, Decktor K, DeGray S, Dhargay N, Dooley K, Dooley K, Dorje P, Dorjee K, Dorris L, Duffey N, Dupes A, Egbiremolan O, Elong R, Falk J, Farina A, Faro S, Ferguson D, Ferreira P, Fisher S, FitzGerald M, Foley K, Foley C, Franke A, Friedrich D, Gage D, Garber M, Gearin G, Giannoukos G, Goode T, Goyette A, Graham J, Grandbois E, Gyaltsen K, Hafez N, Hagopian D, Hagos B, Hall J, Healy C, Hegarty R, Honan T, Horn A, Houde N, Hughes L, Hunnicutt L, Husby M, Jester B, Jones C, Kamat A, Kanga B, Kells C, Khazanovich D, Kieu AC, Kisner P, Kumar M, Lance K, Landers T, Lara M, Lee W, Leger JP, Lennon N, Leuper L, LeVine S, Liu J, Liu X, Lokyitsang Y, Lokyitsang T, Lui A, Macdonald J, Major J, Marabella R, Maru K, Matthews C, McDonough S, Mehta T, Meldrim J, Melnikov A, Meneus L, Mihalev A, Mihova T, Miller K, Mittelman R, Mlenga V, Mulrain L, Munson G, Navidi A, Naylor J, Nguyen T, Nguyen N, Nguyen C, Nguyen T, Nicol R, Norbu N, Norbu C, Novod N, Nyima T, Olandt P, O'Neill B, O'Neill K, Osman S, Oyono L, Patti C, Perrin D, Phunkhang P, Pierre F, Priest M, Rachupka A, Raghuraman S, Rameau R, Ray V, Raymond C, Rege F, Rise C, Rogers J, Rogov P, Sahalie J, Settipalli S, Sharpe T, Shea T, Sheehan M, Sherpa N, Shi J, Shih D, Sloan J, Smith C, Sparrow T, Stalker J, Stange-Thomann N, Stavropoulos S, Stone C, Stone S, Sykes S, Tchuinga P, Tenzing P, Tesfaye S, Thoulutsang D, Thoulutsang Y, Topham K, Topping I, Tsamla T, Vassiliev H, Venkataraman V, Vo A, Wangchuk T, Wangdi T, Weiand M, Wilkinson J, Wilson A, Yadav S, Yang S, Yang X, Young G, Yu Q, Zainoun J, Zembek L, Zimmer A, Lander ES: **Genome sequence, comparative analysis and haplotype structure of the domestic dog.** *Nature* 2005, **438(7069)**:803-819.
 44. Cooper DN, Yousoufian H: **The CpG dinucleotide and human genetic disease.** *Hum Genet* 1988, **78(2)**:151-155.
 45. Sved J, Bird A: **The expected equilibrium of the CpG dinucleotide in vertebrate genomes under a mutation model.** *Proc Natl Acad Sci U S A* 1990, **87(12)**:4692-4696.
 46. Webber C, Ponting CP: **Hotspots of mutation and breakage in dog and human chromosomes.** *Genome Res* 2005, **15(12)**:1787-1797.
 47. Li WH, Yi SJ, Makova K: **Male-driven evolution.** *Curr Opin Genet Dev* 2002, **12(6)**:650-656.
 48. Wolfe KH, Sharp PM: **Mammalian Gene Evolution - Nucleotide-Sequence Divergence between Mouse and Rat.** *J Mol Evol* 1993, **37(4)**:441-456.
 49. Rudd MK, Willard HF: **Analysis of the centromeric regions of the human genome assembly.** *Trends in Genetics* 2004, **20(11)**:529-533.
 50. She XW, Horvath JE, Jiang ZS, Liu G, Furey TS, Christ L, Clark R, Graves T, Gulden CL, Alkan C, Bailey JA, Sahinalp C, Rocchi M, Hausler D, Wilson RK, Miller W, Schwartz S, Eichler EE: **The structure and evolution of centromeric transition regions within the human genome.** *Nature* 2004, **430(7002)**:857-864.
 51. Mikkelsen TS, Hillier LW, Eichler EE, Zody MC, Jaffe DB, Yang SP, Enard W, Hellmann I, Lindblad-Toh K, Altheide TK, Archidiacono N, Bork P, Butler J, Chang JL, Cheng Z, Chinwalla AT, deJong P, Dehaunty KD, Fronick CC, Fulton LL, Gilad Y, Glusman G, Gnerre S, Graves TA, Hayakawa T, Hayden KE, Huang XQ, Ji HK, Kent WJ, King MC, Kulbokas EJ, Lee MK, Liu G, Lopez-Otin C, Makova KD, Man O, Mardis ER, Mauceli E, Miner TL, Nash WE, Nelson JO, Paabo S, Patterson NJ, Pohl CS, Pollard KS, Pruffer K, Puente XS, Reich D, Rocchi M, Rosenbloom K, Ruvolo M, Richter DJ, Schaffner SF, Smit AFA, Smith SM, Suyama M, Taylor J, Torrents D, Tuzun E, Varki A, Velasco G, Ventura M, Wallis JW, Wendl MC, Wilson RK, Lander ES, Waterston RH, Consortium CSA: **Initial sequence of the chimpanzee genome and comparison with the human genome.** *Nature* 2005, **437(7055)**:69-87.
 52. Szamalek JM, Goidts V, Searle JB, Cooper DN, Hameister H, Kehler-Sawatzki H: **The chimpanzee-specific pericentric inversions that distinguish humans and chimpanzees have identical breakpoints in *Pan troglodytes* and *Pan paniscus*.** *Genomics* 2006, **87(1)**:39-45.
 53. Castresana J: **Genes on human chromosome 19 show extreme divergence from the mouse orthologs and a high GC content.** *Nucleic Acids Research* 2002, **30(8)**:1751-1756.
 54. Castresana J, Guigo R, Alba MM: **Clustering of genes coding for DNA binding proteins in a region of atypical evolution of the human genome.** *J Mol Evol* 2004, **59(1)**:72-79.
 55. Newman TL, Tuzun E, Morrison VA, Hayden KE, Ventura M, McGrath SD, Rocchi M, Eichler EE: **A genome-wide survey of structural variation between human and chimpanzee.** *Genome Research* 2005, **15(10)**:1344-1356.
 56. Johnson ME, Cheng Z, Morrison VA, Scherer S, Ventura M, Gibbs RA, Green ED, Eichler EE: **Eukaryotic Transposable Elements and Genome Evolution Special Feature: Recurrent duplication-driven transposition of DNA during hominoid evolution.** *Proc Natl Acad Sci U S A* 2006, **103(47)**:17626-17631.
 57. Zody MC, Garber M, Adams DJ, Sharpe T, Harrow J, Lupski JR, Nicholson C, Searle SM, Wilming L, Young SK, Abouelleil A, Allen NR, Bi WM, Bloom T, Borowsky ML, Bugalter BE, Butler J, Chang JL, Chen CK, Cook A, Corum B, Cuomo CA, de Jong PJ, DeCaprio D, Dewar K, FitzGerald M, Gilbert J, Gibson R, Gnerre S, Goldstein S, Grafham DV, Grocock R, Hafez N, Hagopian DS, Hart E, Norman CH, Humphray S, Jaffe DB, Jones M, Kamal M, Khodiyar VK, LaButti K, Laird G, Lehoczyk J, Liu XH, Lokyitsang T, Loveland J, Lui A, Macdonald P, Major JE, Matthews L, Mauceli E, McCarroll SA, Mihalev AH, Mudge J, Nguyen C, Nicol R, O'Leary SB, Osoegawa K, Schwartz DC, Shaw-Smith C, Stankiewicz P, Steward C, Swarbreck D, Venkataraman V, Whittaker CA, Yang XP, Zimmer AR, Bradley A, Hubbard T, Birren BW, Rogers J, Lander ES, Nusbaum C: **DNA sequence of human chromosome 17 and analysis of rearrangement in the human lineage.** *Nature* 2006, **440(7087)**:1045-1049.
 58. Zody M, Garber M, Sharpe T, Young S, Rowen L, O'Neill K, Whittaker C, Kamal M, Chang J, Cuomo C, Dewar K, FitzGerald M, Kodira C, Madan A, Qin S, Yang X, Abbasi N, Abouelleil A, Arachchi H, Baradaran L, Birditt B, Bloom S, Bloom T, Borowsky M, Burke J, Butler J, Cook A, Dearellano K, Decaprio D, Dorris L, Dors M, Eichler E, Engels R, Fahey J, Fleetwood P, Friedman C, Gearin G, Hall J, Hensley G, Johnson E, Jones C, Kamat A, Kaur A, Locke D, Madan A, Munson G, Jaffe D, Lui A, Macdonald P, Mauceli E, Naylor J, Nesbitt R, Nicol R, O'Leary S, Ratcliffe A, Rounsley S, She X, Sneddon K, Stewart S, Sougnez C, Stone S, Topham K, Vincent D, Wang S, Zimmer A, Birren B, Hood L, Lander E, Nusbaum C: **Analysis of the DNA sequence and duplication history of human chromosome 15.** In *Nature Volume 440. Issue 7084 Nature; 2006:671-675.*
 59. Navarro A, Betran E, Barbadilla A, Ruiz A: **Recombination and gene flux caused by gene conversion and crossing over in inversion heterokaryotypes.** *Genetics* 1997, **146(2)**:695-709.
 60. Hellmann I, Ebersberger I, Ptak SE, Paabo S, Przeworski M: **A neutral explanation for the correlation of diversity with recombination rates in humans.** *Am J Hum Genet* 2003, **72(6)**:1527-1535.
 61. Eyrewalker A: **Recombination and Mammalian Genome Evolution.** *P Roy Soc Lond B Bio* 1993, **252(1335)**:237-243.
 62. Hardison RC, Roskin KM, Yang S, Diekhans M, Kent WJ, Weber R, Elnitski L, Li J, O'Connor M, Kolbe D, Schwartz S, Furey TS, Whelan S, Goldman N, Smit A, Miller W, Chiaromonte F, Haussler D: **Covariation in frequencies of substitution, deletion, transposition, and recombination during eutherian evolution.** *Genome Res* 2003, **13(1)**:13-26.
 63. Meunier J, Duret L: **Recombination drives the evolution of GC-content in the human genome.** *Mol Biol Evol* 2004, **21(6)**:984-990.
 64. Myers S, Bottolo L, Freeman C, McVean G, Donnelly P: **A fine-scale map of recombination rates and hotspots across the human genome.** *Science* 2005, **310(5746)**:321-324.
 65. Kong A, Gudbjartsson DF, Sainz J, Jonsson GM, Gudjonsson SA, Richardson B, Sigurdardottir S, Barnard J, Hallbeck B, Masson G, Shlien A, Palsson ST, Frigge ML, Thorgeirsson TE, Gulcher JR, Stefansson K: **A high-resolution recombination map of the human genome.** *Nature Genetics* 2002, **31(3)**:241-247.

66. Ruiz-Herrera A, Garcia F, Giulotto E, Attolini C, Egozcue J, Ponsa M, Garcia M: **Evolutionary breakpoints are co-localized with fragile sites and intrachromosomal telomeric sequences in primates.** *Cytogenet Genome Res* 2005, **108(1-3)**:234-247.
67. Nergadze SG, Rocchi M, Azzalin CM, Mondello C, Giulotto E: **Insertion of telomeric repeats at intrachromosomal break sites during primate evolution.** *Genome Res* 2004, **14(9)**:1704-1710.
68. Murphy WJ, Larkin DM, Everts-van der Wind A, Bourque G, Tesler G, Auvil L, Beever JE, Chowdhary BP, Galibert F, Gatzke L, Hitte C, Meyers SN, Milan D, Ostrander EA, Pape G, Parker HG, Raudsepp T, Rogatcheva MB, Schook LB, Skow LC, Welge M, Womack JE, O'Brien S J, Pevzner PA, Lewin HA: **Dynamics of mammalian chromosome evolution inferred from multispecies comparative maps.** *Science* 2005, **309(5734)**:613-617.
69. Rozen S, Skaletsky H, Marszalek JD, Minx PJ, Cordum HS, Waterston RH, Wilson RK, Page DC: **Abundant gene conversion between arms of palindromes in human and ape Y chromosomes.** *Nature* 2003, **423(6942)**:873-876.
70. Marques-Bonet T, Caceres M, Bertranpetit J, Preuss TM, Thomas JW, Navarro A: **Chromosomal rearrangements and the genomic distribution of gene-expression divergence in humans and chimpanzees.** *Trends in Genetics* 2004, **20(11)**:524-529.
71. Browser UCSCG: **UCSC Genome Browser.** [<http://genome.ucsc.edu/>].
72. Feuk L, MacDonald JR, Tang T, Carson AR, Li M, Rao G, Khaja R, Scherer SW: **Discovery of human inversion polymorphisms by comparative analysis of human and chimpanzee DNA sequence assemblies.** *Plos Genetics* 2005, **1(4)**:489-498.
73. Goidts V, Szamalek JM, Hameister H, Kehrer-Sawatzki H: **Segmental duplication associated with the human-specific inversion of chromosome 18: a further example of the impact of segmental duplications on karyotype and genome evolution in primates.** *Human Genetics* 2004, **115(2)**:116-122.
74. Kehrer-Sawatzki H, Sandig C, Chuzhanova N, Goidts V, Szamalek JM, Tanzer S, Muller S, Platzer M, Cooper DN, Hameister H: **Breakpoint analysis of the pericentric inversion distinguishing human chromosome 4 from the homologous chromosome in the chimpanzee (*Pan troglodytes*).** *Human Mutation* 2005, **25(1)**:45-55.
75. Kehrer-Sawatzki H, Sandig CA, Goidts V, Hameister H: **Breakpoint analysis of the pericentric inversion between chimpanzee chromosome 10 and the homologous chromosome 12 in humans.** *Cytogenetic and Genome Research* 2005, **108(1-3)**:91-97.
76. Kehrer-Sawatzki H, Schreiner B, Tanzer S, Platzer M, Muller S, Hameister H: **Molecular characterization of the pericentric inversion that causes differences between chimpanzee chromosome 19 and human chromosome 17.** *Am J Hum Genet* 2002, **71(2)**:375-388.
77. Kehrer-Sawatzki H, Szamalek JM, Tanzer S, Platzer M, Hameister H: **Molecular characterization of the pericentric inversion of chimpanzee chromosome 11 homologous to human chromosome 9.** *Genomics* 2005, **85(5)**:542-550.
78. Yunis JJ, Prakash O: **The Origin of Man - a Chromosomal Pictorial Legacy.** *Science* 1982, **215(4539)**:1525-1530.
79. **Chimpanzee Segmental Duplication Database** [<http://chimpparalogy.gs.washington.edu/>]
80. **Human Segmental Duplication Database** [<http://humanparalogy.gs.washington.edu/>]
81. Crow JF: **A new study challenges the current belief of a high human male : female mutation ratio.** *Trends in Genetics* 2000, **16(12)**:525-526.
82. Hurst LD, Ellegren H: **Sex biases in the mutation rate.** *Trends in Genetics* 1998, **14(11)**:446-452.
83. Makova KD, Li WH: **Strong male-driven evolution of DNA sequences in humans and apes.** *Nature* 2002, **416(6881)**:624-626.
84. She XW, Jiang ZX, Clark RL, Liu G, Cheng Z, Tuzun E, Church DM, Sutton G, Halpern AL, Eichler EE: **Shotgun sequence assembly and recent segmental duplications within the human genome.** *Nature* 2004, **431(7011)**:927-930.

Publish with **BioMed Central** and every scientist can read your work free of charge

"BioMed Central will be the most significant development for disseminating the results of biomedical research in our lifetime."

Sir Paul Nurse, Cancer Research UK

Your research papers will be:

- available free of charge to the entire biomedical community
- peer reviewed and published immediately upon acceptance
- cited in PubMed and archived on PubMed Central
- yours — you keep the copyright

Submit your manuscript here:
http://www.biomedcentral.com/info/publishing_adv.asp

