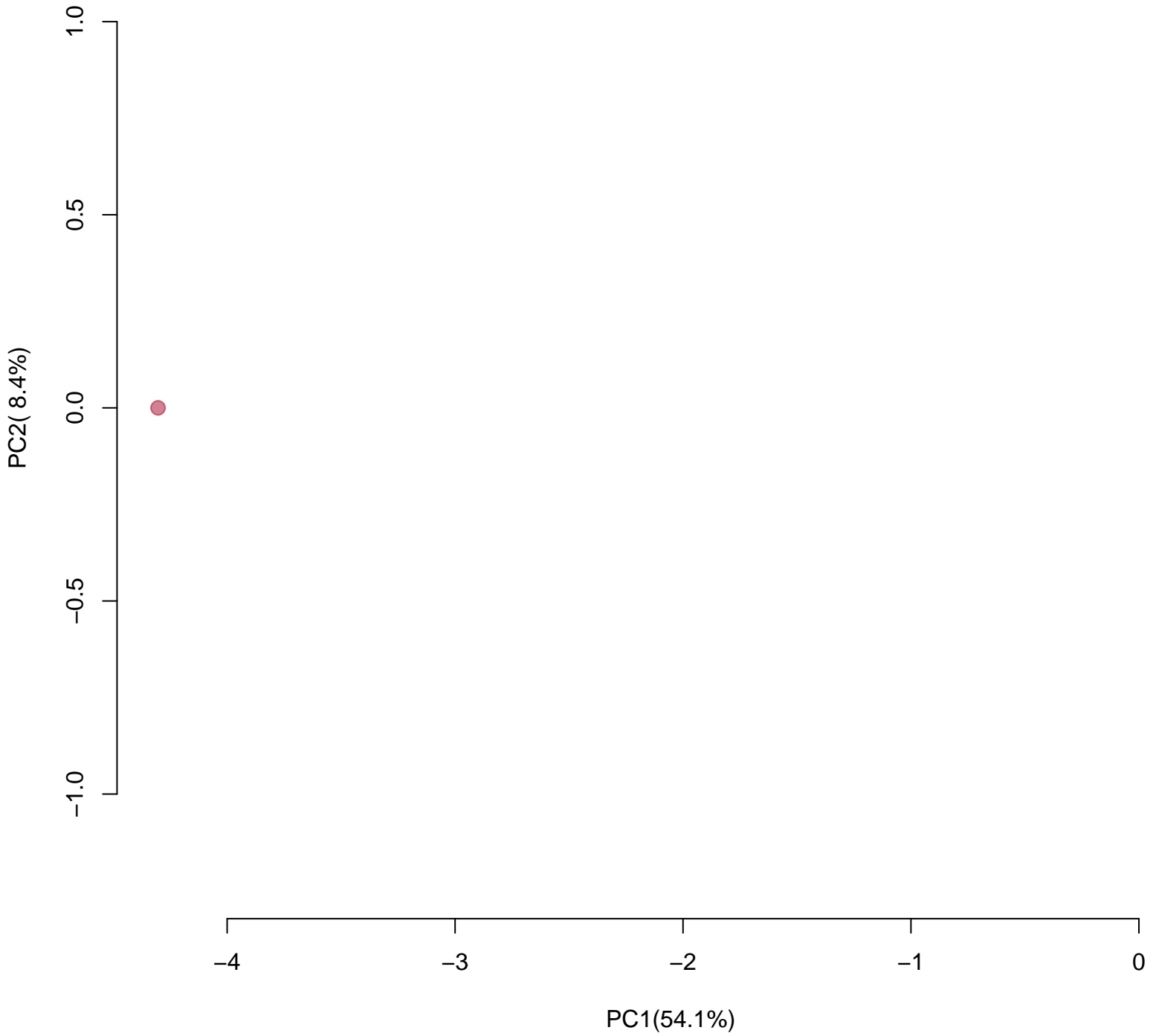
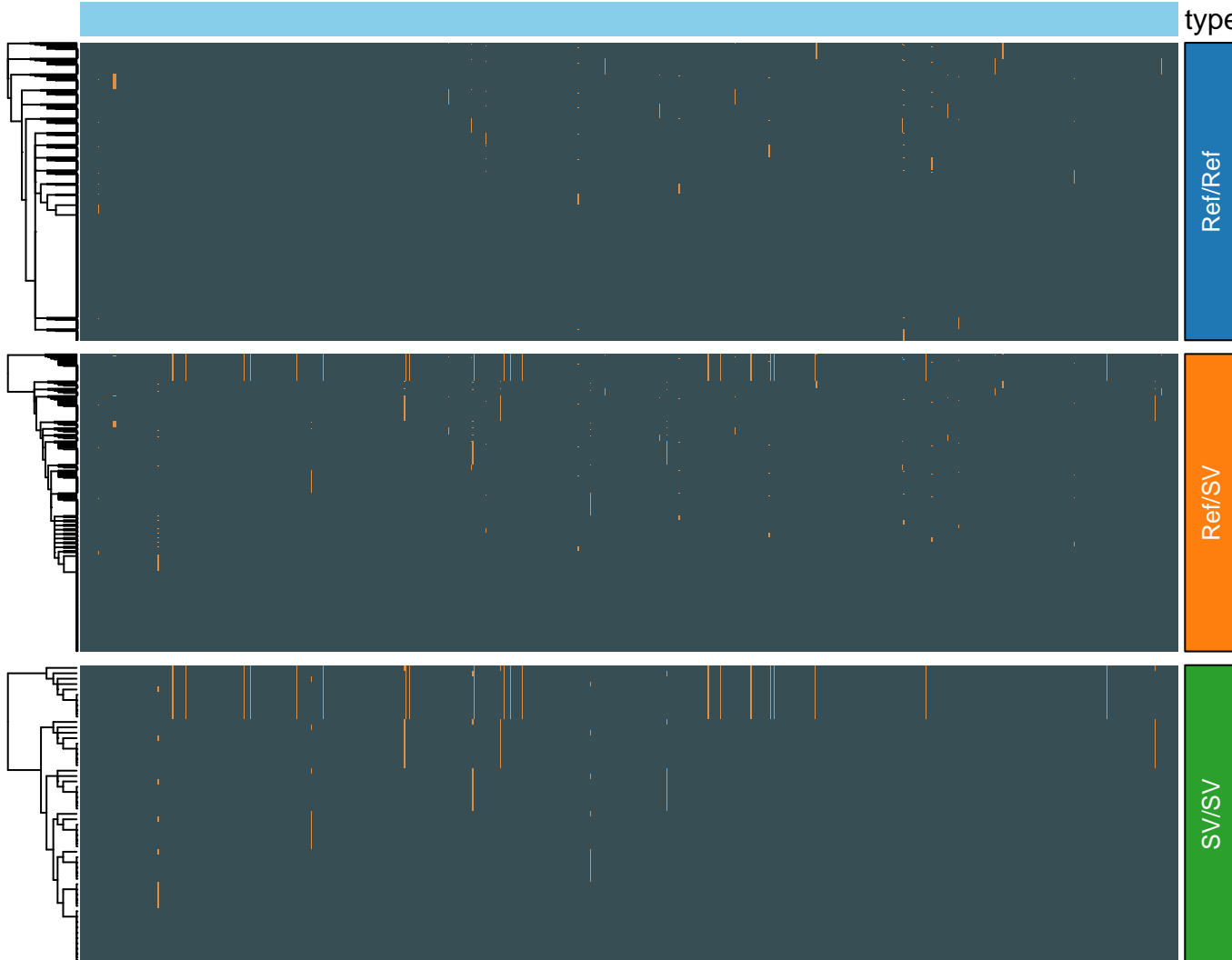


■ AFR ■ AMR ■ EAS ■ EUR ■ SAS



SNV

Haplotype pairs



type

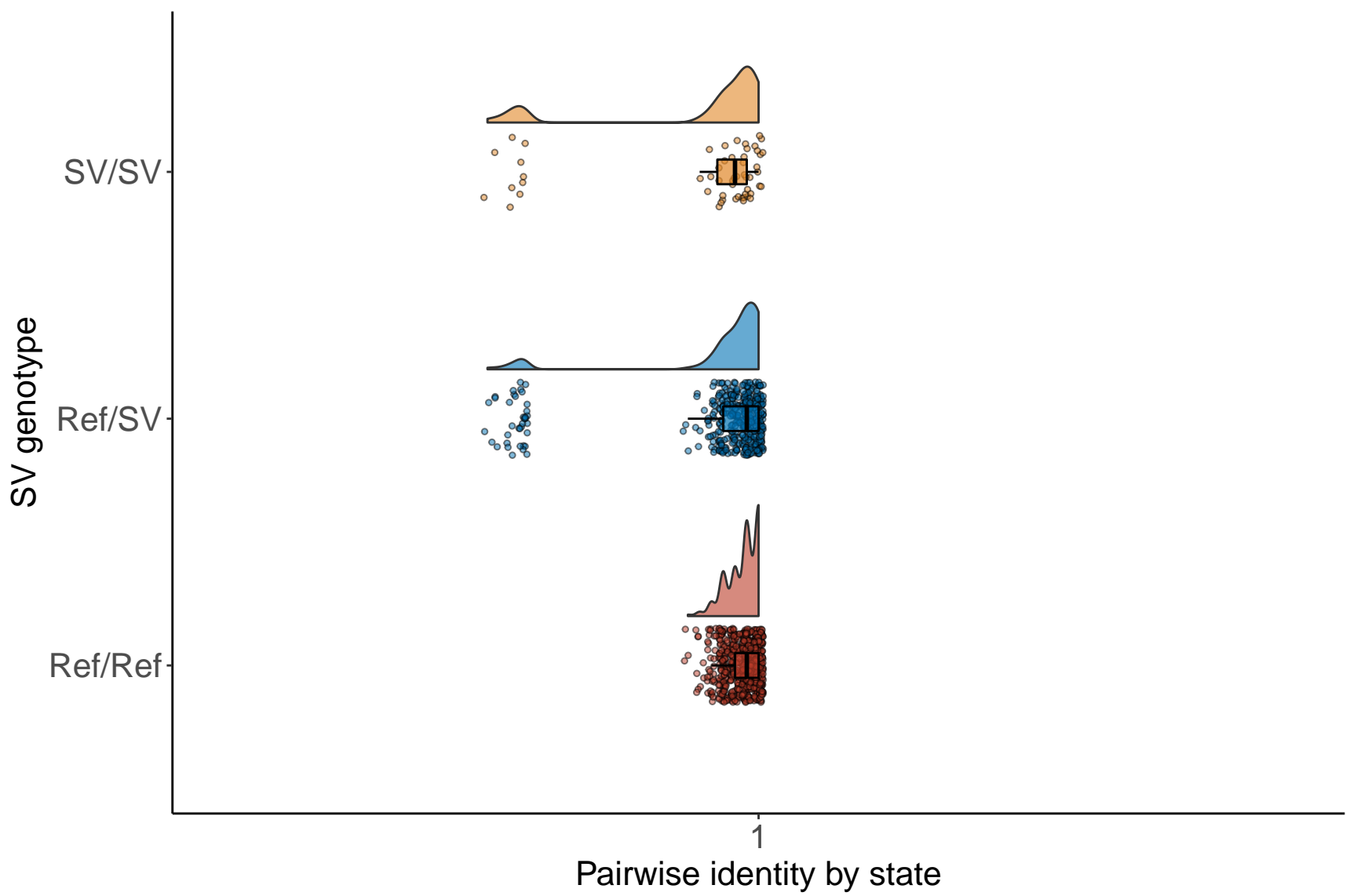
Ref/Ref

Ref/SV

SV/SV

PairwiseComparison

- Match
- Mismatch



1870034-161890814-IGC

FALSE ▲ TRUE

NA Population



AFR



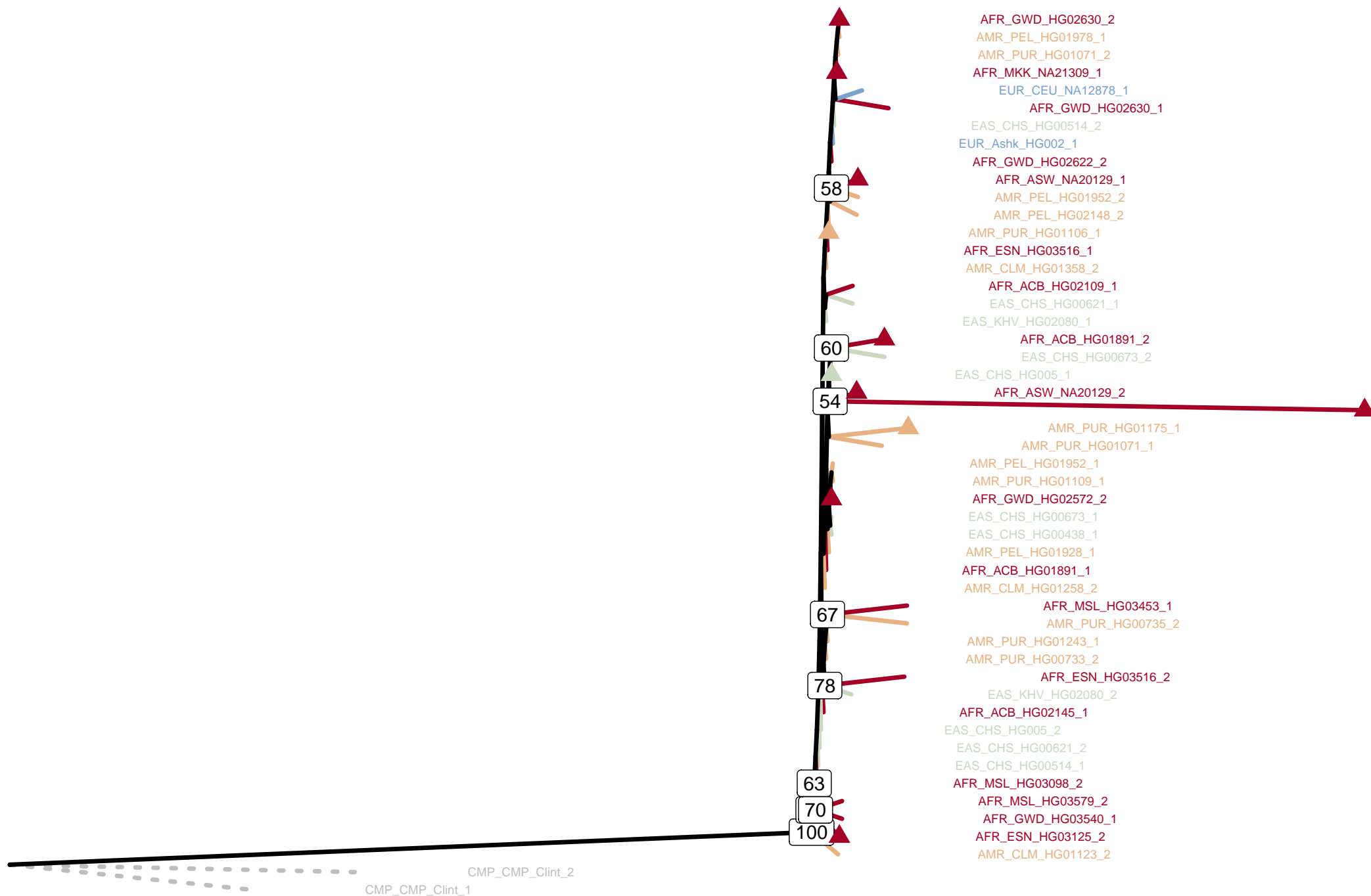
AMR



EAS

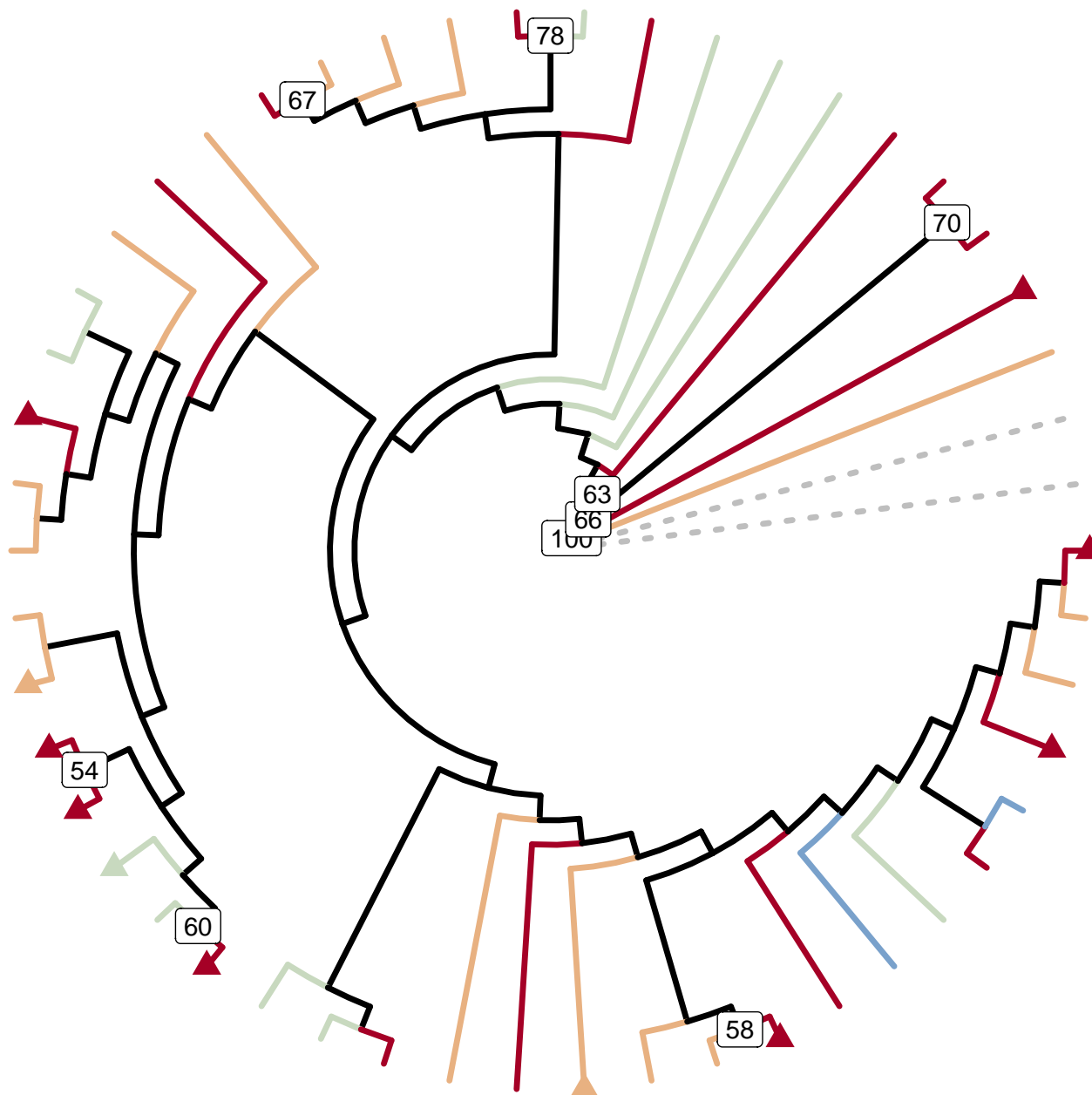


EUR



51870034-161890814-IGC

FALSE ▲ TRUE NA Population ● AFR ● AMR ● EAS ● EUR



161890814-IGC/plot/chr6-161870034-161890814-IGC

● 1

FALSE

▲ TRUE

Population

● #7F8080

●

