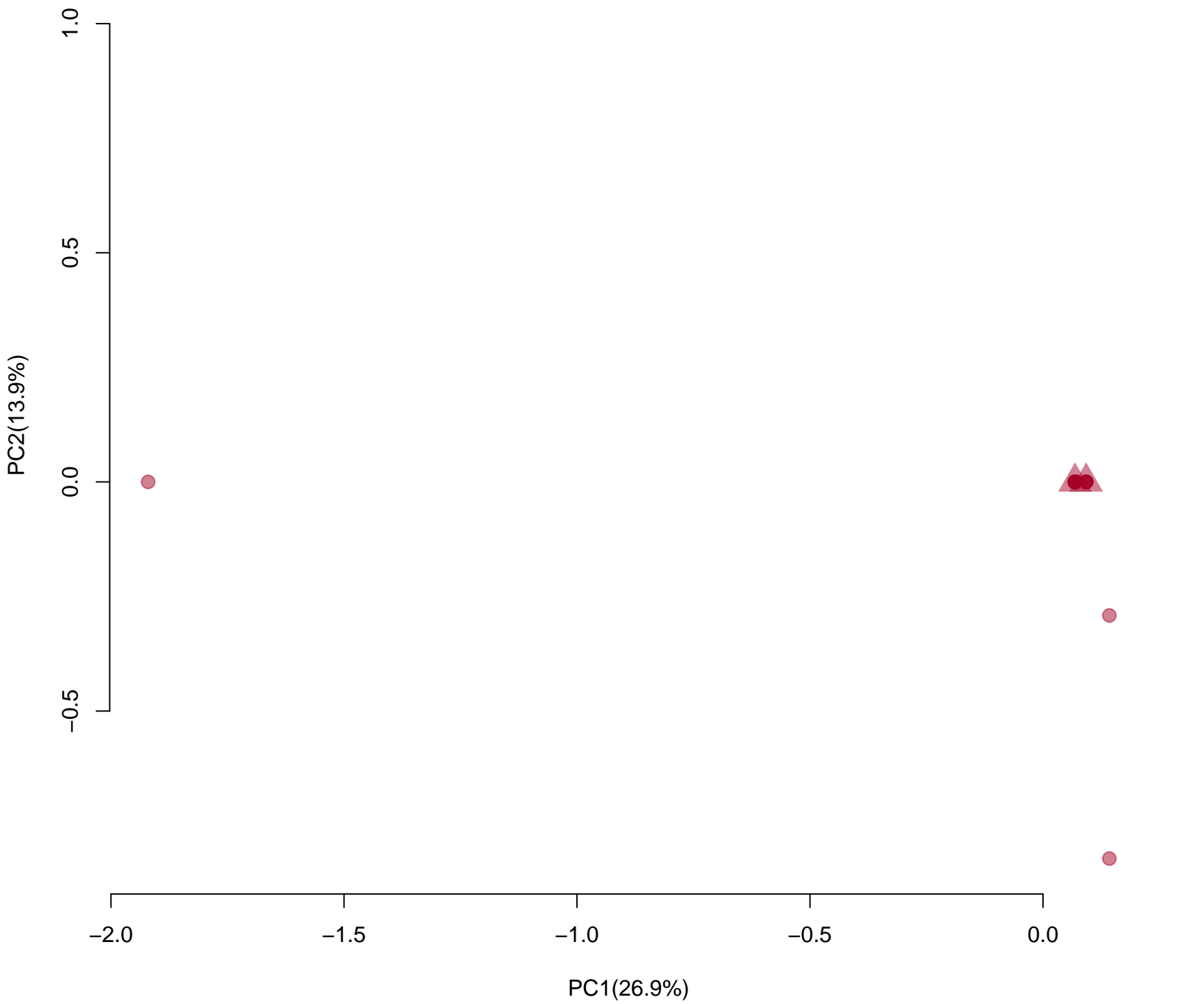


■ AFR ■ AMR ■ EAS ■ EUR ■ SAS



SNV

Haplotype pairs

type

Ref/Ref

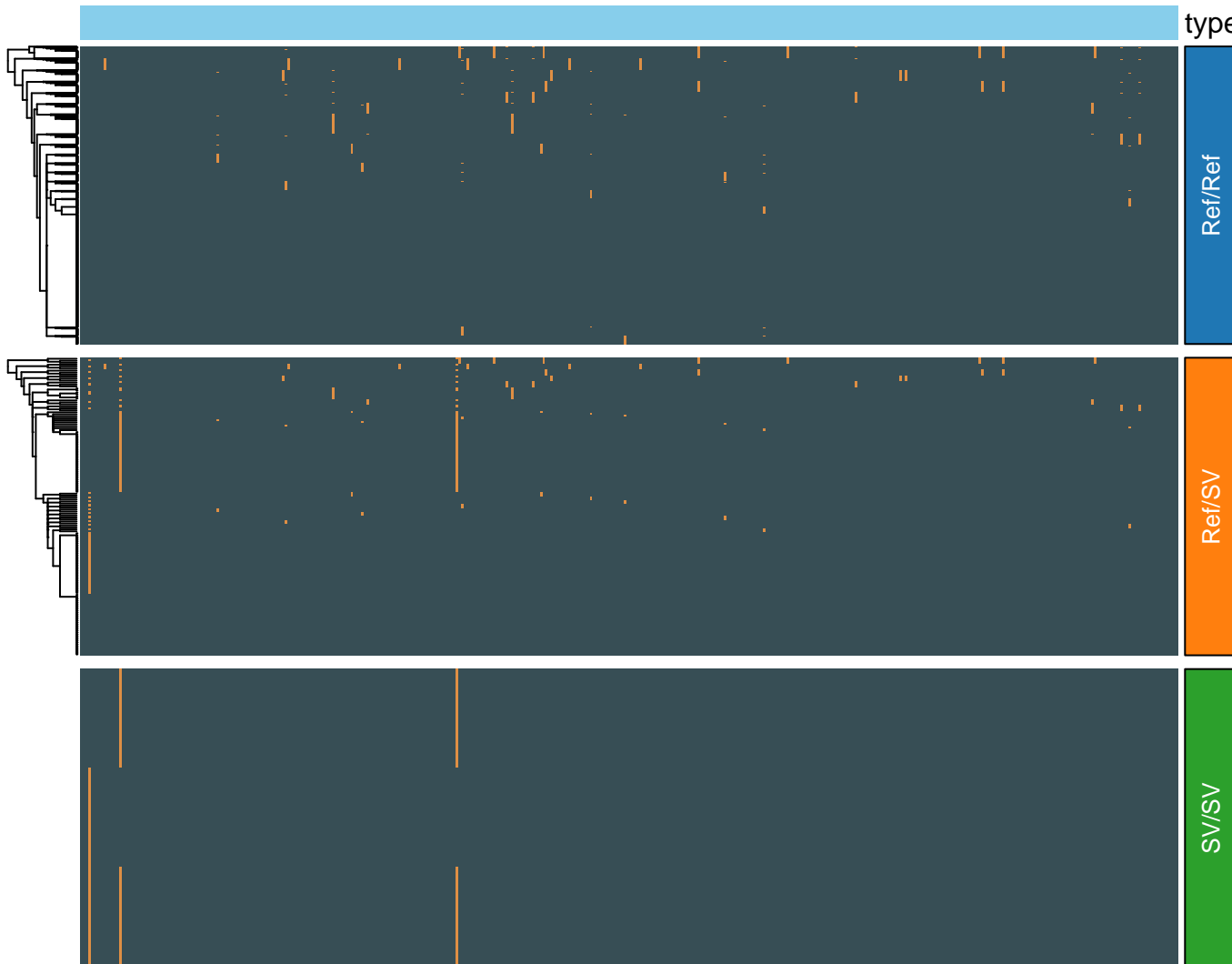
Ref/SV

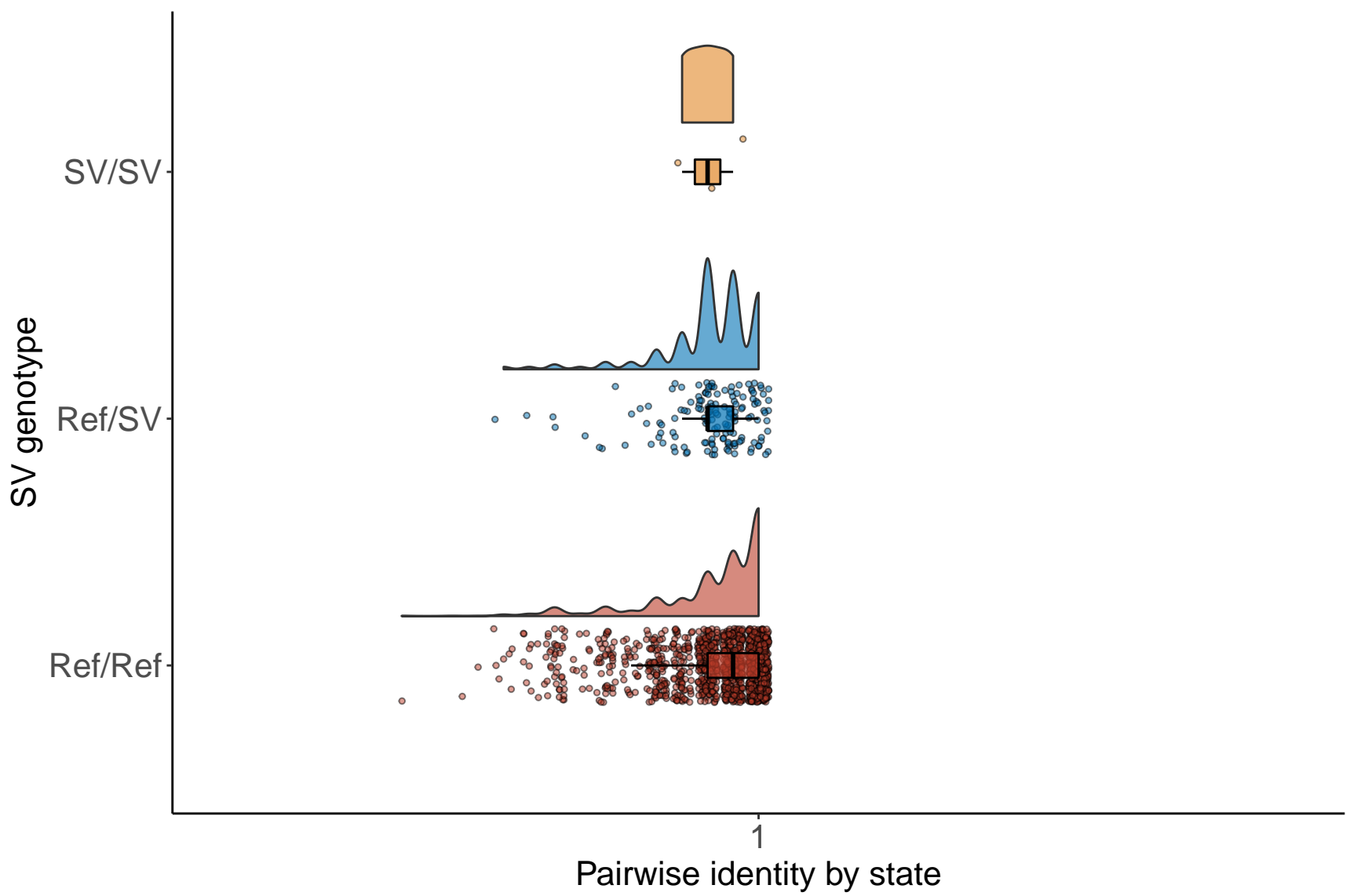
SV/SV

PairwiseComparison

Match

Mismatch







1e-05

52427383-152439219-IGC

FALSE ▲ TRUE

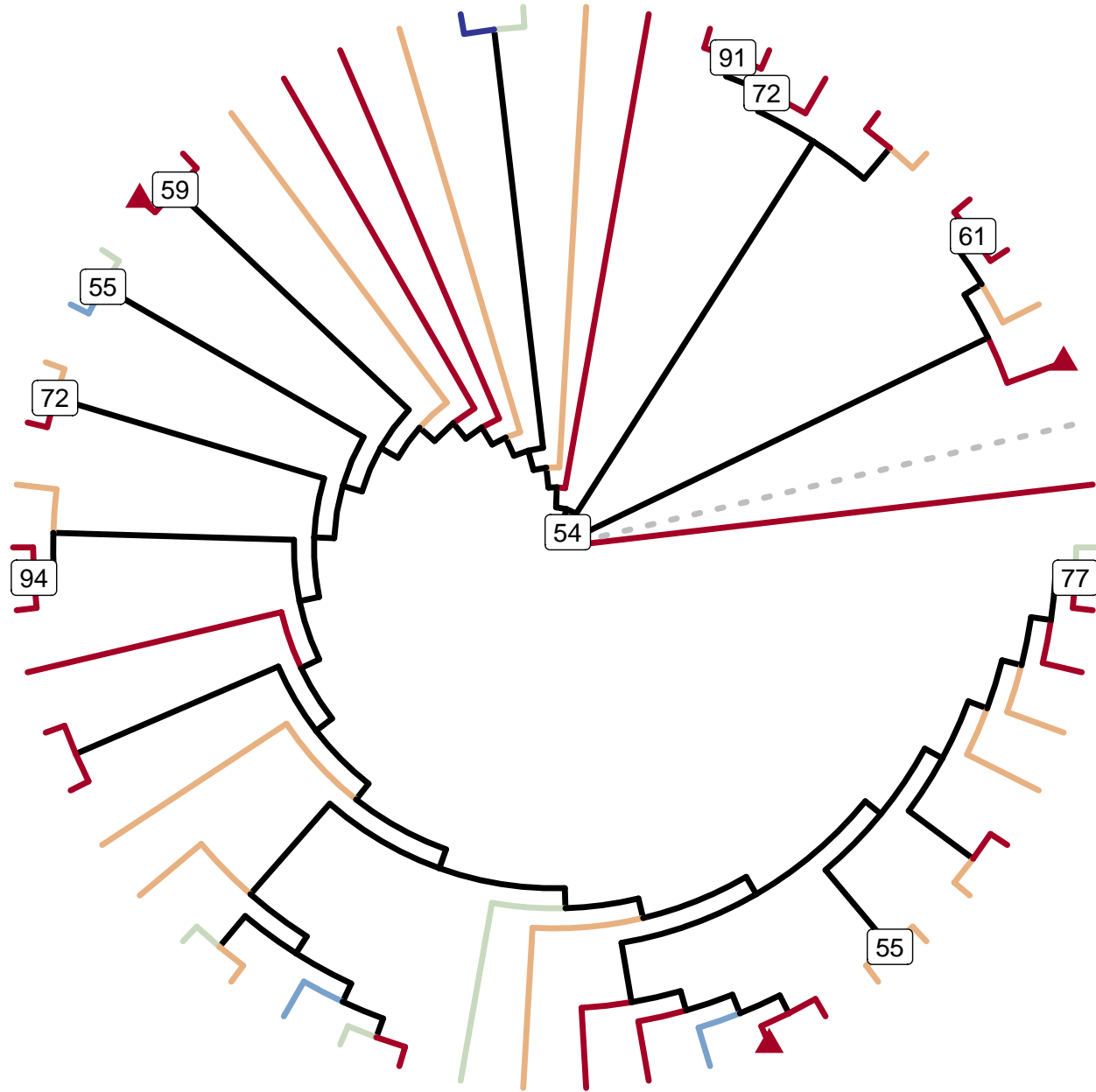
NA Population

● AFR

● AMR

● EAS

● EUR



52439219-IGC/plot/chrX-152427383-152439219-IGC

● 1

FALSE

▲ TRUE

Population

● #7F8080

●

